

Neets Control EU Standard



Small and economical **control system** for
meeting and class rooms

neets
Intuitive Control

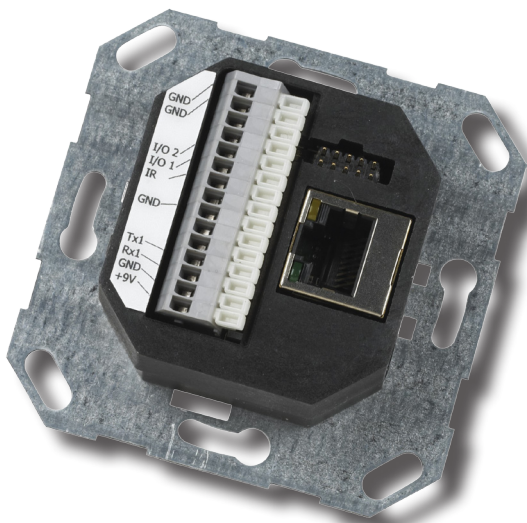
A unique solution

You know the situation. You are about to start an important presentation for a group of customers, and worry about how to manage the advanced audio visual equipment in the meeting room. Don't worry! Neets Control - EU Standard is the solution you need.

With just one button press on the control system, the projector will start and show the source you've picked, the screen will roll down and the lights will dim. You can start your presentation without any frustration - don't worry!



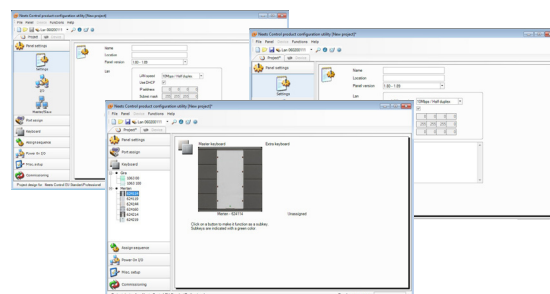
With the Neets Control - EU Standard you get



- High design flexibility
- Same user interface in all rooms
- Compatibility with EU DIN standard
- 1 button press starts it all
- Custom designed labels
- Easy programming
- Easy to operate for the end user, no manual needed
- Central control
- Master / slave function
- Room function control (light, curtains etc.)

Special features

Design the Neets Control - Standard in many different ways with a variety of different frames and keyboards.



Programming of Neets Control - EU Standard is easy and intuitive, through Windows based configuration utility software.

Technical specifications

Highlights/functions

- 1 x RS-232 (Rx1/Tx1)
- 1 x IR (control up to 3 devices)
- 2 x I/O
- 1 X LAN 10/100 Mbit (programming)
- 1 keyboard
- 6-8 buttons
- 1 x IR eye included
- PIR sensor input
- LAN configuration
- Clear LED indication
- Controlled by external infrared remote control
- Master/slave function

Room functions¹

- Room light on/off control
- Screen up/down
- Automatic screen up/down
- Dark room curtains open/shut
- One button screen up/down control

Dimensions:

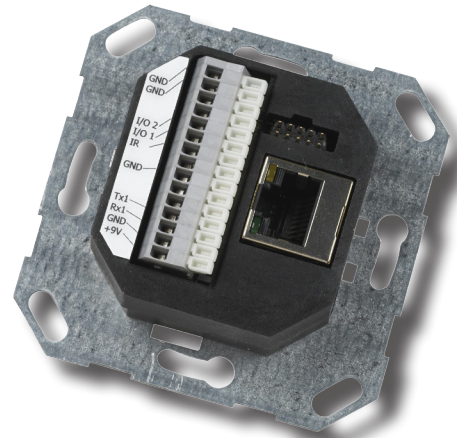
- H: 71mm, W:71mm, D: 25mm (inclusive connector, without frame)

Notes:

¹ Room control functions must use

Neets relay boxes or equal

² Frames and keyboards not included

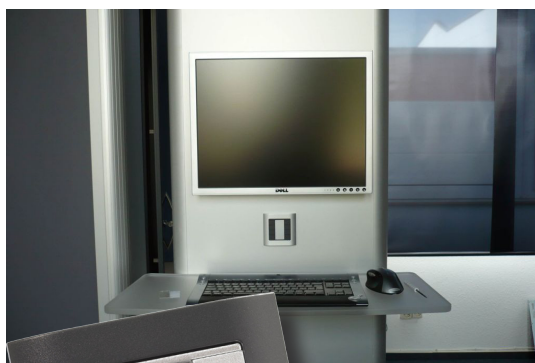


Neets Control - EU Standard back



Neets Control - EU Standard front frame and keyboard attached²

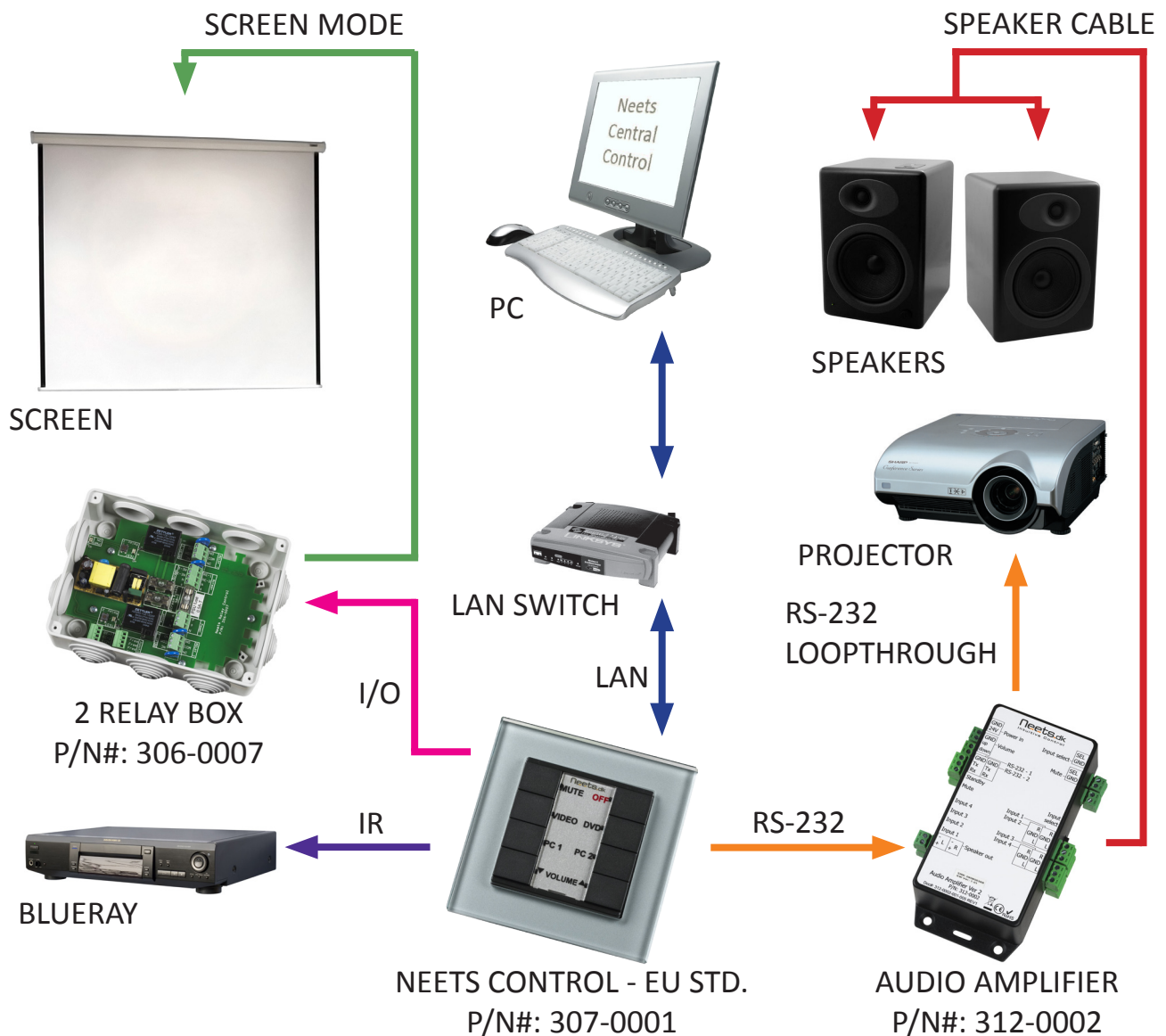
Neets Control - EU Standard in short



Neets Control - EU Standard offers you a lot of flexibility; design and functionality is combined in one product that controls beamer, screen, light, DVD, video, and any other RS-232/Relay/IR controlled devices. Furthermore, you can configure the panel over LAN. The Neets Control - EU Standard is available in many different colour schemes as well as keyboard backlight to meet any request you may have to the individual design of your Neets Control - EU Standard.

The Neets Control - EU Standard is intelligent but at the same time easy to use. It has no complicated submenus or any unnecessary buttons. The system automatically controls all the essential functions. All it takes is one push at a button and you are all set.

How does it connect?



The Neets Control - EU Standard is controlling the blueray via IR. The Neets 2 relay box is controlled from the systems I/O port, controlling the screen up/down from the "screen mode". The Neets Audio Amplifier is controlled from the RS-232 port on the control system. Audio signals from the blueray is controlled via the Neets Audio Amplifier to the speakers. Via LAN the Neets Control - EU Standard is monitored by Neets Central Control.

Neets

Torvet 4 • 8700 Horsens • Denmark • Phone: +45 75 666 099 • E-mail: sales@Neets.dk • www.Neets.dk

Doc.no.# 230-018-03 REV0