

# Neets Control FoXtrot



Small and intuitive **control system** for meeting  
and class rooms

**Neets**  
Intuitive Control

## A unique solution

You know the situation. You are about to give a lecture, and your intention is to use the advanced audio visual equipment available in the class room. You may worry about how to get started without looking like a complete fool. Don't worry! Neets Control - FoXtrot is the solution you need.

With just one button press on the control system, the projector will start and show the source you've picked, the screen will roll down and the lights will dime. You can start your lecture like a pro!!



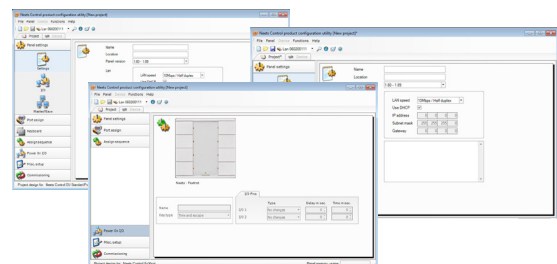
## With the Neets Control - FoXtrot you get



- A small and intuitive control system
- Same user interface in all rooms
- Compatibility with EU DIN standard
- 1 button press starts it all
- Control of all vital functions of a projector installation
- Custom designed labels
- Easy programming
- Easy to operate for the end user no manual needed
- Perfect for class room installation
- Available in two colours; polar white and anthracite

## Special features

**Design** the Neets Control - FoXtrot in many different ways with a variety of different frames.



**Programming** of Neets Control - FoXtrot is easy and intuitive, through Windows based configuration utility software.

## Technical specifications

### Highlights/functions

- 1 x RS-232 (Tx)
- 1 x IR
- 2 x I/O
- 1 keyboard
- 8 buttons
- Clear LED indication
- Onside programming from front
- Custom designed label for buttons
- Intelligent power on function (NO power ON button)
- Audio/Video Mute function
- Volume control
- Prevents power off, but the input selection can still be made
- Automatic power off, if keyboard is not touched in X minutes

### Room functions<sup>1</sup>

- Room light on/off control
- Screen up/down
- Automatic screen up/down

### Dimensions:

- H: 55mm, W:55mm, D: 22mm  
(inclusive connector, without frame)

### Notes:

<sup>1</sup> Room control functions must use  
Neets relay boxes or equal

<sup>2</sup> Frames not included



Neets Control - FoXtrot back



Neets Control - FoXtrot front  
frame attached<sup>2</sup>

## Neets Control - FoXtrot in short

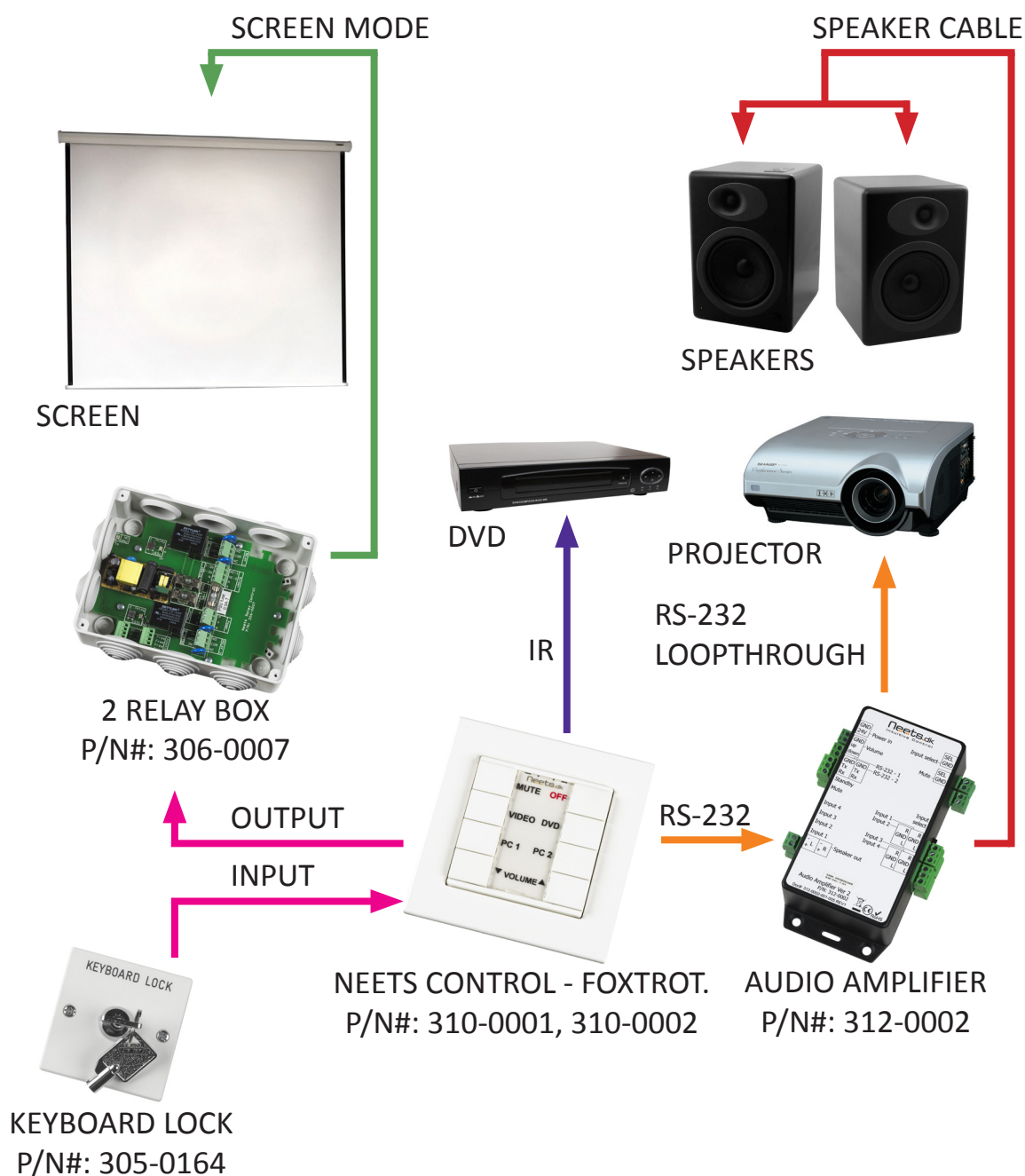


Though small the Neets Control - FoXtrot combines design and functionality in one product that controls both RS-232 and IR. The Neets Control - FoXtrot is available in two keyboard colours - polar white and anthracite. The keyboard labels are easily designed in the configuration software, which makes the Neets Control - FoXtrot fit your project - always.

LED indicates clearly which input source has been chosen, and the LED will blink when the projector is starting up and cooling down, or when A/V Mute is in use, leaving no doubt as to which function is activated.

As you can see the Neets Control - FoXtrot is easy to use and very manageable

## How does it connect?



The Neets Control - FoXtrot is controlling the Audio Amplifier via RS-232. The Audio Amplifier loops the RS-232 signal through to the projector, and is controlling the speakers. The 2 Relay box is controlled from the Neets Control - FoXtrot output, running the screen through the relay box. The systems input is used for a keyboard lock. The DVD player is controlled from the Neets Control - FoXtrot IR port.

# Neets

Torvet 4 • 8700 Horsens • Denmark • Phone: +45 75 666 099 • E-mail: sales@Neets.dk • www.Neets.dk

Doc.no.# 230-018-04 REV1