

Neets Control QueBec



Unique **control system** for class rooms and smaller meeting rooms

A unique solution

You know the situation. You are about to start your lecture, and worry about how to manage the audio visual equipment in the class room. Don't worry! Neets Control - QueBec is the solution you need.

Just start up the PC and the Neets Control - QueBec will detect the signal from the PC, start the projector, roll down the screen and show your power point presentation. You can start your lecture without pressing any other buttons or using complicated remote controls - easy as that!



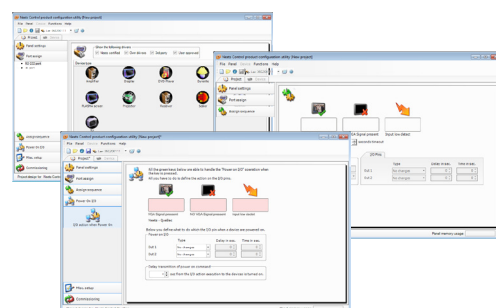
With the Neets Control - QueBec you get



- A straight forward projector control system
- No buttons
- Easy programming
- Easy to operate for the end user, just start the PC
- A system that can be mounted anywhere

Special features

Unique system without buttons. Just start the PC, and the system will detect the VGA signal, starting the projector.



Programming of Neets Control - QueBec is easy and intuitive, through Windows based configuration utility software.

Technical specifications

Highlights/functions

- 1 x RS-232 (Tx)
- 1 x IR
- 2 x Outputs
- 1 x Input (for external key)
- No buttons
- Starts up the projector
- Easy programming by Windows based software
- Fool safe - user cannot do anything wrong
- Intelligent power on and off function
- Input for external key (AV Mute and OFF)

Room functions¹

- Screen up/down
- Dark room curtains open/shut

Dimensions:

- H: 25mm, W:125mm, D: 70mm (inclusive connectors)

Note:

¹ Room control functions must use Neets relay boxes or equal



Neets Control - Quebec in short

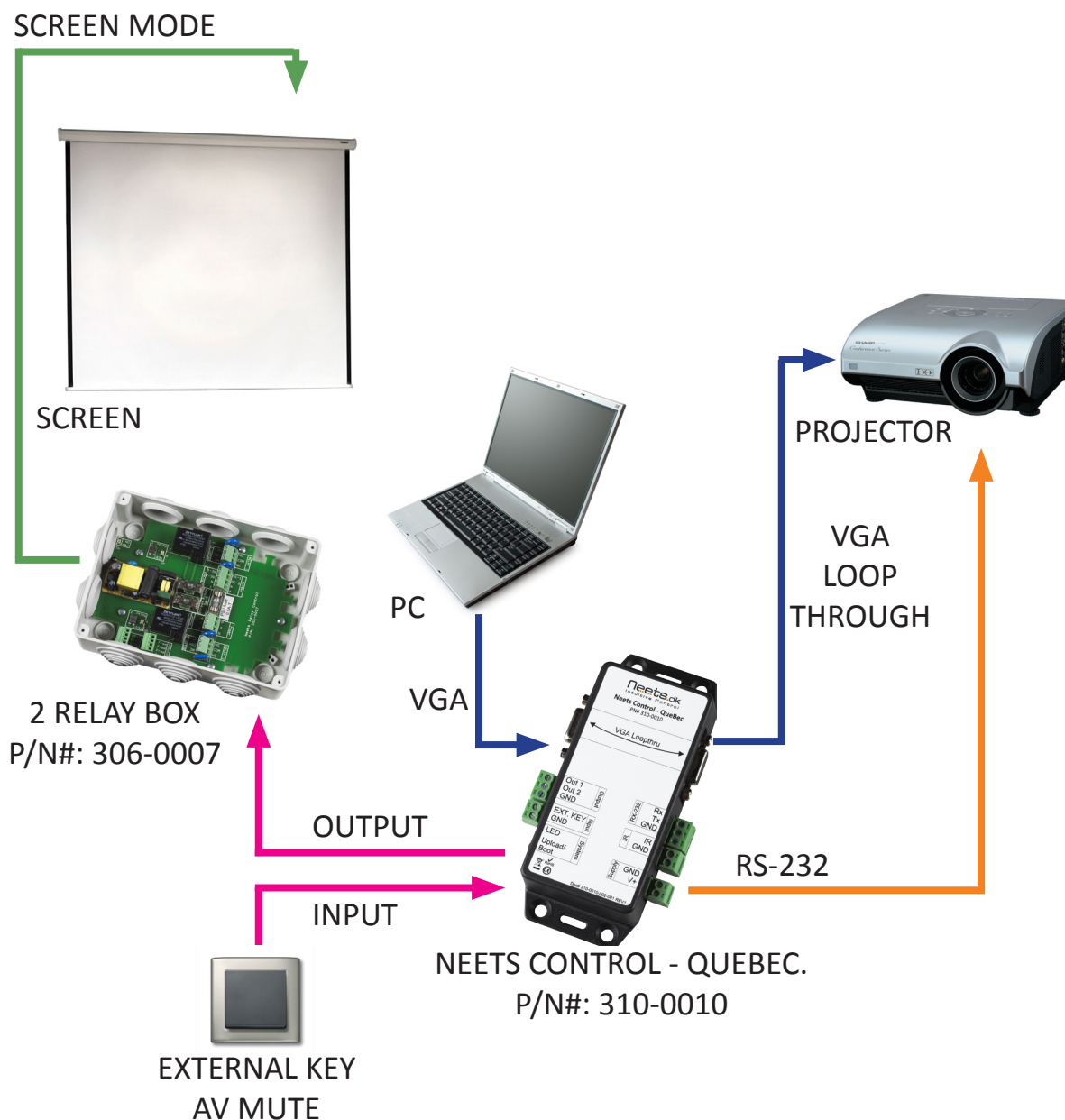


The Neets Control - Quebec is unique in its layout. Unlike the other control systems in Neets product portfolio, the Neets Control - Quebec has no buttons. The system starts automatically when starting the computer.

The system is perfect for a straight forward project where all you need is to control a projector and a screen. The typical project for a class room or smaller meeting room.

Nothing can go wrong! The end user will only have to operate the computer. The system does not control volume up/down or any other source but the source from the PC. If the end user needs to mute the projector, the Neets Control - Quebec has an input which can be used for an external key that can mute the system.

How **does it** connect?



The Neets Control - Quebec detects a VGA signal from the PC and sends the signal through to the projector. Furthermore the Neets Control - Quebec sends a RS-232 signal to the projector. The Neets Control - Quebec controls the 2 Relay box via the systems output. The 2 Relay box is controlling the screen up/down. The systems input is used for an external key for AV mute.

Neets

Torvet 4 • 8700 Horsens • Denmark • Phone: +45 75 666 099 • E-mail: sales@Neets.dk • www.Neets.dk

Doc.no.# 230-018-05 REV1