

EX7155e

DLP® Projector

- Light and ultra portable – only 1.4kg
- Conference room brightness – 3000 ANSI Lumens
- HDMI input – digital clarity
- Native XGA, 2500:1 contrast ratio – sharp images
- Ideal presentation remote with mouse control & laser pointer
- Rapid power on and shutdown – saving you time & money
- Environmentally friendly design <1W standby mode
- DLP® filter-free design – virtually no maintenance

Professional presentations on the move



Light, bright and beautifully designed

Now you can have it all. The EX7155e brings together amazing brightness, portability and cutting-edge design in one compact DLP® projector.

High brightness, 3000 ANSI Lumens; perfect for large rooms, yet it weighs just 1.4kg, making it more than light enough to be taken on the road.

Small doesn't mean that you miss out on specification though, this projector still comes with an HDMI input for digital clarity, filter-free, low maintenance design and our unique Optoma colour and imager guarantees.

STAGGERING BRIGHTNESS

Use in brightly lit locations with the powerful 3000 ANSI Lumens to define the smallest screen details clearly. Your audience will experience the remarkable picture of the EX7155e in almost any lighting situation.

TRUE HDMI

Project crystal clear images using the latest HDMI v1.3 input. Hassle-free projection from a computer/DVD player with a single HDMI cable – no need for separate audio cables.

CARRY BAG

A luxury carry case is provided for you to be able to take the EX7155e anywhere, anytime.



CUSTOMISED START UP SCREEN

First impressions are important so set the company logo as your start up screen to make that lasting impression.



FEATURES

- 5 preset picture modes
- Quick keystone correction
- Easy to use on the table or ceiling mounted
- Fully featured remote with mouse control and laser pointer



Travelling with a lightweight, EX7155e portable DLP® projector is convenient and hassle-free.

AMAZING COLOURS

The EX7155e incorporates BrilliantColor™ technology to produce stunningly bright images with perfectly balanced life-like colours.

COLOUR AND IMAGE PERFORMANCE

Optoma guarantees colour and image quality will remain as new for 5 years

Once you've purchased the EX7155e, Optoma guarantees that the colour and image performance will not fade or degrade for 5 years.



VIRTUALLY MAINTENANCE FREE = LOWER TOTAL COST OF OWNERSHIP

In many cases, Optoma projectors ensure lower cost of ownership, longer life and improved reliability compared to various competing products.

The filter-free projector design means no more regular filter cleaning or replacements, saving you time and money.



ENVIRONMENTALLY FRIENDLY

The EX7155e incorporates energy saving features to conserve power and extend the lamp life:



To achieve the maximum 3000hrs** lamp life time the projector should be operating in STD mode and the shut down timer should be enabled to automatically switch off the projector if it is accidentally left on when no longer required. Enabling the <1W Standby mode will ensure the minimum energy consumption when the projector is not being used.



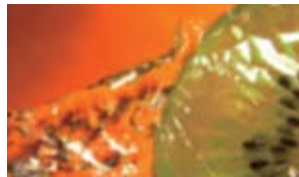
It takes less than 10 seconds for the projector to power up and shutdown, saving both time and energy.

Image and colour enhancement technologies

**WITH
2500:1 contrast ratio**



**WITHOUT
400:1 contrast ratio**



BrilliantColor™ Technology

Advanced colour processing for bright, vivid, life-like colour.
*Simulated Images



EX7155E SPECIFICATIONS

Native Resolution	XGA 1024 x 768
Compressed Resolution	up to UXGA (1600 x 1200)
Brightness	3000 ANSI Lumens
Contrast	2500:1
Noise Level (STD mode)	33dB
Lamp Life**	3000/2000 (STD/BRIGHT mode)
Display Technology	Single 0.55" XGA type X DMD chip DLP® Technology by Texas Instruments
Weight / Dimensions (W x D x H)	1.4 kg / 220 x 178 x 71
Remote Control	Full Function Remote Mouse with Laser and Direct Source selecting
INPUTS:	HDMI (HDCP) - Audio Supported 15 Pin D-Sub VGA (SCART & Component via adaptor) S-Video 4 Pin Mini Din Composite RCA 3.5mm Stereo Jack - Audio Mini Jack USB (remote mouse)
Audio	1 x 1W Speaker
Aspect Ratio	4:3 Native, 16:9 Compatible
Keystone Correction	± 30° Vertical
On Screen Display	17 Languages: English, German, French, Italian, Spanish, Portuguese, Polish, Dutch, Russian, Finnish, Swedish, Greek, Norwegian/Danish, Hungarian, Czech, Turkish & Arabic
Video Compatibility	PAL SECAM 576i/p, NTSC 480i/p, HD 720p/1080i
Uniformity	80%
Displayable Colours	134.2 Million
Projection Lens	F=2.55 ~ 2.72, f=21.3 ~ 24.5mm, 1.15x Manual Focus
Throw Ratio	1.8 ~ 2.2:1 (Projection Distance:Image Width)
Projection Distance	1.2 - 12m
Image Size	0.68 - 7.9m (26.87" - 311.10") Diagonal 4:3
Horizontal / Vertical Scan Rate	15 - 91.4kHz / 43 - 87Hz
Lamp Type	220W Lamp
Power Supply	100-240V, 50-60Hz with PFC Power Supply
Power Consumption	280W BRIGHT mode < 1W Standby mode 230W STD mode < 1W Standby mode
Operating Conditions	Operating: 5 - 40°C, 80% Humidity (Max), 3000m Altitude (Max)
Security	One Kensington Lock Port, Password Protection
Standard Accessories	Lens Cover, AC Power Cord, VGA Cable, USB Cable, Composite Video Cable, Full Function Remote, Batteries x 2, Soft Carry Bag, Quick Start Guide, CD User Manual, Warranty, WEEE Card
RoHS	Compliant
Lamp Warranty	6 months or 1000 hours - whichever comes sooner
Warranty	Warranty may vary by country. Please see www.optomaeurope.com or ask your local supplier for details
Colour Guarantee*	5 Years
Imager Guarantee***	5 Years

EASY TO USE REMOTE CONTROL

EX7155e Remote Control

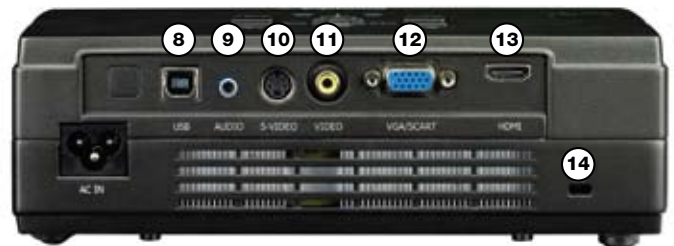
- 1 Laser
- 2 Remote Mouse
- 3 Vertical Keystone Correction
- 4 Volume Control
- 5 Brightness Adjustment
- 6 AV Mute
- 7 Direct Input Source Selection



EX7155e Connections

- 8 USB (remote mouse)
- 9 Audio In
- 10 S-Video
- 11 Composite
- 12 VGA In - Component & SCART via adaptor
- 13 HDMI (audio supported)
- 14 Kensington™ Lock

Exceptional Connectivity / Multiple Terminals



Easy to use remote with buttons to change the input sources



EX7155e Projection Distance 1.2 - 12m (4:3 Aspect Ratio)							
Projection Distance (m)	Max. Horizontal Image Size (m)	Min. Horizontal Image Size (m)	Max. Screen Height (m)	Min. Screen Height (m)	Max Diagonal Image Size (m)	Max Diagonal Image Size (inch)	Max. Image Offset (m)
1.20	0.63	0.55	0.47	0.41	0.79	31.11	0.13
2.00	1.05	0.91	0.79	0.68	1.32	51.85	0.22
2.50	1.32	1.14	0.99	0.85	1.65	64.81	0.28
3.00	1.58	1.36	1.19	1.03	1.98	77.77	0.33
4.00	2.11	1.82	1.58	1.37	2.63	103.70	0.44
5.00	2.63	2.27	1.98	1.71	3.29	129.62	0.55
6.00	3.16	2.73	2.37	2.05	3.95	155.55	0.66
7.00	3.68	3.18	2.77	2.39	4.61	181.47	0.78
8.00	4.21	3.64	3.17	2.73	5.27	207.40	0.89
9.00	4.74	4.09	3.56	3.08	5.93	233.32	1.00
10.00	5.26	4.55	3.96	3.42	6.58	259.25	1.11
11.00	5.79	5.00	4.35	3.76	7.24	285.17	1.22
12.00	6.32	5.45	4.75	4.10	7.90	311.10	1.33

For guide purposes only

EX7155e is capable of 16:9 aspect ratio projection. When projecting a 16:9 image the image sizes, screen height and offset information will differ from the above.

Optoma Europe Ltd.
42 Caxton Way, Watford Business Park, Watford, Hertfordshire, UK. WD18 8QZ
www.optoma.eu

Panoview
Optoma recommended Screens
www.panoview.eu



*Optoma guarantees that in normal use, Optoma DLP® colour quality will be indistinguishable from when new. Exclusions: (1) Guarantee is voided if the projector is subject to damage through misuse. (2) Guarantee may be void in industrial or commercial entertainment environments where dust or smoke is excessive (3) Guarantee will not apply if lamp brightness is below 50% due to wear or if the projector is not working due to other faults. (4) Over time worn lamps within all projector types will show a slight colour variance. **Typical lamp life achieved through testing. Will vary according to operational use and environment conditions. *** Optoma guarantees that in normal use, the DLP® imager will retain image quality for at least 5 years and provide consistent pixel performance. Exclusions: (1) Guarantee is voided if the projector is subject to damage through misuse. (2) Guarantee may be void in industrial or commercial environments where dust or smoke is excessive. Copyright © 2010, Optoma Europe Ltd. All other product names and company names used herein are for identification purposes only and may be trademarks or registered trademarks of their respective owners. Errors and omissions excepted, all specifications are subject to change without notice. DLP®, BrilliantColor™ and the DLP logo are registered trademarks of Texas Instruments.