

Quick and Easy!

Simply Plug the Wireless Stick into a PC and Start Projecting!



3 Easy Steps to Fast Wireless Projection

STEP 1 Plug the ET-UW100 into a computer.

Plug the ET-UW100 into the USB terminal of your computer.

STEP 2 Select the projector to connect to.

Name	ID
1) Name0024	Proj0024
2) Name0024	Proj0024
3) Name0423	Proj0423
4) Name0421	Proj0421

Select the projector that you want to use from the automatically displayed list.

STEP 3 Start projecting.

Press the Live button to start wireless projection.

Projection starts.

* The screen images shown here are examples of Windows.

It's easy, fast and versatile!

Simply plug the ET-UW100 into the USB terminal. There's no need to install any software.

The built-in application software will automatically activate when you plug the ET-UW100 into the USB terminal. At the same time, it will detect the wireless ready Panasonic projectors that you can connect to and display them on the selection screen, for fast and easy wireless connection.

* For certain computer environments, it is necessary to manually activate the application software. Infrastructure mode is not supported.

Fast picture appearance.

It only takes about 10 seconds* for the picture to appear once you have selected the projector to connect to and pressed the Live button. This reduces the bothersome waiting time for projection to begin, and increases operating comfort.

* If a program is executing in the background (e.g., virus check program), it might take more time.

Compatible with both Mac and Windows.

The ET-UW100 is compatible with computers running various Windows operating systems (Windows® XP, Windows Vista®, Windows® 7), and Mac OS X v10.6/v10.7.*¹ Because there is no installation required, you also don't have to worry about security software interrupting and disabling the operation. And because both administrator and user privileges are supported,*² you can easily use it on shared computers.

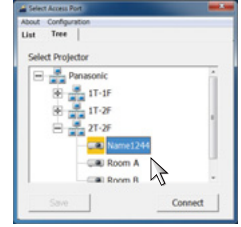
*¹ For details on OS compatibility, check the system requirements below.

*² Only administrator privileges are supported with Windows XP. User privileges are not supported.

Useful Features

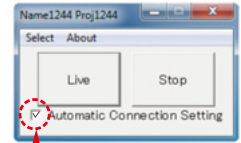
Tree display lets you easily search among multiple projectors.

When multiple projectors are installed throughout the building, they can be registered in a tree-shaped hierarchy for quick and easy displaying. For example, by registering wireless projectors by room or floor, you can quickly find the one you want to connect to.



After you make the initial settings once, future connections are automatic.

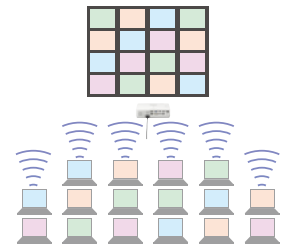
If you frequently use a certain projector, you can set it to automatically connect as soon as you insert the ET-UW100. This eliminates the hassle of having to choose the projector each time, for even speedier projection.



Just insert a check mark for automatic connection.

Wireless projection from multiple PCs with 16-screen index style.

When the projector is set to "16-screen index style," you can connect up to 16 computers to one projector, and simultaneously display all 16 computer screens. You can also temporarily switch over one of these screens to a full screen display.



Compatible Projectors



PT-DZ570* 4,000 lm WUXGA

PT-FW430* 3,500 lm WXGA

PT-DW530* 4,000 lm WXGA

PT-FX400* 4,000 lm XGA

PT-DX500* 4,500 lm XGA



PT-VW435N 4,300 lm WXGA

PT-VX400NT 4,000 lm XGA

PT-VX505N 5,000 lm XGA

Other Compatible Models

PT-FW300NT, PT-F300NT, PT-F200NT, PT-FW100NT, PT-F100NT, PT-LB90NT, PT-LW80NT, PT-LB80NT, PT-LB75NT, PT-LB60NT, PT-LB55NT, PT-LB50NT, PT-LB51NT

* With the ET-WM200 mounted.

Specifications

Model Number	ET-UW100
Dimensions (W x H x D)	36 x 10 x 93 mm (1-3/7" x 2/5" x 3-2/3") (Exclude protective cap)
Weight	Approx. 20 g (Approx. 0.04 lb)
Operating Temperature	41 °F – 95 °F (5 °C – 35 °C)
Operating Humidity	20-80% (No condensation)

System Requirements

Interface	USB 2.0 (Except USB hub ports)	
OS	Microsoft®	Windows® XP Professional 32 bit SP2/SP3, Home Edition 32 bit SP2/SP3
		Windows Vista® Ultimate 32 bit/64 bit SP2 or earlier, Business 32 bit/64 bit SP2 or earlier, Home Premium 32 bit/64 bit SP2 or earlier, Home Basic 32 bit/64 bit SP2 or earlier
		Windows® 7 Ultimate 32 bit/64 bit SP1 or earlier, Professional 32 bit/64 bit SP1 or earlier, Home Premium 32 bit/64 bit SP1 or earlier
Apple	Mac OS X	v10.6/v10.7
	CPU	Windows®
Macintosh		A CPU with at least the minimum specifications to run the above OS.
Memory	Windows®	Memory with at least the minimum specifications to run the above OS. However, in the case of Windows XP, at least 256 MB.
	Macintosh	Memory with at least the minimum specifications to run the above OS.
Color Quality	32 bit	
Screen Resolution	Up to 2,048 x 1,536 dots	

Note: The ET-UW100 is available in the following countries and regions as of June 2012. North America, England, Germany, France, Spain, Italy, Belgium, Austria, Sweden, Norway, Denmark, Switzerland, Holland, Finland, Portugal, Greece, and Japan.



Weights and dimensions shown are approximate. Specifications are subject to change without notice. This product may be subject to export regulations. Intel and Pentium are trademarks or registered trademarks of Intel Corporation or its subsidiaries in the United States and other countries. Windows Vista and Windows are either registered trademarks or trademarks of Microsoft Corp. in the United States and/or other countries. Mac and Mac OS are trademarks of Apple Inc., registered in the U.S. and other countries. All other trademarks are the property of their respective trademark owners. Projection images simulated.

For more information about Panasonic projectors, please visit
 Projector Global Web Site – panasonic.net/avc/projector
 Facebook – www.facebook.com/panasonicprojector
 YouTube – www.youtube.com/user/PanasonicProjector