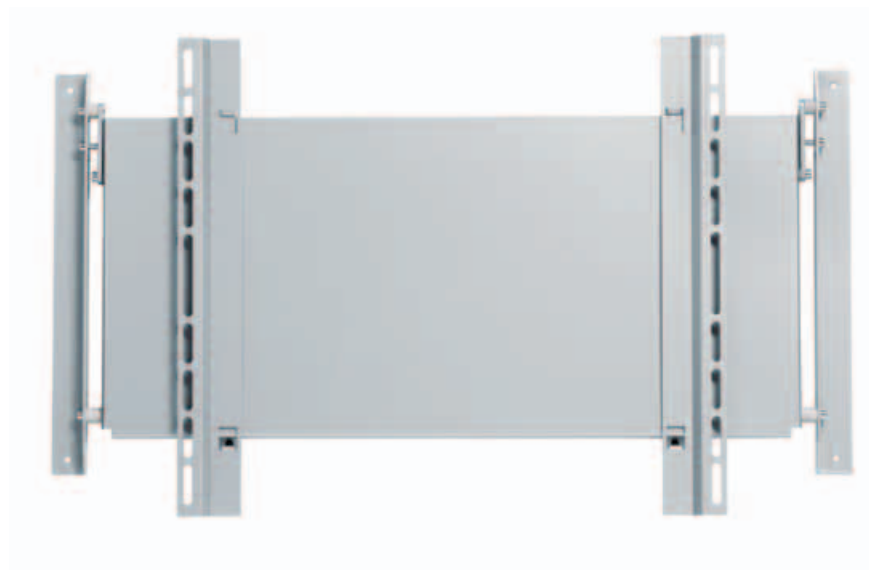


FUNC FLATSCREEN WH T



Are you looking for a new angle? Look no further. The Func Flat-screen WH T is a wall-mounted bracket for heavier screens with a tilt function. It can carry up to 100 kg. It is a very strong and reliable construction that has been tested by the Royal Swedish Institute of Technology. It can be tilted 10 degrees forward allowing you the perfect view. The Func FlatScreen WH T is very easy to mount. (But you will need an extra hand while lifting the screen.)

- | | | | |
|--|--|--|--------------------------------|
| <input type="radio"/> Ceiling | <input checked="" type="radio"/> Heavy weight | <input type="radio"/> Fixed | <input type="radio"/> Variable |
| <input checked="" type="radio"/> Wall | <input type="radio"/> Middle weight | <input type="radio"/> Swivel | <input type="radio"/> UniSlide |
| <input type="radio"/> Floor | <input type="radio"/> Light weight | <input checked="" type="radio"/> Tilt | <input type="radio"/> Hidden |
| <input type="radio"/> Table | | <input type="radio"/> 3D | <input type="radio"/> Double |
| | | <input type="radio"/> Mobile | |

FUNC FLATSCREEN WH T

INFO

- Color: Silver or black.
- Max load: 100 kg
- Weight: 8 kg
- Max size of screen (hole pattern): 800 mm (W) and 500 mm (H).
- Tilt: The screen can be tilted 0-10°.
- Size (bracket, WxHxD): 770x390x40 mm
- Size (threaded holes): M4, M5, M6, M8

ART. NO

PL020020
PL020021

DESCRIPTION

Func Flatscreen WH T Black
Func Flatscreen WH T Silver

UNIVERSAL, NO EXTRA UNISLIDE IS NEEDED

VESA STANDARD: 200x200/400x200/400x400/600x400/800x400

AND SCREENS WITH MAX HOLE PATTERN: 800x500 mm

