

# FUNC MOUNTY



Mounting a large screen? No big deal!

Are you planning on mounting one or several really large screens?

This universal wall bracket makes it easy to mount securely screens of approximate dimension 70-82". The screen can be locked with the accompanying locking pin or with a padlock (not included). Can be adjusted both vertically and depthwise. Supplied in a single package.

# FUNC MOUNTY

## INFO

- Finish: aluminium/black.
- Maximum load: 150 kg
- Recommended screen size: 70-82"
- Size (bracket, B x H x D): 1000 x 953 x 47 mm
- Distance from wall to rear of screen: 47 mm
- Can be locked with the accompanying locking pin or with a padlock (not included) to increase personal safety and security from theft.
- The complete solution delivered in one package.

Suitable for VESA standards: 300-900 mm vertically and 300-900 mm horizontally.

## ART. NO

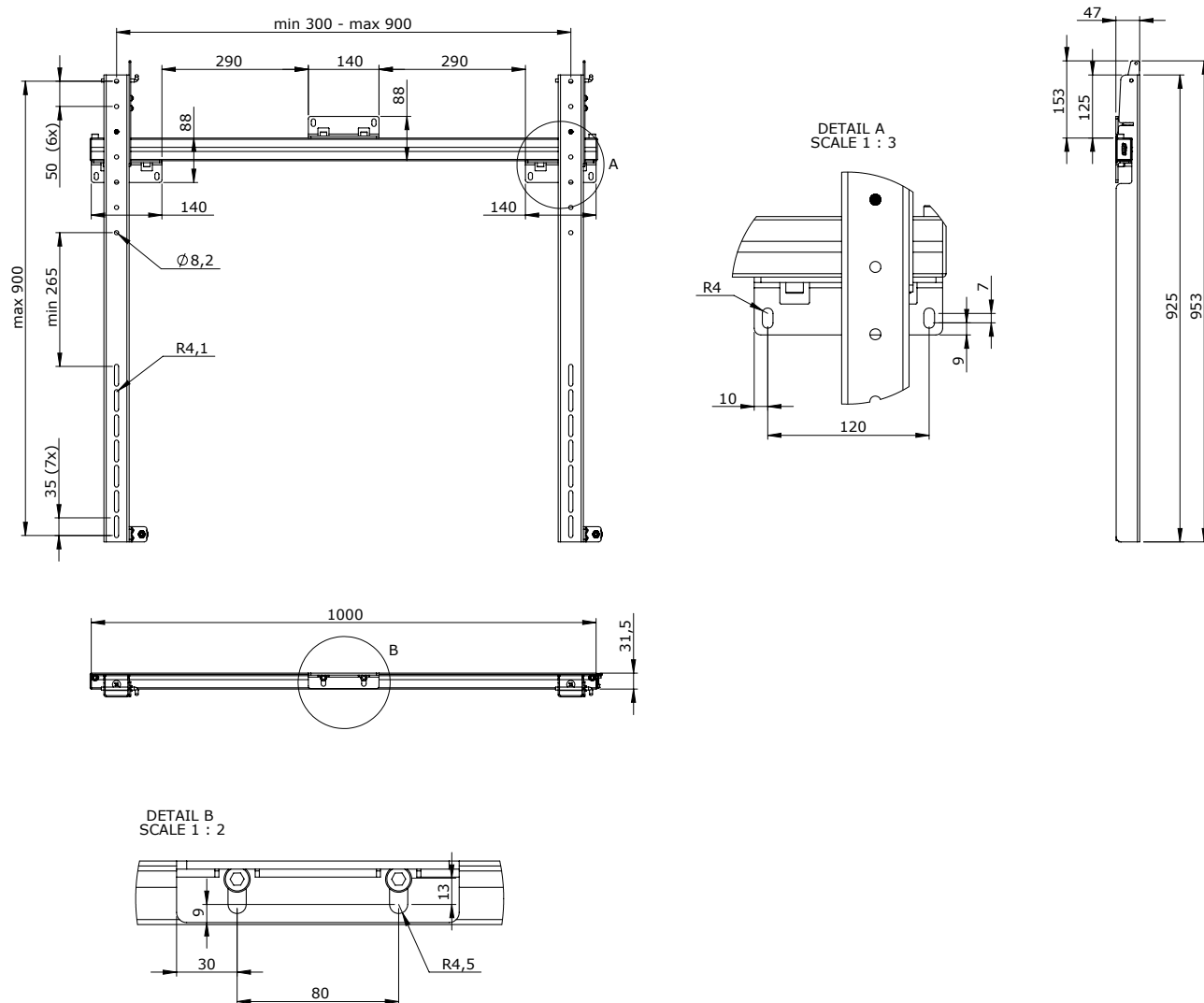
PW010010

### DESCRIPTION

Func Mouny

**Simple ordering – one package and one article number for each screen!**

A single article number covers everything needed to order one module (containing equipment for one screen).



[www.SmartMediaSolutions.se](http://www.SmartMediaSolutions.se)