



REMOTE CONTROL

Full-feature remote control is included with receivers positioned on the front for normal use, and on the rear for integration with a control system such as the Techconnect Control².

LED DISPLAY

Clear display and a simple soft-control interface which gives instant access to controls. Flexible positioning of the control interface makes this easier to install and use than powered speakers.

INPUTS FRONT & REAR

Two Inputs are wired into the rear via phoenix connectors. Input 1 is duplicated on the front panel with a minijack connector for convenience. This half-normalled input disconnects the rear input while in use.

RUNS COLD

Digital technology allows the amp to squeeze into a Techconnect module. Analogue amps produce heat as a byproduct which limits the minimum size of the amplifier. Digital amps run cold so no bulky heatsink necessary.

ZERO ENERGY CONSUMPTION

Uses no power at all unless it is actually amplifying program. Even on at full volume, unless it is receiving input it is effectively off. 2 X 20W (RMS @ 8 OHMS) Massive power output is provided by the latest low impedance Texas InstrumentsTM digital amplifier chip. Can drive up to four speakers with ease.

EXTERNAL POWER SUPPLY

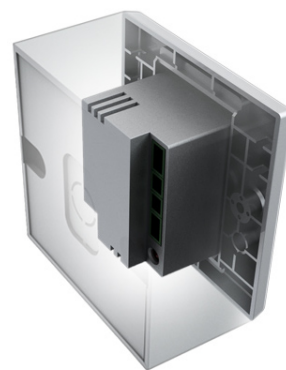
Laptop-style power supply with 3m DC tail which can be shortened means easy routing of power cable through trunking. Velcro is included for fixing the power supply in place, or a blank surround is available to hide it in a standard double-gang UK backbox.

CABLES AND BACKBOX INCLUDED

Comes with input and speaker cables, plus a single-gang Techconnect surround and backbox. Can alternately be integrated into a doublegang Techconnect AV faceplate with other input/output modules.

WALL MOUNTED & SECURE

No furniture is required it is much less obvious as a target for theft. Perfect for training rooms, boardrooms, and classrooms.



ASK DAVE...

If you have any questions just ask Dave. He's an installer just like you and he'll be happy to help. Go to www.visionaudiovisual.com/askdave



SPECIFICATIONS

AMPLIFIER DIMENSIONS

42 x 71 x 40mm

CARTON DIMENSIONS

230 x 100 x 63mm

AMPLIFIER WEIGHT

63 grams

PACKAGED WEIGHT

1.1kg

COLOUR

White

INPUTS

2 x Stereo inputs

TECHNICAL DETAILS

2 x 20w @ 8 ohms

Total Harmonic Distortion less than or equal to 1% (20Hz~22kHz)

Frequency response (line in): 80Hz~22kHz(±2dB)

Signal to noise ratio (line in): more than or equal to 98dB (A-weighted)

Rating input level/impedance: Line in 500mV/50k?

Power Supply 100-240vAC 50/60Hz, Max 1A, DC Output 12V 4A, DC Cable 3m

Power consumption (rating condition): less than or equal to 40W

ACCESSORIES INCLUDED

1 x Single-gang Backbox

1 x Single-gang Surround

2 x 150mm input cables

2 x Unshielded Speaker cable 5m long

1 x Euro Figure-8 Power cable 2m long

1 x UK Figure-8 Power cable 2m long

1 x IR Remote Control (with 3V Lithium CR2025 battery)

POWER SUPPLY

100/230V External Laptop-style Power Supply

PALLET QUANTITY: 400

WARRANTY: 2-year return to base

COMPLIANCE: RoHS, WEEE & CE Compliant

ORDER PART CODE

TC2-AMP2 [SAP:1872510]

or TC2-AMP2 +SP-1300B bundle [SAP:1703068]

or TC2-AMP2 +SP-1300W bundle [SAP: 1703069]

or TC2-AMP2 +CS-1300 bundle [SAP: 1703070]

Optional Power Supply: TC2 CTL2PWR 1872512

