

Approximate Projection Distances

Type	On-Axis Wide Fixed Lens	On-Axis Wide Fixed Lens	Wide Zoom Lens	Wide Zoom Lens	Wide Zoom Lens	Standard Zoom Lens	Standard Zoom Lens	Semi-Long Zoom Lens	Long Zoom Lens	Ultra-Long Zoom Lens	
Part Number	LNS-W03	LNS-W01Z	LNS-W06	LNS-W02Z	LNS-W04	LNS-S02Z	LNS-S03	LNS-M01Z	LNS-T02	LNS-T03	
Image											
Zoom/ Focus	Fixed/ Manual	Fixed/ Manual	x13/ Motor-Driven	x13/ Motor-Driven	x13/ Motor-Driven	x13/ Motor-Driven	x13/ Motor-Driven	x13/ Motor-Driven	x14/ Motor-Driven	x14/ Motor-Driven	
Twin Stack Support*1	No	No	Yes	Yes	Yes	Yes	Yes	Yes	Yes	Yes	
Image Size	40" - 600"	40" - 600"	40" - 600"	40" - 600"	40" - 600"	40" - 600"	100" - 600"	40" - 600"	40" - 600"	40" - 600"	
Optical Axis	H1:H2	1:1 (Fixed)	8:1 - 1:8 (approx.)	8:1 - 1:8 (approx.)	8:1 - 1:8 (approx.)	10:0 - 0:10 (approx.)	8:1 - 1:8 (approx.)	8:1 - 1:8 (approx.)	8:1 - 1:8 (approx.)	8:1 - 1:8 (approx.)	
	W1:W2	1:1 (Fixed)	3:2 - 2:3 (approx.)	1:1 (Fixed)	3:2 - 2:3 (approx.)	1:1 (Fixed)	3:2 - 2:3 (approx.)	3:2 - 2:3 (approx.)	3:2 - 2:3 (approx.)	3:2 - 2:3 (approx.)	
Throw Distance*2 (unit: m (feet))	40"	0.60 (2.0)	0.91 (3.0)	0.9 - 1.2 (3.0 - 3.8)	1.1 - 1.4 (3.5 - 4.7)	1.1 - 1.6 (3.8 - 5.1)	1.5 - 2.0 (4.8 - 6.5)	-	2.9 - 3.7 (9.4 - 12.1)	3.7 - 5.1 (12.3 - 16.8)	5.3 - 7.6 (17.3 - 24.8)
	60"	0.93 (3.1)	1.41 (4.6)	1.4 - 1.8 (4.6 - 5.9)	1.6 - 2.2 (5.4 - 7.1)	1.8 - 2.4 (5.9 - 7.9)	2.3 - 3.1 (7.6 - 10.1)	-	4.3 - 5.5 (14.0 - 18.0)	5.5 - 7.6 (18.1 - 24.9)	7.7 - 11.2 (25.4 - 36.7)
	80"	1.27 (4.2)	1.90 (6.2)	1.9 - 2.4 (6.2 - 8.0)	2.2 - 2.9 (7.3 - 9.6)	2.4 - 3.2 (8.0 - 10.6)	3.2 - 4.2 (10.4 - 13.7)	-	5.6 - 7.3 (18.5 - 23.9)	7.3 - 10.0 (23.8 - 33.0)	10.2 - 14.8 (33.4 - 48.6)
	100"	1.60 (5.3)	2.40 (7.9)	2.4 - 3.1 (7.8 - 10.1)	2.8 - 3.7 (9.2 - 12.1)	3.1 - 4.1 (10.1 - 13.4)	4.0 - 5.3 (13.1 - 17.3)	5.2 - 7.1 (17.1 - 23.3)	7.0 - 9.1 (23.1 - 29.8)	9.0 - 12.5 (29.6 - 41.1)	12.6 - 18.4 (41.5 - 60.4)
	150"	2.43 (8.0)	3.64 (12.0)	3.6 - 4.7 (11.8 - 15.3)	4.3 - 5.6 (14.0 - 18.3)	4.7 - 6.2 (15.4 - 20.3)	6.1 - 8.0 (20.0 - 26.2)	7.9 - 10.7 (26.0 - 35.2)	10.5 - 13.6 (34.5 - 44.5)	13.4 - 18.7 (44.0 - 61.3)	18.8 - 27.4 (61.7 - 90.1)
	200"	3.27 (10.7)	4.88 (16.0)	4.8 - 6.2 (15.8 - 20.5)	5.7 - 7.5 (18.7 - 24.5)	6.3 - 8.3 (20.6 - 27.2)	8.2 - 10.7 (26.9 - 35.2)	10.6 - 14.4 (34.8 - 47.1)	14.0 - 18.1 (46.9 - 59.3)	17.8 - 24.9 (58.5 - 81.5)	24.9 - 36.5 (81.8 - 119.7)
	250"	4.10 (13.5)	6.12 (20.1)	6.0 - 7.8 (19.8 - 25.7)	7.2 - 9.3 (23.5 - 30.7)	7.9 - 10.4 (25.9 - 34.0)	10.3 - 13.5 (33.8 - 44.2)	13.3 - 18.0 (43.6 - 59.0)	17.4 - 22.6 (57.2 - 74.0)	22.2 - 31.0 (72.9 - 101.8)	31.1 - 45.5 (102.0 - 149.3)
300"	4.93 (16.2)	7.37 (24.2)	7.3 - 9.4 (23.8 - 30.9)	8.6 - 11.2 (28.2 - 36.8)	9.5 - 12.5 (31.2 - 40.0)	12.4 - 16.2 (40.7 - 53.2)	16.0 - 21.6 (52.5 - 70.9)	20.9 - 27.0 (68.6 - 88.7)	26.6 - 37.2 (87.3 - 122.0)	37.3 - 54.5 (122.2 - 179.0)	

*1: Full lens performance may not be available at some projection distances.

*2: Approximate projection distances are calculated based on lens specifications. Individual lenses may diverge from this figure by up to 5% due to slight variations in lens size and shape.

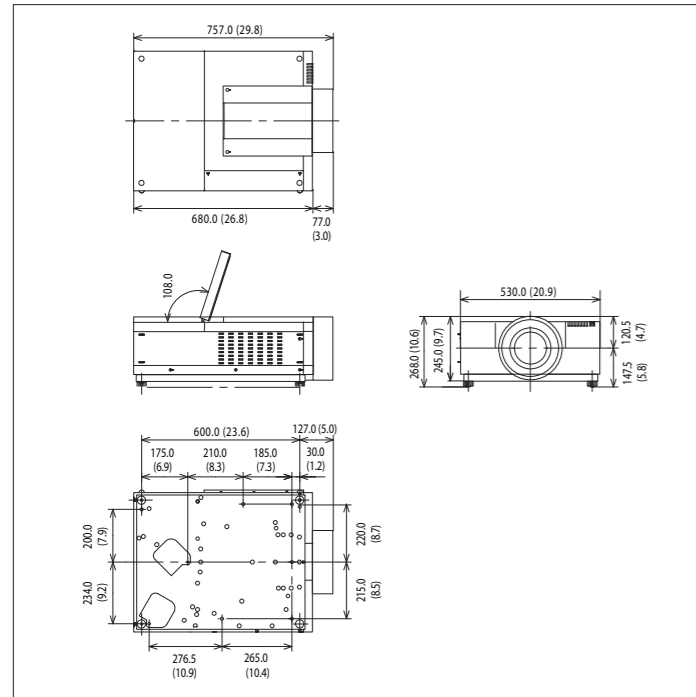
Remote Control



Terminals



Dimensions (unit: mm (inch))



All products manufactured by the Projector Division of SANYO's Digital System Company employ a quality management system that has undergone the inspection and registration process of the ISO 9001 international standard.

<http://www.sanyo-lcdp.com/>

Caution: Please consult the instruction manual to ensure safe and proper operation of the product.

Specifications

Model	PLC-XF1000
Type	3-color LCD shutter projection
Optics	Dichroic mirror separation/ prism synthesis
LCD panels	Size: 1.8 Number of pixels: 1024 x 768 x 3
Projection lens	Lenses sold separately.
Lamp (output/type)	330 W NSHA x 2
Projection size	Lenses sold separately.
Color reproduction	Approx. 1.07 billion
brightness*1	12000 (With separately available lens LNS-S03.)
Uniformity*1	90 % (corner to center)
Supported scanning frequencies	H/V sync 15 - 120Hz, 48 - 120Hz Dot clock 230 MHz or less
Supported RGB resolutions	WUXGA/ UXGA/ SXGA+/ SXGA/ WXGA/ XGA/ SVGA/ VGA/ MAC
Signal input terminal	inputs1: DVI-D (HDCP) / RGB (D-Sub 15 pin) inputs2: RGBHV / Y/ VIDEO, Pb / Cb, Pr / Cr (BNC x 5) S-Video (Mini-DIN4) inputs3: For option board inputs4: For option board
Other I/O	RS232C IN/ OUT (D-sub 9pin x 2), Wired remote control (minijack)
Operating temperature	5 - 40 C
Power supply	100 - 120 V / 200 - 240 V AC
Power consumption	940 W
Dimensions (W x H x D)	530.0 x 268.0 x 757.0 mm (20.9 x 10.6 x 29.8 inch)
Weight	276 kg (60.8 lbs)
Accessories	-Wireless / Wired Remote Unite (Two "AA" type Batteries) -Owners Manual (CD-Rom & Quick Reference Guide) -Computar Cable (D-sub15 - D-sub15) -AC Cord x 1 (depending on destination) -Lens Attachment x 2 -Lens spacer -Light block sheet x 3 -PIN code Level -Real Color Manager Pro CD-Rom x 1

*1: The figures are averages of all products at the time of shipment, and are indicated in accordance with JIS X6911: 2003 Data Projector Specifications Format. The measurement method and conditions are described in Appendix 2. Replacement Lamp type No: PLC-XF1000/POA-LMP128 (610 341 9497)

*2: Specifications as of December 18, 2009 subject to change.

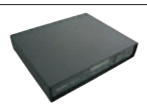
*All product names and company names are trademarks or registered trademarks of their respective companies

Option Board

DVI / D-sub module	POA-MD23ADI
5BNC / VIDEO module	POA-MD25VD3
DVI module	POA-MD18DVI
5BNC module	POA-MD16VD1
Network module	POA-MD13NET2 (After Ver.4.404)
HD & SD-SDI module (SD-SDI not compatible)	POA-MD17SDID
HD DATA WIRELESS receiver board *2	POA-MD26HDWL
D-sub15 module	POA-MD04VGA
Warp & Blending	POA-MD21WARP

Transmitter*2

POA-HDTM01



*2: This system cannot be used in some regions. For details, please consult



SANYO's Digital System Company has received ISO 14001 certification for the environmental management system used in its factory.



Pixelworks ICs are used in this projector

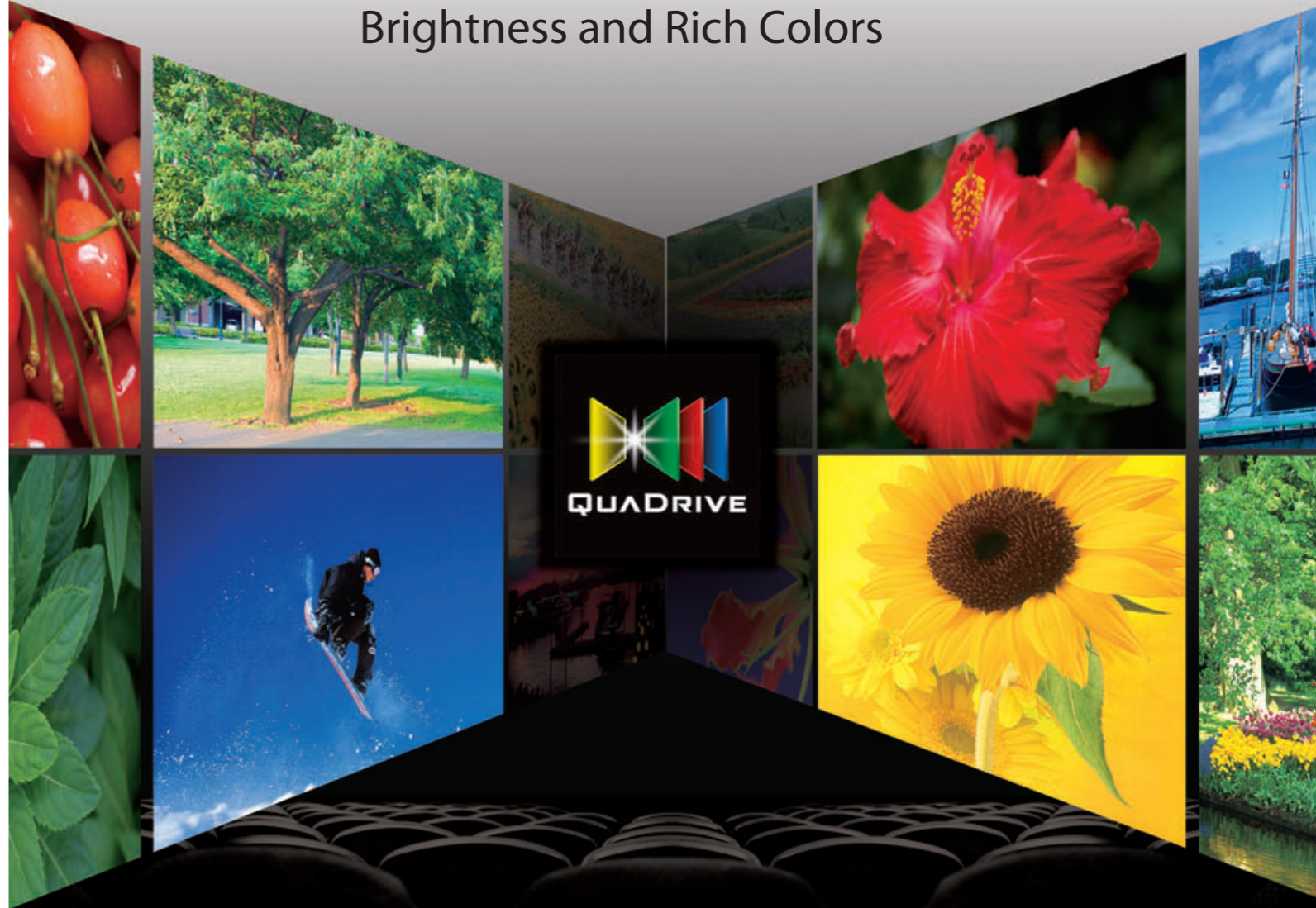
Think GAIA
For Life and the Earth

SANYO

Multimedia Projector

PLC-XF1000

Emotionally Powerful Images with Crisp
Brightness and Rich Colors



SANYO

SANYO Electric Co., Ltd.
Digital System Company

©2009 SANYO Printed in Japan 2009.12.51.
SML147

Distributed by:

Large-Screen Solutions for Your Business.

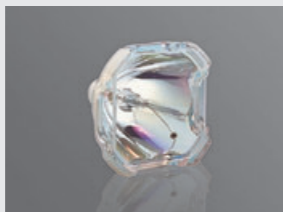
Ideal for Large Conference and Other Halls, Digital Signage Applications, Seminars and Lecture Halls



digital signage

Class-Leading 12,000 Lumens Brightness Excels in Large-Screen Projection

A bright 330-watt lamp (NSHA measurement) gives the PLC-XF1000 a full 12,000 lumens of brightness, the highest in its class.*1 This makes it ideal for use in large halls, conference rooms and classrooms, as well as in digital signage applications.

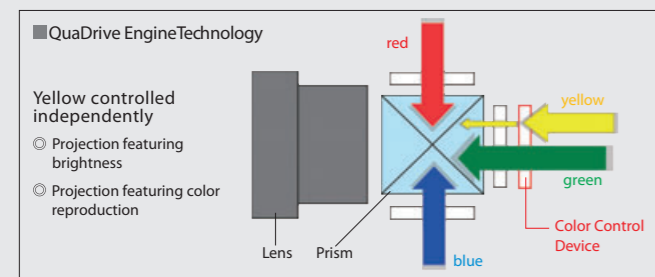
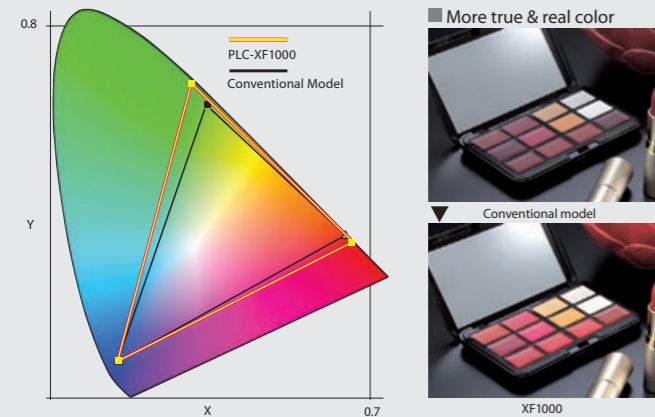


*1: For a dual-lamp projector, as December 18, 2009. In dual-lamp mode and with optional LNS-503 lens.

QuaDrive Engine

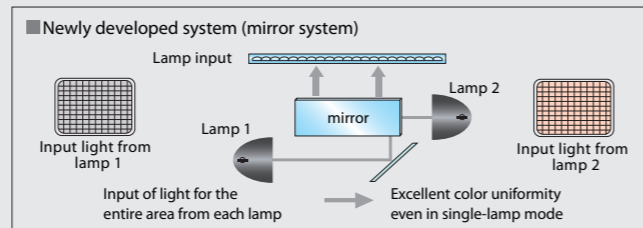
"QuaDrive" optical engine in the XF1000 is a newly developed and highly advanced version of the conventional 3LCD system, and features an additional Color Control Device. By controlling the amount of yellow light, the Color Control Device increases the level of color purity by approximately 20% compared with our previous model.*2 This gives images remarkable levels of both brightness and color.

*2:PLC-XP100L



Dual-Lamp Light-Combining Technology

The new light-combining system was developed after extensively reexamining the conventional dual-lamp layout. The new system uses three mirrors to achieve uniform light output from two lamps, reducing color irregularities and delivering high image quality.



Active Maintenance Filter (AMF)

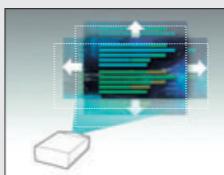
The AMF sensor detects the intake air volume. If the volume is less than the prescribed level, the filter is automatically round and a clean filter surface is set in position. The filter can also be replaced without having to use any tools.



Power Lens Shift

The motor-driven lens shift function*3 makes it easy to adjust the projected image position without having to move the projector itself. This greatly simplifies projector set-up. It also helps when adjust the images from two stacked units.

*3: Depends on the mounted lens.



Optional Lenses

From short to long focus types, Sanyo offers a variety of optional lenses to match the projection distance, screen size, and projection conditions.

Lens Center Layout (Symmetry Design)

A Symmetry Design is used (left-right center layout = left-right centered optical axis). This makes on-site setup easier.



Network Control

PJ-Net Organizer (option)

To use the PJ-Net technology, simply attach the PJ-Net Organizer to the projector

PJ Master (option)

The PJ Master software allows centralized control of PJ-Net Organizer-mounted projectors over a network. Install PJ Master on your PC or server.

PJ-Net Organizer Usage Example

Projectors connected by the PJ-Net Organizer let you access the following advanced centralized control functions.

*Monitoring the internal temperature of the projector *Notification of lamp-related information (e.g. malfunction, operating hours, etc.) *Comprehensive management of network-connected projectors *Database applications for all acquired data

- Network Capture Function
- Web-based Management
- Network Viewer Function
- E-mail Alert Function Sends Messages

High-Contrast Design

This advanced optical system achieves high contrast*4 to project high-quality images with rich black reproduction, maximizing the quality of the video signals.

*4: Contrast ratio (full on/ full off) of 4,000:1 (PLC-XF1000).

Mechanical shutter

There's also a Mechanical Shutter System which is popular for a variety of elite professional uses. The amazing PLC-XF1000 fills the needs of a host of demanding business venues including meeting, entertainment and promotional applications.

HDWireless

The Uncompressed HD*5 Data Wireless Transmission System transmits pure, uncompressed data without any delays between images and sounds. It simplifies the set-up process in places like large rooms, halls and theaters because it eliminates the need to run cables and wires from sources to the projector. Advanced wireless system technology allows uncompressed data projection even from distances of up to 30 meters*6 away from the input source.

*5 This system cannot be used in some regions. For details, please consult a sales professional at your nearest retail outlet.

*6 This distance may vary depending on conditions.

Other Features and Functions

- Multi-Versatile Interface Platform System
- 360-degree tilt angle
- 3D Digital Noise Reduction
- Power management function
- Easy lamp replacement
- Digital keystone function (Vertical: Max 40 Horizontal: Max 20)

lecture room



large conference room



cinema complex



PLC-XF1000 XGA 12000 lm QUADRIVE