

 **Optoma**[®]



MOBILE LED PROJECTOR
USER'S MANUAL



EYE SAFETY WARNINGS

- Avoid staring/facing directly into the projector beam at all times. Keep your back to the beam as much as possible.
- A stick or laser pointer is recommended to avoid the need for the user to enter the beam.
- When projector is used in a classroom, adequately supervise students when they are asked to point out something on the screen.
- In order to minimize power, use room blinds to reduce ambient light levels.

A.2.9.31 GLOSS OF HOUSING OF PERIPHERAL DEVICES (15TH / 22 MEETING AG1 EK1):

The requirements for the gloss of housing apply to peripheral devices used at the visual display workplace according to BildscharbV. Peripheral devices intended for use outside the visual display workplace can receive a GS-Mark if the scope is indicated in the User's Manual as well as the certificate.

That means the following wording is possible in situations where the use within the field of view is not intended and where sufficient hints are given in the User's Manual for the avoidance of such situations to ensure that display work is not affected.

Wording in the certificate: "This device is not intended for use in the direct field of view at visual display workplaces. To avoid incommoding reflexions at visual display workplaces this device must not be placed in the direct field of view."

REGULATION & SAFETY NOTICES

This appendix lists the general notices of your Projector.

FCC notice

This device has been tested and found to comply with the limits for a Class B digital device pursuant to Part 15 of the FCC rules. These limits are designed to provide reasonable protection against harmful interference in a residential installation. This device generates, uses, and can radiate radio frequency energy and, if not installed and used in accordance with the instructions, may cause harmful interference to radio communications.

However, there is no guarantee that interference will not occur in a particular installation. If this device does cause harmful interference to radio or television reception, which can be determined by turning the device off and on, the user is encouraged to try to correct the interference by one or more of the following measures:

- Reorient or relocate the receiving antenna.
- Increase the separation between the device and receiver.
- Connect the device into an outlet on a circuit different from that to which the receiver is connected.
- Consult the dealer or an experienced radio/television technician for help.

Notice: Shielded cables

All connections to other computing devices must be made using shielded cables to maintain compliance with FCC regulations.

Caution

Changes or modifications not expressly approved by the manufacturer could void the user's authority, which is granted by the Federal Communications Commission, to operate this device.

Operation conditions

This device complies with Part 15 of the FCC Rules. Operation is subject to the following two conditions:

1. this device may not cause harmful interference, and
2. this device must accept any interference received, including interference that may cause undesired operation.

Notice: Canadian users

This Class B digital apparatus complies with Canadian ICES-003.

Remarque à l'intention des utilisateurs canadiens

Cet appareil numérique de la classe B est conforme à la norme NMB-003 du Canada.

Declaration of Conformity for EU countries

- EMC Directive 2004/108/EC (including amendments)
- Low Voltage Directive 2006/95/EC
- R & TTE Directive 1999/5/EC. (if product has RF function)

IMPORTANT SAFETY INSTRUCTION

1. Do not block any ventilation openings. To ensure reliable operation of the projector and to protect from over heating, it is recommended to install the projector in a location that does not block ventilation. As an example, do not place the projector on a crowded coffee table, sofa, bed, etc. Do not put the projector in an enclosure such as a book case or a cabinet that restricts air flow.
2. Do not use the projector near water or moisture. To reduce the risk of fire and/or electric shock, do not expose the projector to rain or moisture.
3. Do not install near heat sources such as radiators, heaters, stoves or any other apparatus such as amplifiers that emits heat.
4. Do not use the projector in direct sunlight.
5. Do not use near any appliance generating a strong magnetic field.
6. Do not use the projector in areas susceptible to excessive dust and dirt.
7. Turn off the product before cleaning.
8. Disconnect the power cord if the product is not being used for a long period of time.
9. Ensure that the ambient room temperature is within 5- 35°C.
10. Relative Humidity is 5 - 35°C, 80% (Max.), non-condensing.
11. Do not drop, throw or try to bend your product.
12. May explode if disposed of in fire.
13. Clean only with dry cloth.
14. Only use attachments/accessories specified by the manufacturer.
15. Do not use the unit if it has been physically damaged or abused. Physical damage/abuse would be (but not limited to):
 - Unit has been dropped.
 - Charger or plug has been damaged.
 - Liquid has been spilled on to the projector.
 - Projector has been exposed to rain or moisture.
 - Something has fallen in the projector or something is loose inside.
 Do not attempt to service the unit yourself. Opening or removing covers may expose you to dangerous voltages or other hazards. Please contact your local reseller or service center before you send the unit for repair.
16. Do not let objects or liquids enter the projector. They may touch dangerous voltage points and short out parts that could result in fire or electric shock.
17. See projector enclosure for safety related markings.
18. The unit should only be repaired by appropriate service personnel.
19. Do not touch the projector for a long time while the projector is used.

DISPOSAL OF OLD ELECTRICAL & ELECTRONIC EQUIPMENT

(Applicable throughout the European Union and other European countries with separate collection programs)

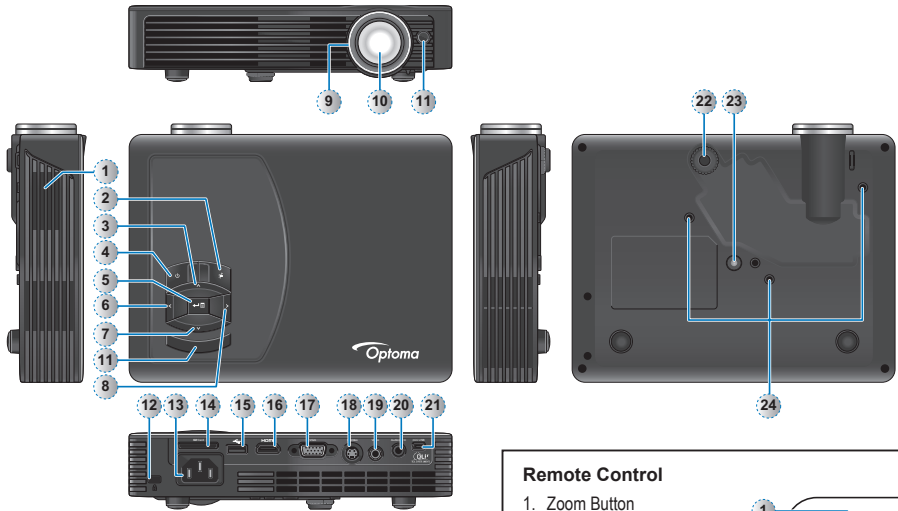
This symbol found on your product or on its packaging, indicates that this product should not be treated as household waste when you wish to dispose of it. Instead, it should be handed over to an applicable collection point for the recycling of electrical and electronic equipment. By ensuring this product is disposed of correctly, you will help prevent potential negative consequences to the environment and human health, which could otherwise be caused by inappropriate disposal of this product. The recycling of materials will help to conserve natural resources.



This symbol is only valid in the European Union.

If you wish to discard this product, please contact your local authorities or dealer and ask for the correct method of disposal.

PRODUCT OVERVIEW

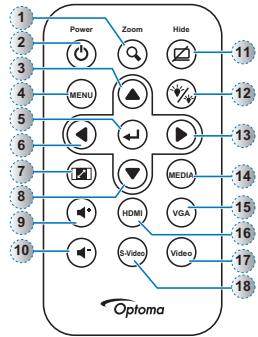


- | | |
|---------------------------|-----------------------------|
| 1. Speaker | 13. DC Input |
| 2. Auto Source Button (⏪) | 14. SD Card Slot |
| 3. Up Button (▲) | 15. USB Type A Port |
| 4. Power Button (⏻) | 16. HDMI Connector |
| 5. OK Button (↵) | 17. VGA Connector |
| 6. Left Button (◀) | 18. S-Video Input Connector |
| 7. Down Button (▼) | 19. Video In |
| 8. Right Button (▶) | 20. Audio / AV In |
| 9. Focus Dial | 21. Mini USB Port |
| 10. Lens | 22. Elevator Foot |
| 11. IR Receiver | 23. Screw Hole for Tripod |
| 12. Kensington Lock | 24. Ceiling Mount Holes |

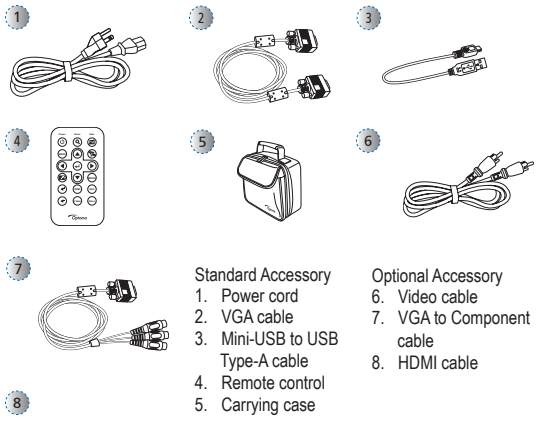
<Note>
Items 3 and 5-8 are also function buttons. Functions vary depending on the current mode.

Remote Control

- Zoom Button
- Power Button
- Up Button
- Menu Button
- OK Button
- Left Button
- Aspect Ratio Button
- Down Button
- Volume Up Button
- Volume Down Button
- Hide Button
- LED Mode Button
- Right Button
- Media Button
- VGA Button
- HDMI Button
- Video Button
- S-Video Button



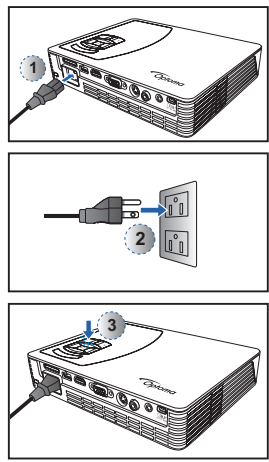
PACKAGE OVERVIEW



- | | |
|---------------------------------|---------------------------|
| Standard Accessory | Optional Accessory |
| 1. Power cord | 6. Video cable |
| 2. VGA cable | 7. VGA to Component cable |
| 3. Mini-USB to USB Type-A cable | 8. HDMI cable |
| 4. Remote control | |
| 5. Carrying case | |

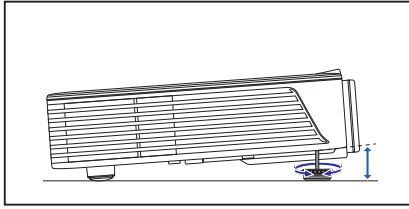
<Note>
• The standard accessories may vary in each region due to different applications.
• The inclusive power cord varies per region.

POWER ON / OFF



- Connect the power cord to the AC IN input jack on the rear of the projector. (①)
- Insert the plug at the other end of the power cord into a power outlet. (②)
The LED lights red in standby mode.
- Press the Power button (⏻) to turn the projector on or off. (③)
The LED turns blue when the projector is turned on.

ADJUST PROJECTED IMAGE HEIGHT



The projector is equipped with an elevator foot for adjusting the projected image height.

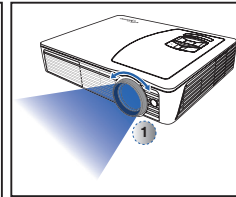
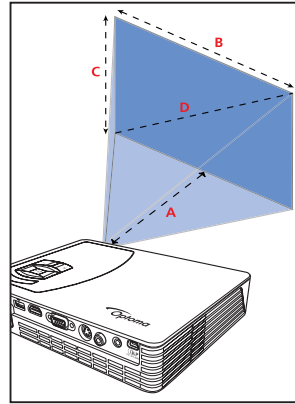
To adjust the height:
Turn the elevator foot to adjust the projected image position to the desired height.

<Note>

After a few seconds, if there is no changes, the projector will automatically adjust the image display via Auto Keystone function.

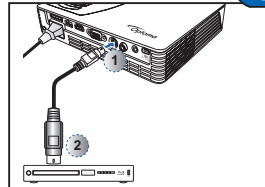
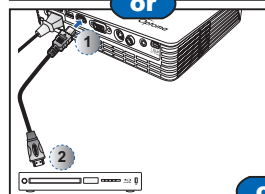
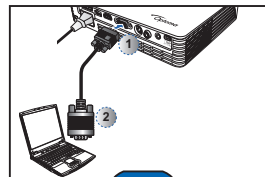
ADJUST THE PROJECTED IMAGE

Projection Distance (A)		Screen Size - Width (B)		Screen Size - Height (C)		Screen Diagonal (D)	
Meter	Inch	(mm)	(inch)	(mm)	(inch)	(mm)	(inch)
0.5	20.18	366.2	14.4	226.9	9	432	17
0.9	35.62	646.2	25.4	403.9	15.9	762	30
1.5	59.36	1077	42.4	673.1	26.5	1270	50
1.8	71.23	1292.3	50.9	807.7	31.8	1524	60
2.4	94.98	1723.1	67.8	1077	42.4	2032	80
3.0	118.72	2153.9	84.8	1346.2	53	2540	100
3.6	142.46	2584.7	101.8	1615.4	63.6	3048	120
4.5	178.08	3230.9	127.2	2019.3	79.5	3810	150
5.4	213.7	3877	152.6	2423.2	95.4	4572	180

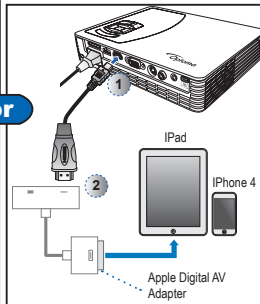


Adjust the focus (1) until the image is clear.

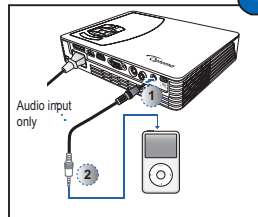
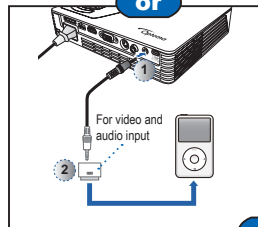
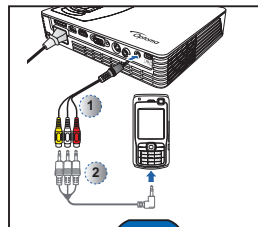
CONNECT INPUT SOURCE - VGA / S-VIDEO / HDMI



1. Connect the VGA / S-Video / HDMI device using an appropriate cable. (1~2)
2. After powering on the projector, press to switch input source.



CONNECT INPUT SOURCE - COMPOSITE AV IN

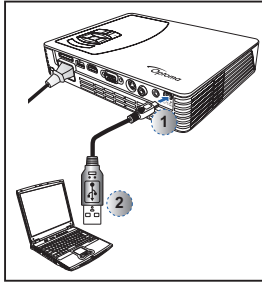


1. Connect the AV input source. (1~2)
2. After powering on the projector, press to switch input source.

<Note>

1. All other brand and product names are trademarks or registered trademarks of their respective companies.
2. The cables connecting the video output devices are not supplied, please contact the device vendor or Optoma.
3. iPod nano/iPod touch/iPhone/iPod classic (version 5 and above)
4. Designed for iPod/iPhone/Mobile phone/PMP with TV out functions. Using with devices with audio signal voltage > 0.3Vrms is not recommended.

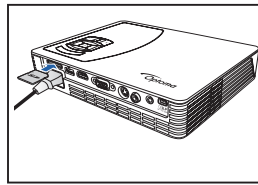
CONNECT COMPUTER FOR USB DISPLAY



You can project your computer display using the projector's mini USB port.

1. Connect a laptop or PC using the supplied mini-USB to USB Type-A cable.
2. Turn on the projector.
3. Press </>/^/∨ to highlight **mini-USB > USB Display** and press ←/→ to enter USB display mode.
See "USB Display Mode" section in "USB Mode" on page 16.

INSERT SD CARD



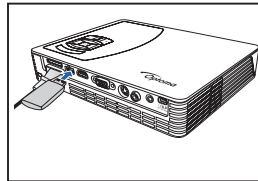
By default, the projector displays from the internal memory. However if an SD card is inserted, the projector reads from the SD card first.

Insert an SD card into the slot with the gold contacts facing down.

<Note>

- To remove the SD card, push the card to eject it from the slot.
- Do not remove the SD card while the projector is projecting image from the card. This can cause data loss or damage the card.
- Supports SD card size up to 32GB.
- The SD card is not included in the package.

INSERT USB FLASH DRIVE

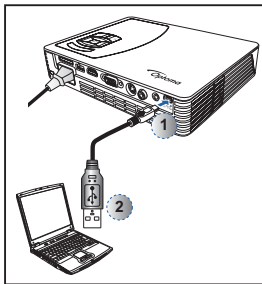


Plug a USB flash drive into the USB Type A port at the back of projector.

<Note>

- Support USB flash drive with FAT32 and NTFS format.

CONNECT COMPUTER FOR DATA TRANSFER



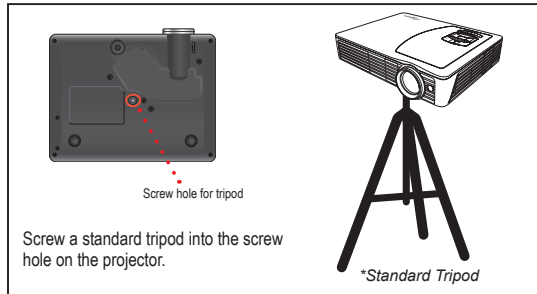
You can transfer data to the projector internal memory or the SD card.

1. Connect a laptop or PC using the supplied mini-USB to USB Type-A cable.
2. Turn on the projector.
3. Press </>/^/∨ to highlight **mini-USB > Data Transfer** and press ←/→ to enter data transfer mode.
4. Browse for Removable Disk.
5. Copy the files to your computer.
See "Data Transfer Mode" section in "USB Mode" on page 18.

<Note>

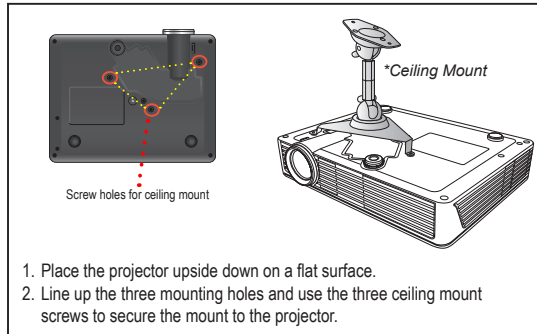
The laptop/PC can only detect the input source when the projector is switched on.

MOUNT THE PROJECTOR



Screw a standard tripod into the screw hole on the projector.

*Standard Tripod

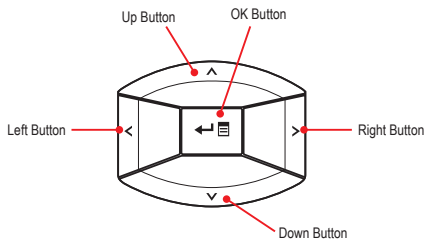


1. Place the projector upside down on a flat surface.
2. Line up the three mounting holes and use the three ceiling mount screws to secure the mount to the projector.

<Note>

The tripod and ceiling mount are optional accessories.

HOW TO USE THE MENU



- Use </>/▲/▼ to highlight the desired option and press ◀▶ to confirm the selection.
- Buttons functionality varies depending on the current mode.

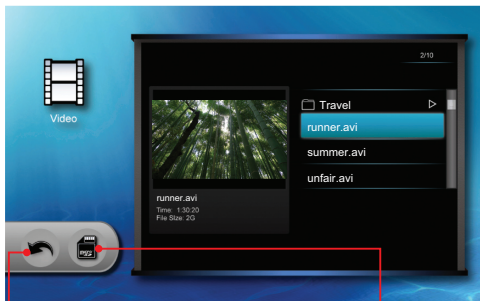
<Note>
A button guide appears on the lower left corner of most screens. The guide varies depending on the current mode. Press the corresponding button to select the option or operation.

Home menu



Press </>/▲/▼ to select the menu item that you want to access and press ◀▶ to enter the menu screen .

Submenu

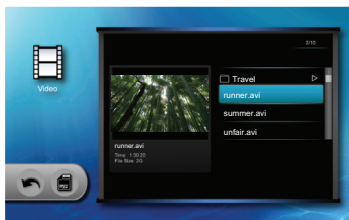


Back icon
Highlight this icon and press ◀▶ to return to previous screen.

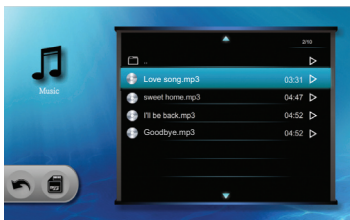
Data source icon
Press to switch the memory sources:
Internal memory » SD card » USB flash drive.

	Internal memory		USB flash drive (only supports FAT 32 format)
	SD card		

Submenu Items



Video menu



Music menu

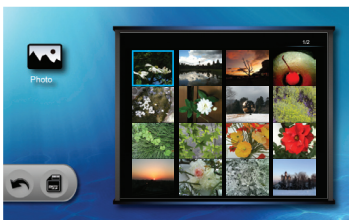


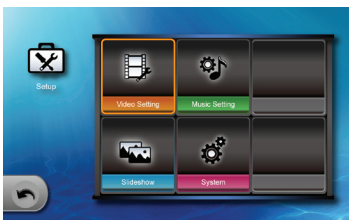
Photo menu



mini-USB menu



Office Viewer menu

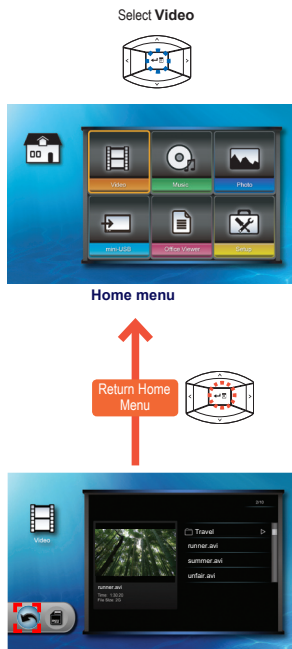


Setup menu

Playing Videos from the Internal Memory, SD Card, or USB Flash Drive

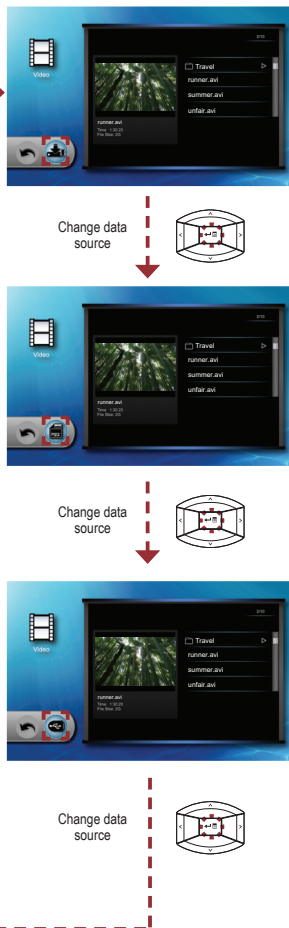
If an SD card is inserted, the content of the memory card is read first. If you want to read data from the internal memory or USB flash drive, press in the appropriate screen to change the data source. See steps below.

1. Enter "Video" Menu



2. Select Data Source

The screen, the source icon on the button guide, and the sequence in which screens appear vary depending on the available data source.

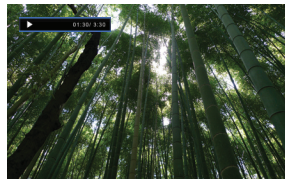


3. Select Video File



Start playback

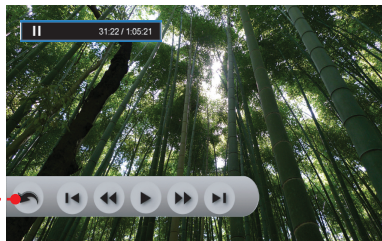
4. Playback File



Video Playback mode (see page 8)

HOW TO PLAY VIDEOS - VIDEO PLAYBACK MODE

<Note>
The button guide disappears when the keypad is not used for 3 seconds.
To display the button guide, press any key.



Highlight this icon and press to exit video playback mode.

Media Playback Control			
	Increase volume		Rewind
	Decrease volume		Fast forward
	Pause		Previous video clip
	Play		Next video clip

VIDEO SETTINGS

1. Select "Setup"

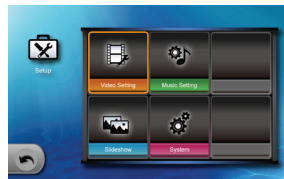


Home menu

2. Enter "Setup" Menu



3. Enter "Video Setting" Menu

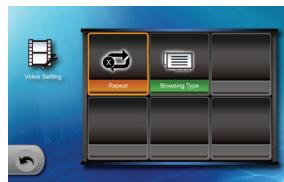


5. Select Option




Repeat		Repeat all
		Repeat one
		Repeat disabled
Browser display		Browser display small icon
		Browser display large icon

4. Select Setting



Playing Music from the Internal Memory, SD Card, or USB Flash Drive

If an SD card is inserted, the content of the memory card is read first. If you want to read data from the internal memory or USB flash drive, press  in the appropriate screen to change the data source. See steps below.

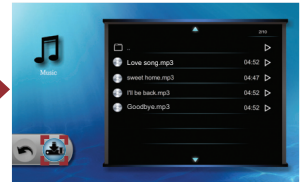
3. Select Data Source

The screen, the source icon on the button guide, and the sequence in which screens appear vary depending on the available data source.

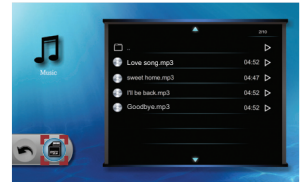
1. Select "Music"



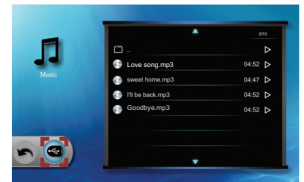
2. Enter "Music" Menu



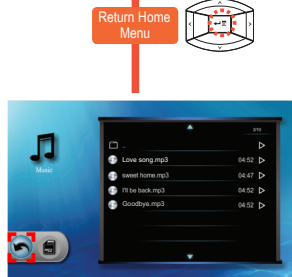
Change data source



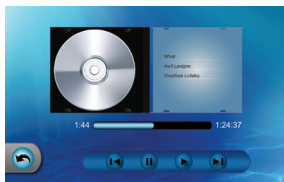
Change data source



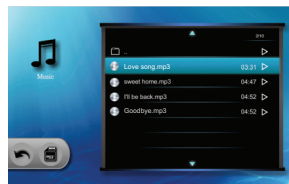
Change data source



5. Playback File



4. Select Music File

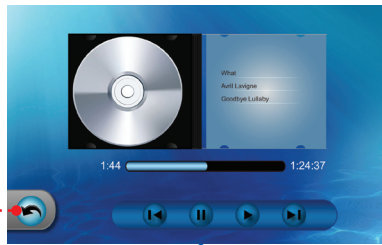


Start playback

<Note>
The displayed screen may vary depending on the selected data source on the previous step.

How to Play Music - Playback Mode

<Note>
The button guide disappears when the keypad is not used for 3 seconds.
To display the button guide, press any key.

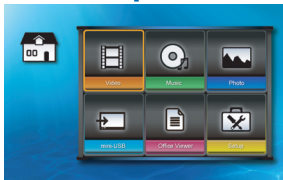


Highlight this icon and press to exit music playback mode.

Media Playback Control			
	Increase volume		Play
	Decrease volume		Previous track
	Pause		Next track

MUSIC SETTINGS

1. Select "Setup"

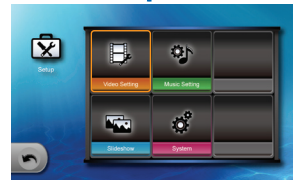


Home menu

2. Enter "Setup" Menu



3. Select "Music Setting"



6. Select Option



Repeat		Repeat all
		Repeat one
		Repeat disabled
Shuffle		Shuffle on
		Shuffle off


5. Select Setting

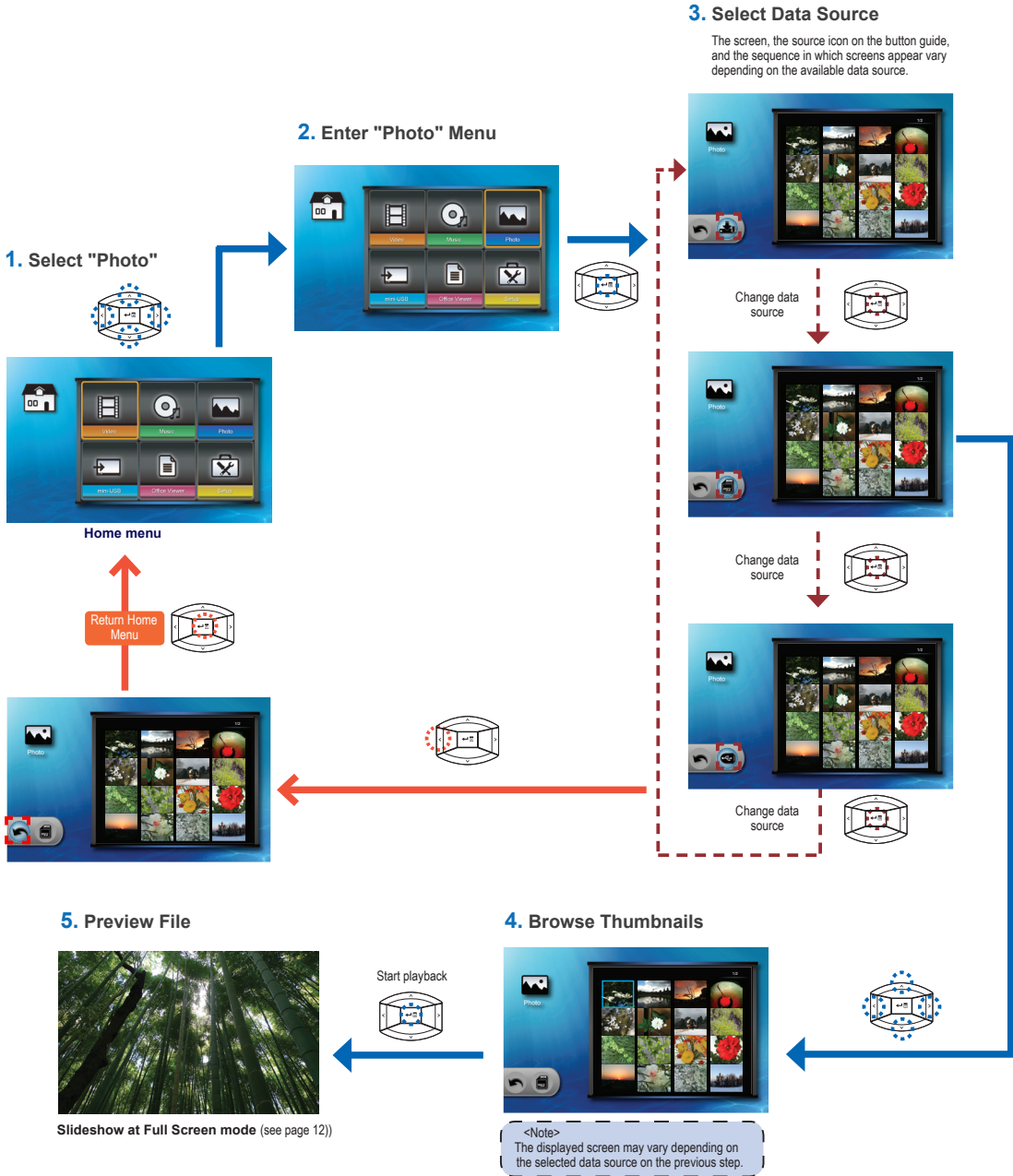


4. Enter "Music Setting" Menu



Viewing Photos from the Internal Memory, SD Card, or USB Flash Drive

If an SD card is inserted, the content of the memory card is read first. If you want to read data from the internal memory or USB flash drive, press  in the appropriate screen to change the data source. See steps below.



HOW TO VIEW PHOTOS - MODE: SLIDESHOW AT FULL SCREEN

During slideshow, photos are played continuously at a specified interval time while playing music stored in the internal memory as background.

<Note>
The button guide disappears when the keypad is not used for 3 seconds.
To display the button guide, press any key.

<Note>

- To change slideshow interval settings and enable/disable background music, see Slideshow Settings below.
- Make sure that background music setting is "On" to enable this feature.
- Save the music files (*.mp3 format) under the "Slideshow Music" folder in the internal memory via data transfer function.
- Only music files stored in the internal memory "Slideshow Music" folder can be played as background music.

Highlight this icon and press to exit slideshow mode.



Media Playback Control			
	Increase volume		Slideshow on
	Decrease volume		Slideshow off

SLIDESHOW SETTINGS

1. Select "Setup"



Home menu

2. Enter "Setup" Menu



3. Select "Slideshow"



6. Select Option



Timer		Timer: 2-second interval
		Timer: 5-second interval
		Timer: 10-second interval
Music		Background music on
		Background music off

5. Select Setting




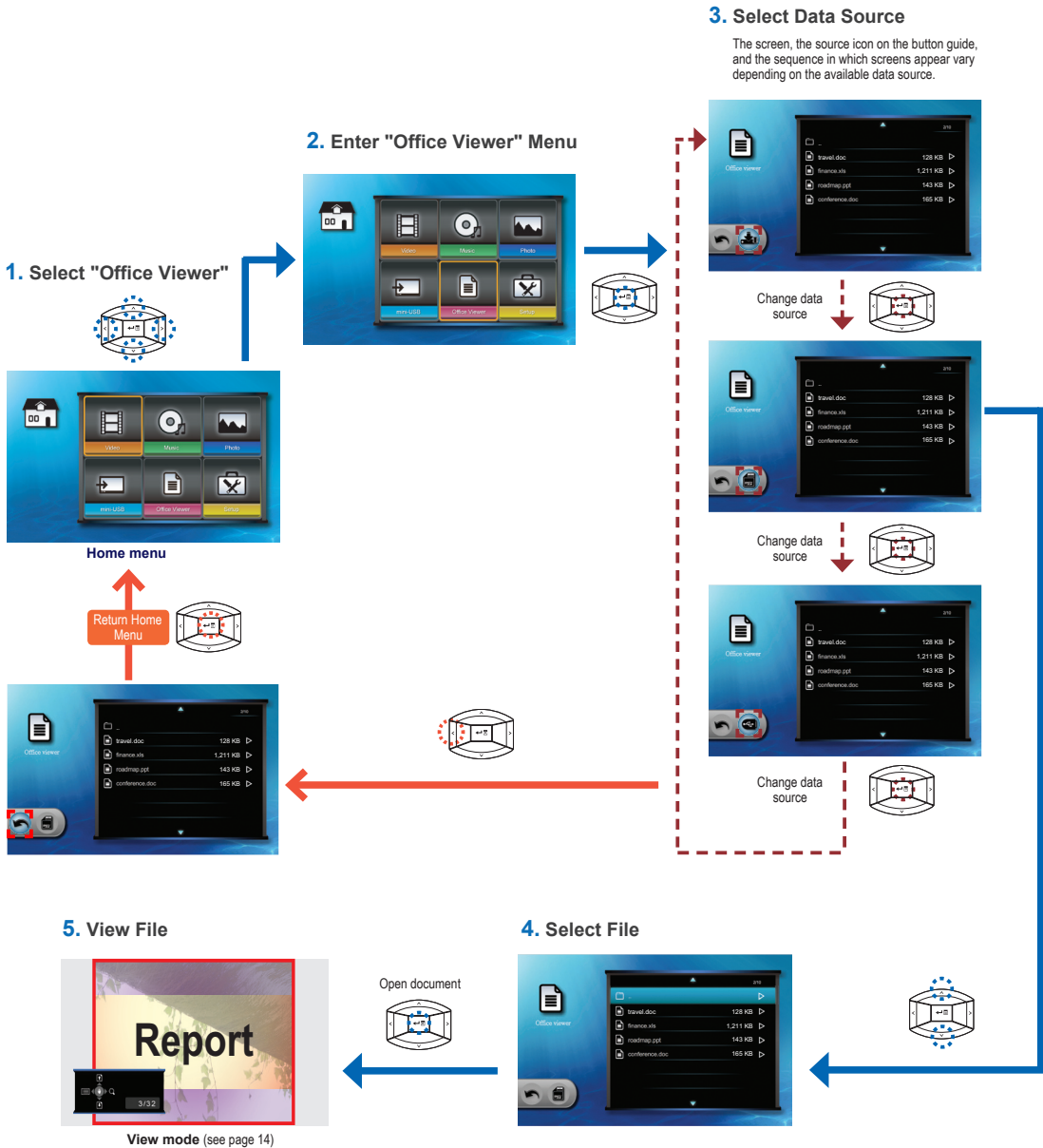
4. Enter "Slideshow" Menu



HOW TO VIEW DOCUMENTS - SOURCE: INTERNAL MEMORY / SD CARD / USB FLASH DRIVE

Viewing Documents from the Internal Memory, SD Card, or USB Flash Drive

If an SD card is inserted, the content of the memory card is read first. If you want to read data from the internal memory or USB flash drive, press  in the appropriate screen to change the data source. See steps below.



HOW TO VIEW DOCUMENTS - VIEW MODE

<Note>
The button guide disappears when the keypad is not used for 3 seconds.
To display the button guide, press any key.

Full screen view



Advanced menu mode



Media Playback Control

- | | | | |
|---|---------------------|--------|--------------------------|
| ▲ | Previous page | > or Q | Zoom in/out page |
| ▼ | Next page | ← | Enter advanced menu mode |
| ◀ | Return to file list | | |

Media Playback Control (Advanced Menu Mode)

- | | | | |
|---|-------------------|---|-------------------------|
| ▲ | Page up | ◀ | Move to the left |
| ▼ | Page down | ← | Exit advanced menu mode |
| > | Move to the right | | |

SELECT MENU LANGUAGE

1. Select "Setup"



Home menu

2. Enter "Setup" Menu



3. Select "System"



6. Select Language

Select item



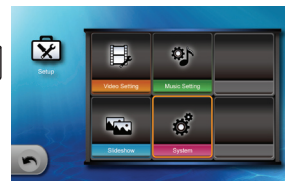
Confirm selection



5. Enter "Language" Menu



4. Enter "System" Menu



Select your preferred menu language:

English	Portuguese (Brazilian)	Russian	Swedish	Simplified Chinese
French	German	Polish	Greek	Korean
Spanish	Italian	Dutch	Traditional Chinese	Japanese

1. Select "Setup"



Home menu

2. Enter "Setup" Menu



3. Select "System"



6. Enter "Information" Menu



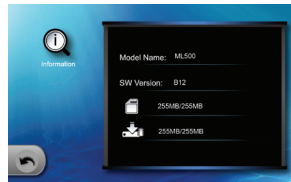
5. Select "Information"





4. Enter "System" Menu



7. View Projector Information



 SD card capacity
 Internal memory capacity

RESET THE SYSTEM

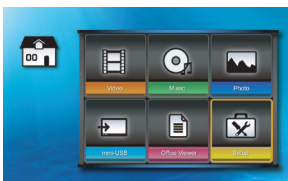
<Note>
When the system is reset, all files stored in the internal memory will be deleted. Ensure all files are backed up before resetting.

1. Select "Setup"

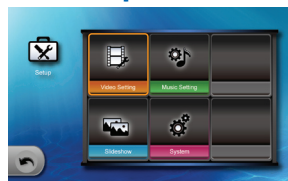


Home menu

2. Enter "Setup" Menu



3. Select "System"



6. Enter "Reset" Menu



5. Select "Reset"

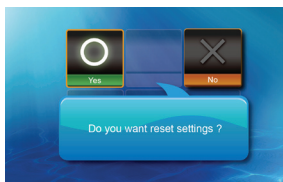


4. Enter "System" Menu



7. Confirm Reset

Select item



No

Yes

Reboot the projector

Return to Home menu



UPGRADE FIRMWARE

Software updates can be obtained from the OPTOMA website
www.optoma.com / www.optoma.eu / www.optoma.com.tw.

1. On your computer, create a folder named "upgrade".
2. Download the latest firmware from www.optoma.com and save it in the "upgrade" folder.
3. Copy the "upgrade" folder to the root folder of the SD card.
4. Insert the SD card into the SD card slot of the projector.
5. Follow the steps below.

1. Select "Setup"



Home menu

2. Enter "Setup" Menu



3. Select "System"



6. Enter "Upgrade" Menu



5. Select "Upgrade"

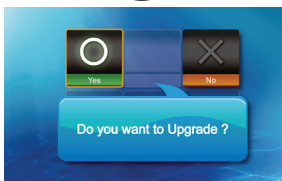


4. Enter "System" Menu



7. Confirm Upgrade

Select item



Yes

No

<Note>
 • A "No new firmware is found" message appears if there is no update file in the SD card.
 • Do not touch any buttons or turn off the projector while upgrading is in progress. Otherwise, this may damage the projector.
 • Do not remove the SD card until the upgrade is complete.

8. Wait to Complete



Upgrade may take a while to complete



Reboot the projector

Return to Home menu



USB MODE

USB Display Mode

<Note>
When using USB Display function for the first time:
1. From the Windows desktop, browse for "USB Display V1.0.1" drive and double-click "dlusb_launcher.exe", see "Data Transfer Mode" below.
2. USB display is not MAC compatible.

1. Select "mini-USB"



Home menu

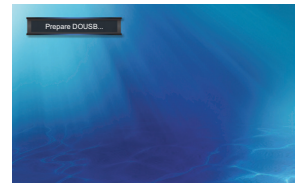
2. Enter "mini-USB" Menu



3. Enter "USB Display" Mode



4. Connect to PC



5. View PC Display



Press to exit USB display mode.

Data Transfer Mode

1. Select "mini-USB"



Home menu

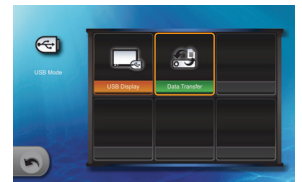
2. Enter "mini-USB" Menu



3. Select "Data Transfer"



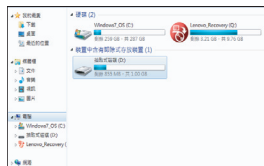
4. Enter "Data Transfer" Mode



5. Connect to PC



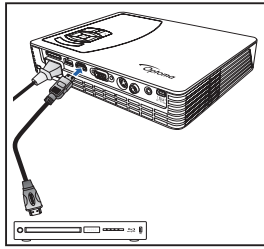
6. Start Transfer Data




When data transfer completes, unplug the USB cable or press to exit PC mode.

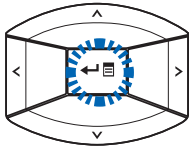
ADJUST MENU SETTINGS FOR EXTERNAL INPUT SOURCE: VGA / COMPOSITE AV / HDMI


Selecting Input Source

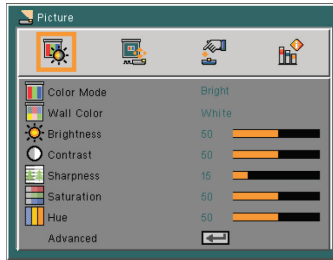


Once a video source device is connected and turned on, press  to switch input source.

Entering Menu Mode

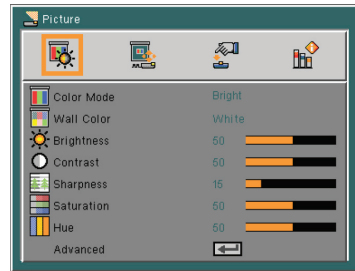


Press  to enter the menu mode.

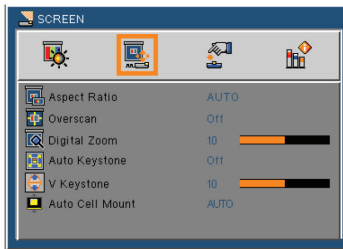


Menu Operation		
<	Select main menu	↙ Enter current submenu
>		↘ Hide OSD menu
Submenu Operation		
↑	Move up	< Adjust setting
↓	Move down	>
↵	Confirm selection	

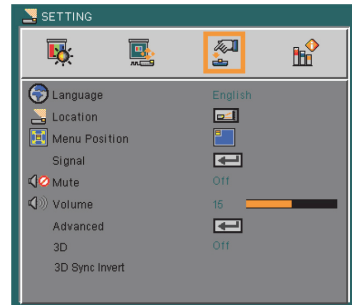
Menu Items



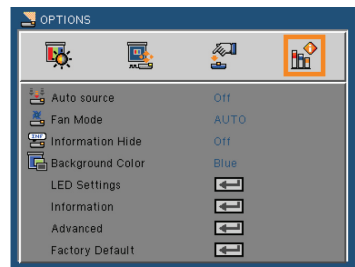
Picture menu



Screen menu



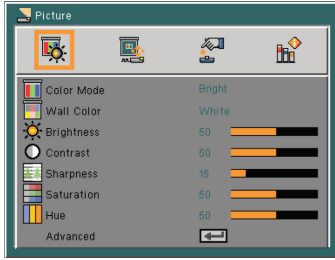
Setting menu



Options menu

1. Select Submenu

Select item



2. Enter Submenu



4. Confirm Settings

Confirm selection / setting



3. Adjust Settings

Adjust setting



Color Mode (Bright / PC / Movie / Picture / User)

Adjust setting



Wall Color (White / Light Yellow / Light Blue / Pink / Dark Green)

Adjust setting



Brightness (0~100)

Adjust setting



Contrast (0~100)

Adjust setting



Sharpness (0~100)

Adjust setting



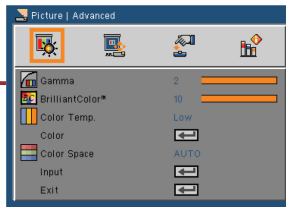
Saturation (0~100)

Adjust setting



Hue (0~100)

Adjust setting

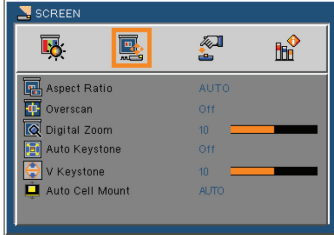


Advanced

Submenu	Option
Gamma	0~2
BrilliantColor™	0~10
Color Temp.	Low / Middle / High
Color Space	Auto / RGB / YUB
Input	HDMI / VGA / COMPOSITE / S-Video / SD_CARD / USB_A / Mini USB_B

1. Select Submenu

Select item



2. Enter Submenu



4. Confirm Settings

Confirm selection / setting



3. Adjust Settings

Adjust setting



Aspect Ratio (AUTO / 4:3 / 16:9 / 16:10)



Overscan (Off / On)



Digital Zoom (0-100)



Auto Keystone (Off / On)



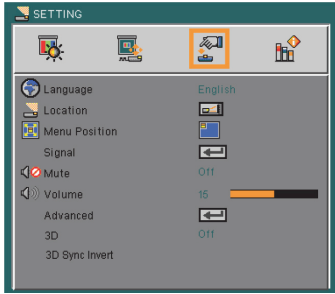
V Keystone (-40-40)



Auto Cell Mount (Auto / Front Desktop / Front Inverted)

1. Select Submenu

Select item



2. Enter Submenu

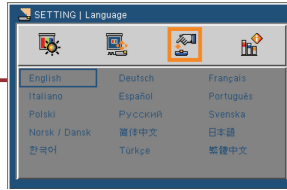


4. Confirm Settings

Confirm selection / setting



3. Adjust Settings



Adjust setting



Language (English / Italian / Polish / Korean / German / Spanish / Russian / Traditional Chinese / Turkish / French / Portuguese / Swedish / Japanese / Simplified Chinese)



Adjust setting

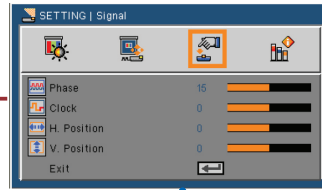


Location (Front Desktop / Rear Desktop)

Adjust setting



Menu Position (Top Left / Top Right / Center / Bottom Left / Bottom Right)



Adjust setting



Signal

Submenu	Option
Phase	
Clock	*range depends on input source
H. Position	
V. Position	



Adjust setting



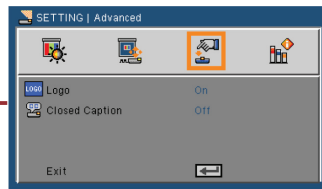
Mute (Off / On)



Adjust setting



Volume (0-100)



Adjust setting



Advanced

Submenu	Option
Logo	Off / On
Closed Caption	Off / CC1 / CC2 / CC3 / CC4 / T1 / T2 / T3 / T4



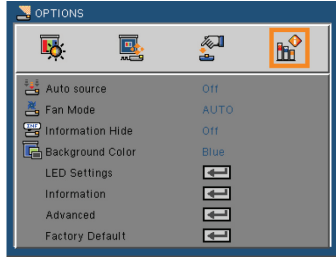
Adjust setting



3D (Off / On)

1. Select Submenu

Select item



2. Enter Submenu



4. Confirm Settings

Confirm selection / setting



3. Adjust Settings



Auto Source (Off / On)



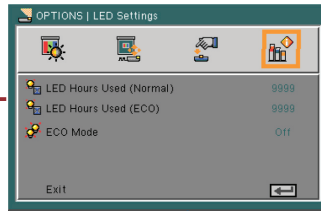
Fan Mode (Off / On)



Information Hide (Off / On)



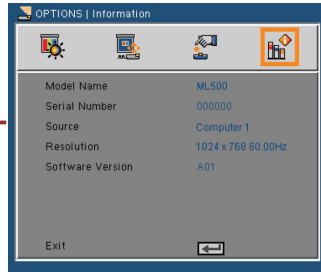
Background Color (Black / Blue)



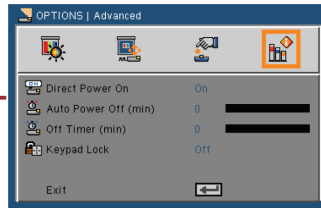
LED Settings



Submenu	Option
LED Hours Used (Normal)	*display current status
LED Hours Used (ECO)	
ECO Mode	Off / On



Information



Advanced



Submenu	Option
Direct Power On	Off / On
Auto Power Off (min)	0-180
Off Timer (min)	0-995
Keypad Lock	Off / On
Factory Default	No / Yes

Timing Table

Mode	Resolution	V-Sync (Hz)
VGA	640 x 480	60
	800 x 600	60
	1024 x 768	60
	1280 x 720	60
	1280 x 800	60
YPbPr, HDMI	480i / 480P	60
	576i / 576P	50
	720P	50 / 60
	1080i / 1080P	50 / 60

<Note>
Video format does not support content with B-Frame function.

The projector uses Pictsel File Viewer to open and view Microsoft® office files and Adobe® PDF files.

Supported Versions

Office Version
Microsoft® Office 95
Microsoft® Office 97
Microsoft® Office 2000
Microsoft® Office 2003
Microsoft® Office 2007
Microsoft® Office 2010

Compatible Document Format

Microsoft® Office Application	File Extension
Word	.doc
	.docx
Power Point	.ppt
	.ppx
Excel	.xls
	.xlsx
Adobe PDF	.pdf



MEDIA FILE SUPPORT LIST: VIDEO

Video

File Type	Video	Resolution	Bit Rate	Frame Rate	Audio Code	Remark
AVI MKV	XVID MPEG4 H.264 M-JPEG WMV3	1080P	20Mbps	30fps	AC3 DTS MPEG1/2/3 PCM ADPCM AAC	No support VC-1 AP H.264 support less than 4 reference frames
TS	H.264	1080P	20Mbps	30fps	AC3 AAC MPEG1/2/3 DTS LPCM	H.264 support less than 4 reference frames
DAT VOB MPG MPEG	MPEG-1	1080P	20Mbps	30fps	MPEG1/2/3 AC3 DTS LPCM	
MOV MP4 3GP	MPEG-4 H.264 H.263	1080P	20Mbps	30fps	AAC AMR PCM ADPCM	H.264 support less than 4 reference frames
RM RMVB	RV3 RV4	720P	5Mbps	30fps	Cook(RA4) AAC(RA9) RACP(RA10)	
WMV	WMV3	1080P	20Mbps	30fps	WMA2 WMA3	No support VC-1 AP

Image			
Image Type (Ext name)	Sub Type	Encode Type	Max Pixels
JPEG JPG	Baseline	YUV400	No Limit
		YUV420	No Limit
		YUV422	No Limit
		YUV440	No Limit
		YUV444	No Limit
	Progressive	YUV400	Width<=10240 & Height <= 6400
		YUV420	
		YUV422	
		YUV440	
		YUV444	
BMP			No Limit

Music		
Music Type (Ext name)	Sample Rate (KHz)	Bit Rate (Kbps)
MP1/MP2/MP3	8-48	8-320
WMA	22-48	5-320
OGG	8-48	64-320
ADPCM-WAV	8-48	32-384
PCM-WAV	8-48	128-1536
AAC	8-48	8-256

If you experience a problem with your projector, please refer to the following information. If a problem persists, please contact your local retailer or service center.

Image Problems

- [?]** No image appears on-screen
 - Ensure the power cord is correctly and securely connected.
 - Ensure the pins of connectors are not crooked or broken.
 - Make sure the projector is switched on.
- [?]** Image is out of focus
 - Adjust the Focus Dial.
 - Make sure the projection screen is between the required distance 20.18 to 213.17 inches (0.5 to 5.4 meters) from the projector. See page 4.
- [?]** Image is too small or too large
 - Move the projector closer to or further from the screen.

Audio Problems

- [?]** No sound
 - During music playback, press **▲** or **▼**.

<Note>

When the projector temperature reaches 85°C, the projector automatically shuts down due to the built-in temperature protection. This is not a malfunction. Let the projector cool down before switching it on again.

APPENDIX

Clause for Office / Document Viewer

The copyright is owned by Pícsel to avoid rights violated by end customer and third parties.

1. All IPR, including but not limited to copyright, in the Pícsel Products is owned by Pícsel or its supplier.
2. The End User may not:
 - make copies of the Pícsel Products or make them available for use by third parties.
 - reverse engineer, disassemble, reverse translate, or in any way decode the Pícsel Products or any copy or part of it in order to derive any source code. Save only as is permitted by any applicable law.
3. Pícsel makes no representations or warranties whether express or implied (by statute or otherwise) relating to the performance, quality, merchantability, or fitness for a particular purpose of the Pícsel Products or otherwise and all such representations or warranties are specifically disclaimed and excluded.
4. Pícsel agrees and acknowledges that Pícsel and the Pícsel Products will not be specifically mentioned in the end user license agreement.

COPYRIGHT / TRADEMARK

Copyright © Optoma Company Limited.
All rights reserved.

Optoma reserves the right to make technical changes. Optoma assumes no liability for damages incurred directly or indirectly from errors, omissions, or discrepancies between the device and this documentation. Other brands or logos are trademarks or registered trademarks of their respective companies.

This device is not intended for use in the direct field of view at visual display workplaces.