

# **Wireless Presentation Adaptor**

## **User's Manual**

(Model Name: WPS-II Wifi Adapter)

Version: 2.0

Date: Aug. 01, 2011

## Table of Contents

<b>1. Overview.....</b>	<b>4</b>
<b>2. Quick Start.....</b>	<b>6</b>
<b>3. Windows Client Utility.....</b>	<b>9</b>
<b>3.1 Starting Program.....</b>	<b>9</b>
<b>3.2 Login.....</b>	<b>10</b>
<b>3.3 Main User Interface.....</b>	<b>11</b>
<b>3.4 Screen Projection.....</b>	<b>11</b>
<b>3.5 Menu Description.....</b>	<b>12</b>
<b>3.5.1 Show Login Code.....</b>	<b>12</b>
<b>3.5.2 Open Admin Web Page.....</b>	<b>13</b>
<b>3.5.3 Searching Server.....</b>	<b>13</b>
<b>3.5.4 Projection Quality.....</b>	<b>14</b>
<b>3.5.5 Projection Source.....</b>	<b>14</b>
<b>3.5.6 Quick connection.....</b>	<b>15</b>
<b>3.5.7 Auto WiFi Connect.....</b>	<b>15</b>
<b>3.5.8 Auto Power Manager.....</b>	<b>16</b>
<b>3.5.9 Hide UI.....</b>	<b>16</b>
<b>3.5.10 Advanced Screen Capture.....</b>	<b>17</b>
<b>3.5.11 Make WPS Token.....</b>	<b>18</b>
<b>3.5.12 Copy Application to desktop.....</b>	<b>19</b>
<b>3.5.13 Hot Key.....</b>	<b>19</b>
<b>3.5.14 About.....</b>	<b>20</b>
<b>3.5.15 Exit.....</b>	<b>20</b>
<b>4. Mac Client Utility.....</b>	<b>21</b>
<b>4.1 Launch Application.....</b>	<b>21</b>
<b>4.2 Main User Interface.....</b>	<b>22</b>
<b>4.3 Screen Projection.....</b>	<b>22</b>
<b>5. Web Management.....</b>	<b>23</b>
<b>5.1 Home Page.....</b>	<b>23</b>
<b>5.2 Download Software.....</b>	<b>24</b>
<b>5.3 Login Web Admin.....</b>	<b>25</b>
<b>5.3.1 System Status.....</b>	<b>26</b>
<b>5.3.2 Network Setup.....</b>	<b>27</b>
<b>5.3.3 OSD Setup.....</b>	<b>29</b>
<b>5.3.4 Projection Setup.....</b>	<b>30</b>
<b>5.3.5 Change Passwords.....</b>	<b>31</b>

<b>5.3.6</b>	<b><i>Reset to Default</i></b> .....	<b>31</b>
<b>5.3.7</b>	<b><i>Firmware Upgrade</i></b> .....	<b>32</b>
<b>5.3.8</b>	<b><i>Reboot System</i></b> .....	<b>33</b>
<b>5.3.9</b>	<b><i>Logout</i></b> .....	<b>34</b>
<b>6.</b>	<b><i>Appendix</i></b> .....	<b>35</b>
	<b><i>Screen Image Background Maker</i></b> .....	<b>35</b>

# 1. Overview

WPS-Dongle is a must-have device for your meeting room! It turns your existing "wired" projector into a "high-end wireless" projector. With the revolutionary Plug-and-Show wireless projection features, WPS makes every of your presentation and meeting efficient and successful.

- High Performance Wireless Projection

With the revolutionary high performance wireless projection, you can easily share the multimedia on the big monitor with friends without cable hassle.

- High Performance Wireless Projection & Audio Projection

With the revolutionary high performance wireless projection with audio, you can easily share the multimedia on the big monitor with friends without cable hassle.

- Easy installation

Download the software from web management page directly, or make a "Plug & Show" token to project wirelessly right away

- Plug & Show

There is an easy tool to make a Plug & Show USB Token on UI menu. Just link your PC/Laptop to WPS (through WLAN or Ethernet), plug the token into a USB port, and in seconds, your screen will be wireless projected to the connected projector!

- Macintosh (Mac) wireless Projection

WPS-Dongle supports Mac client connected and projected wirelessly. By launching the Mac client software which can be downloaded from the web management page, WPS provide the same experience to Mac user to utilize the wireless presentation feature.

- 4-to-1 Split Screen Projection

With this 4-to-1 split screen feature, up to four PC screens can be projected to one projector in the same time. Thus you can easily do side-by-side comparison from four PC / PDAs to increase meeting productivity!

- Smartphone wireless projection

WPS-Dongle supports MobiShow function for windows mobile 5/6 system. By launching MobiShow utility, MobiShow brings your mobile screen to big screen and which can play photos and PtG files stored in your mobile phone for presentation.

- Change Standby Screen

You can use the application “Screen Image Background Maker” to change the Splash Screen. Design the image with message you would like to present, upload it through web control page, and you could have customized starting page.

- AP Client Mode

You can enable the AP-Client Mode function to let WPS join the existing Access Point through Wi-Fi. This feature provides the flexibility of wireless network deployment in enterprise environment.

- Support PoVGA

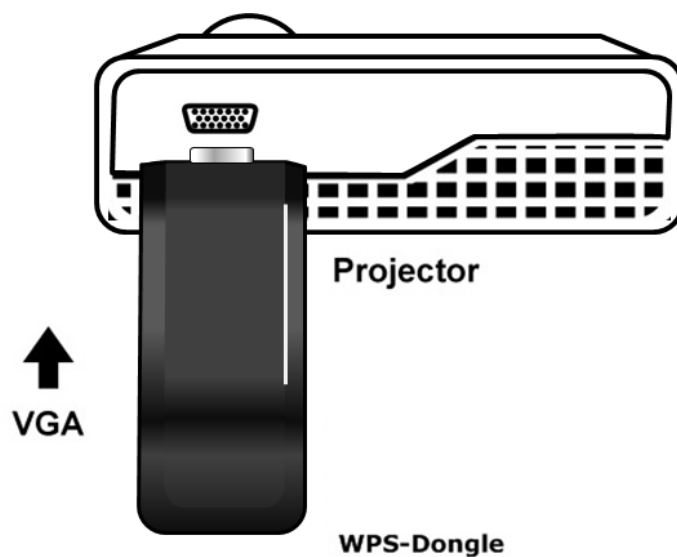
Connect WPS-Dongle to a projector supporting PoVGA, the power can be supplied directly from the VGA port without external power adapter.

## ➤ Features

- Support Windows Win7, Vista, XP.
- Support Macintosh (Mac) version 10.5 and above.
- Plug and Show! No installation required ... just plug in the accompanied token to a USB port, and hassle free presentation can be started in seconds.
- 4-to-1 split screen projection! Turn one projector into four, increase meeting productivity right away.
- Smartphone wireless projection! PC-less stylish presentation becomes possible!
- Provide session security login, wireless WEP/WPA key and Gatekeeper function to protect presentation contents and keep good security to office networks.
- Support High Performance screen projection
- Changeable Splash Screen image!
- SNMP Manager! To manage the devices easily
- AP-Client Mode! Deploy wireless network in enterprise environment easily
- Support PoVGA.

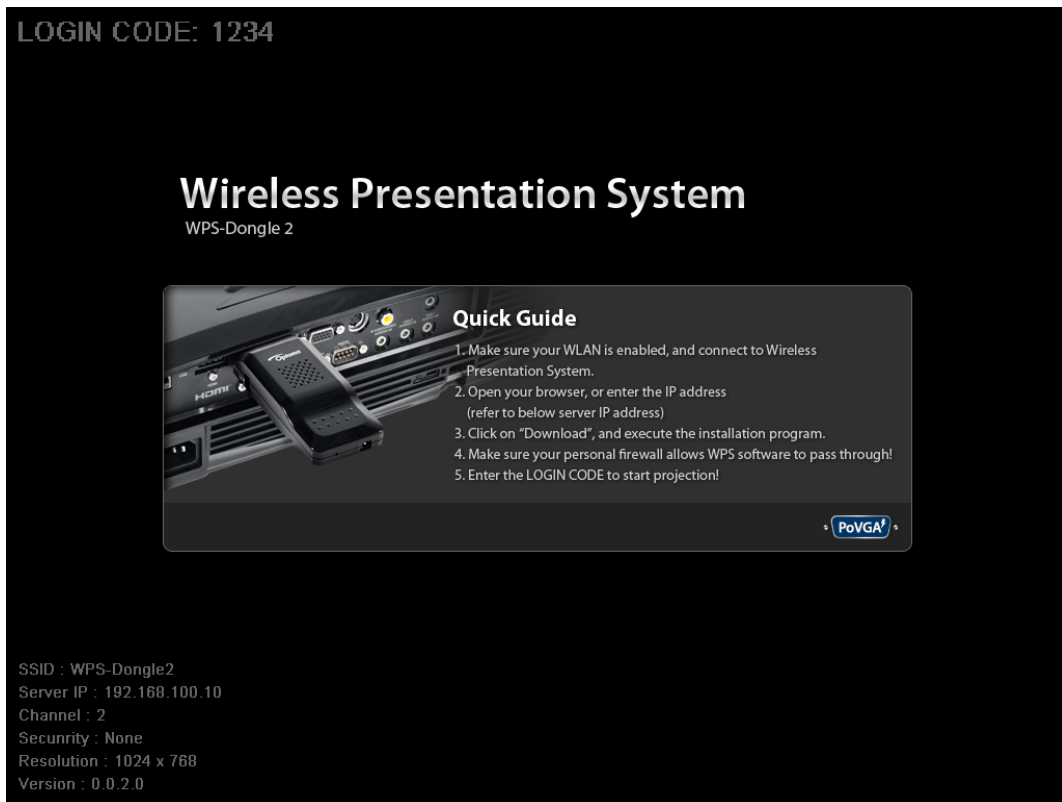
## 2. Quick Start

- 1) Please plug WPS-Dongle into projector VGA port, and turn on the projectors power to use.



2) Turn on WPS Dongle.

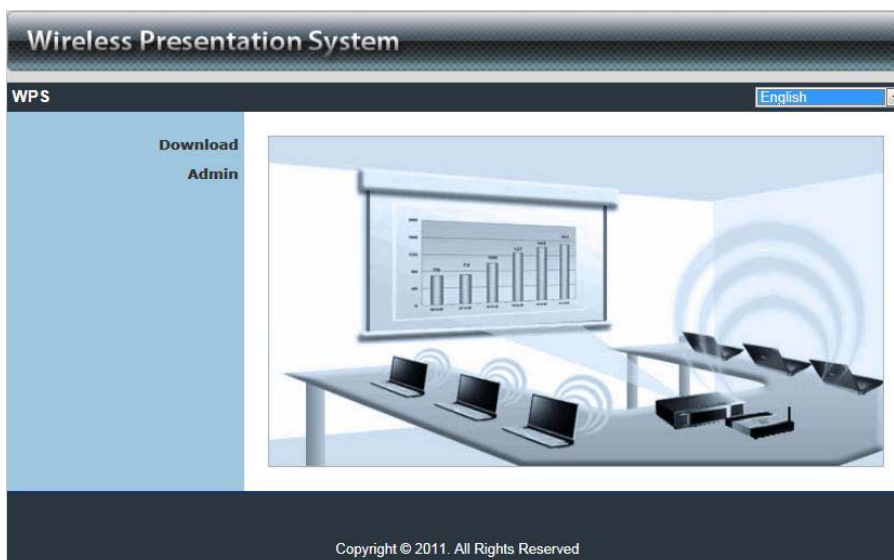
- ◆ When Projector shows the default menu on the screen as below, it indicates the WPS dongle is ready.



3) Make sure your PC WLAN is enabled already, and connect your PC with WPS Dongle.

4) Open your browser and enter the IP address to access the WPS web home page.

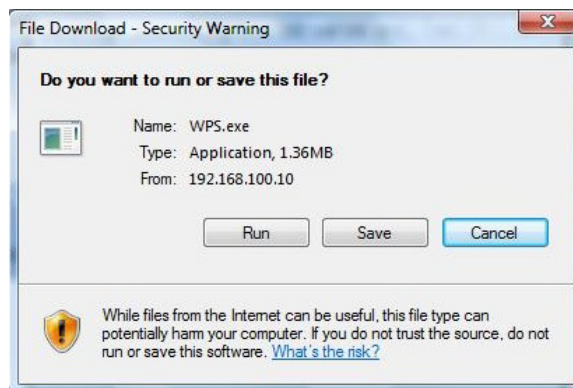
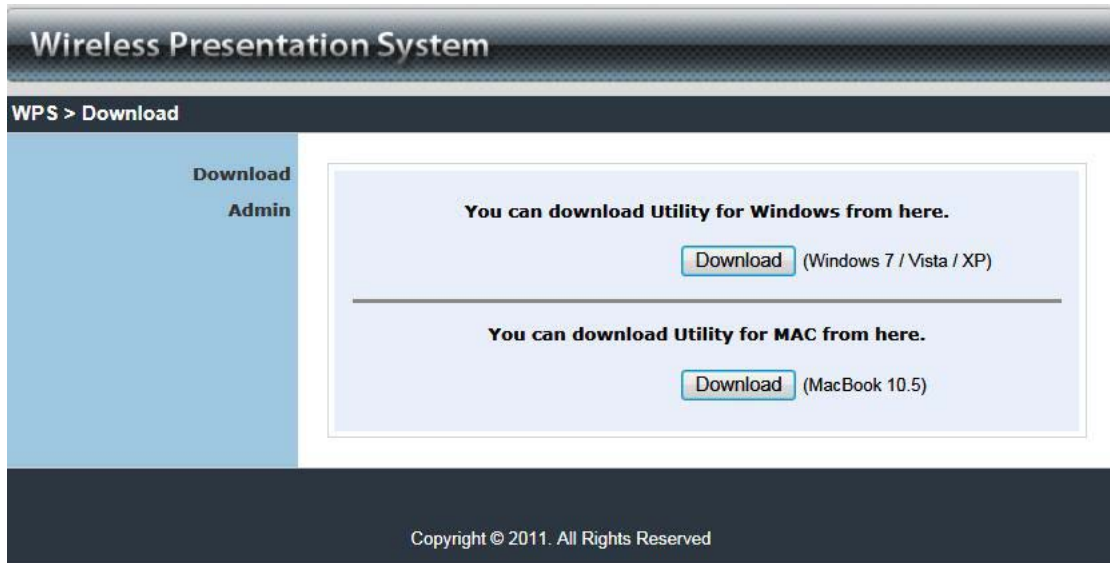
- ◆ The default IP address of WPS is **192.168.100.10** or refers to the IP address shown on the left corner of projector screen.



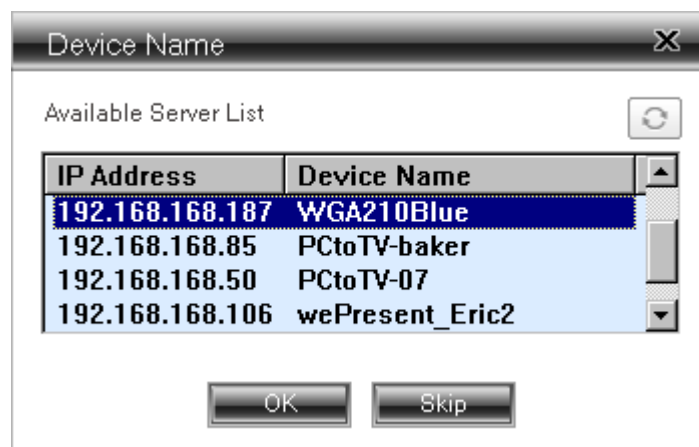
5) Download the client software. Please select the " Win7 / Windows Vista / XP "

or "MAC" and execute the installation program.

After installing the program, you will see the WPS shortcut on the PC screen.



- 6) Make sure your personal firewall allows WPS software to pass through.
- 7) Select device that your want to projection



- 8) Enter the **LOGIN CODE** , you can see the login code on the projector screen.





9) Click the “Play” button to start projection!



## 3. Windows Client Utility

### 3.1 Starting Program

After you download WPS Windows program via web page successfully, then follow below steps to start.

1) Click WPS icon to execute the program.



2) Program start to search for WPS dongle automatically,

3) If WPS dongle found then “Login Code” dialog dongle will be pop up on the PC screen.

- Searching for WPS dongle



- WPS dongle is founded and enter login code to start.

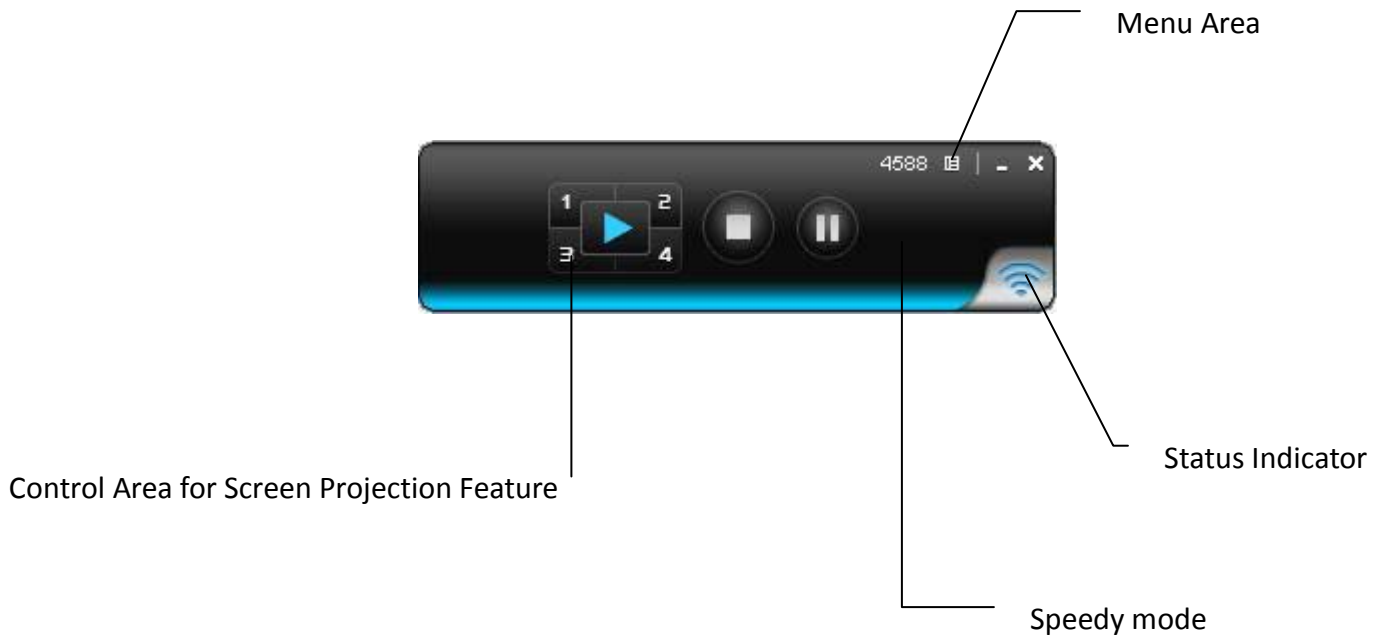


### 3.2 Login

- 1) After "Login Code" dialog dongle shown, enter login code to start presentation.
- 2) You can see the login code shown on the projector screen.



### 3.3 Main User Interface










### 3.4 Screen Projection

Click the “Play” button for full or split screen, you can project the main screen on to the display immediately, click the “Pause” button, you can freeze you projection screen, click the “Stop” button to stop projecting your screen, by clicking speedy mode button, the projection will enter speedy mode for faster projection.

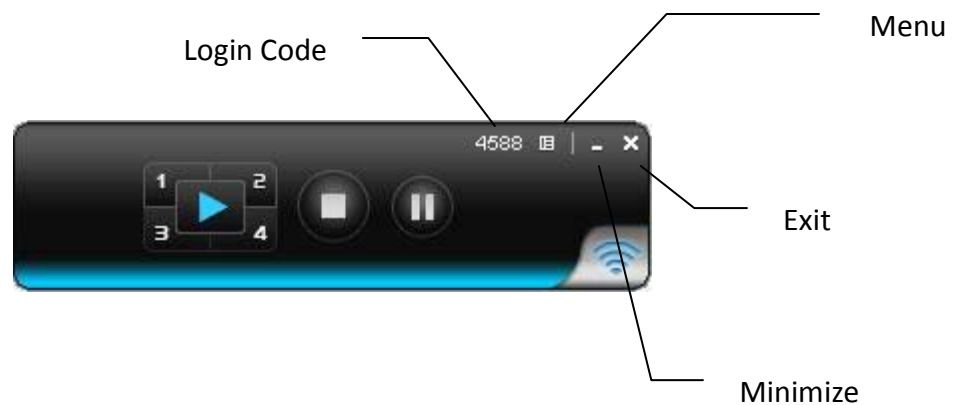
- \*. 4-1 function will be disabled in speedy mode.
- \*. To enable audio projection, you have to install provided audio driver first.



Button	Description
	Full Screen projection
	Project to Split #1
	Project to Split #2

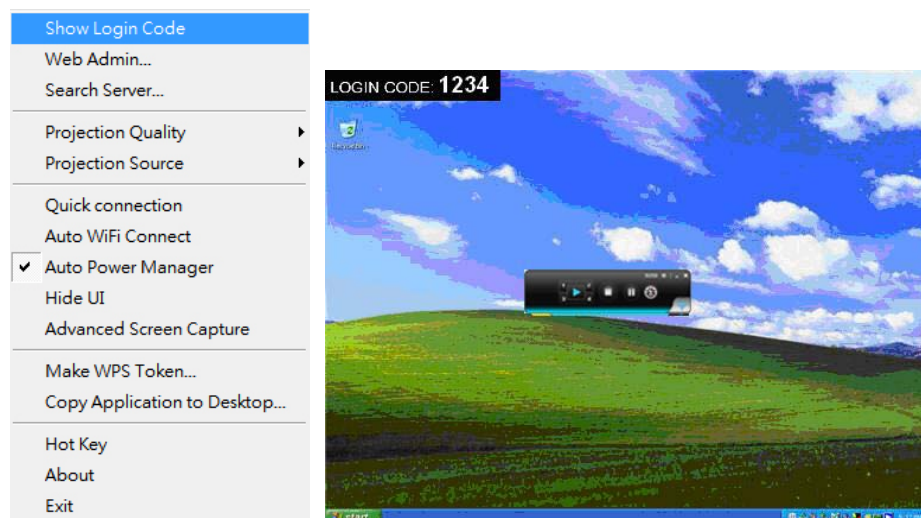
	Project to Split #3
	Project to Split #4
	Stop projecting
	Pause projecting

### 3.5 Menu Description




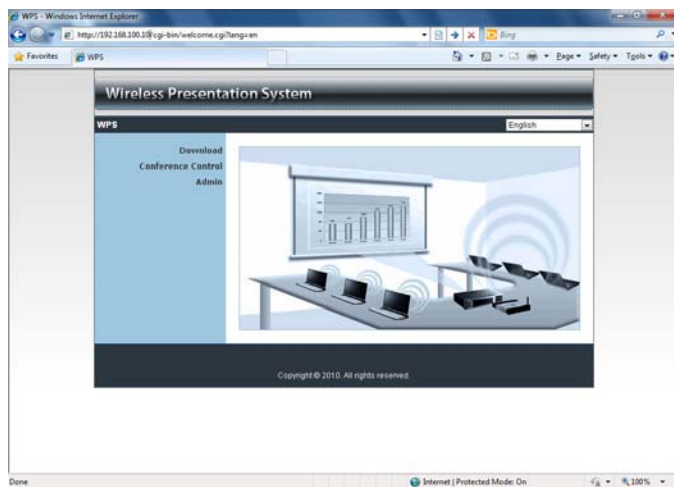
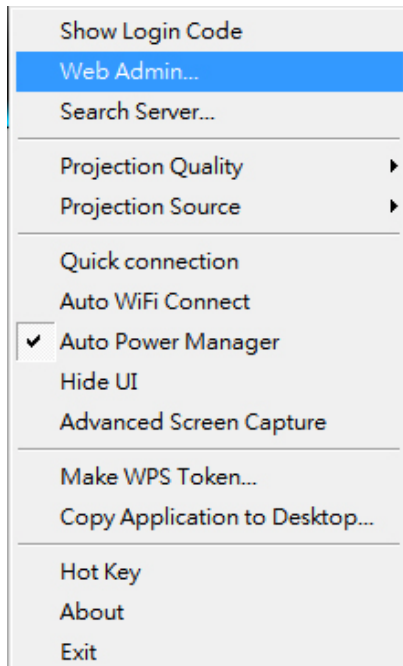
#### 3.5.1 Show Login Code

Click **“Show Login Code”**, it will display the login code on the right-upper of desktop and close it automatically after 10 seconds. You can also click on the area to close this window manually.



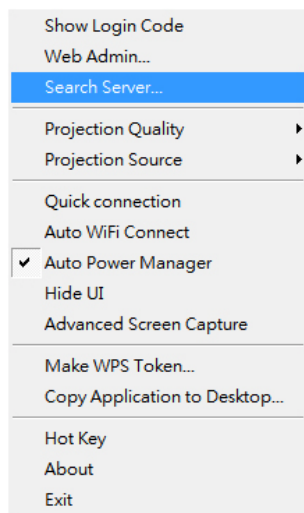
### 3.5.2 Open Admin Web Page

Click  to open function menu and select **“Web Admin”** management web page. The web page detailed functions will be described on next chapter.



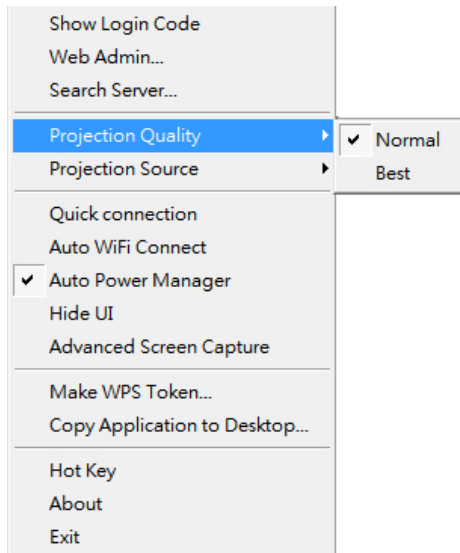
### 3.5.3 Searching Server

Click **“Search Server”** to re-search the WPS again.



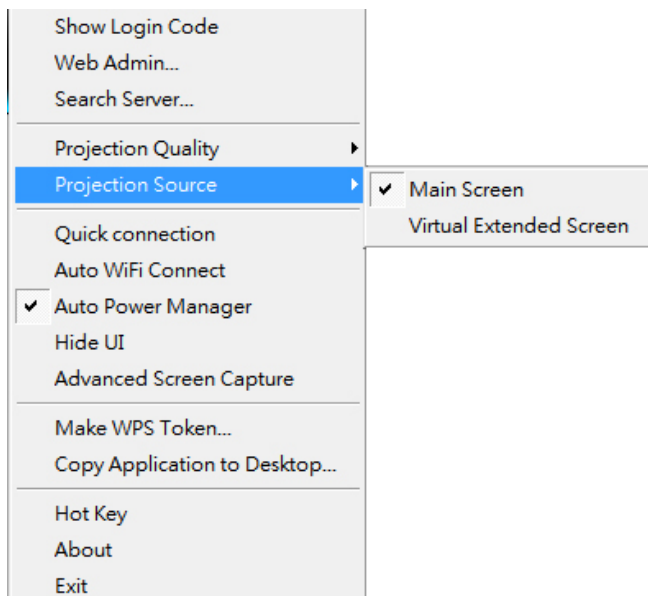
### 3.5.4 Projection Quality

Click the “**Projection Quality**”, you can select to project the Normal or Best for projection wording quality,



### 3.5.5 Projection Source

Click the “**Projection Source**”, you can select to project the main screen of desktop or the virtual extended screen.



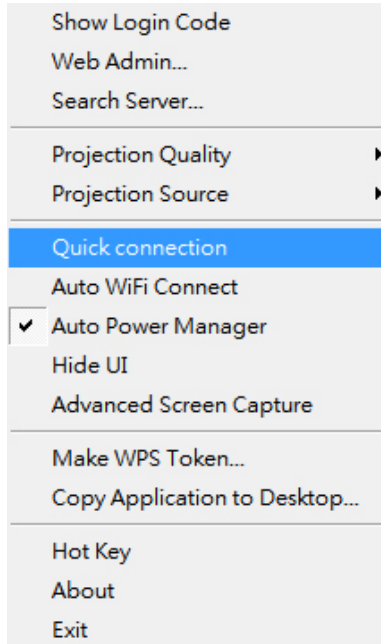
P.S: Virtual Extended Screen option

You need to install “VDD.exe” driver first which is stored in the USB token.

**Note:** Unsupported Win7 starter.

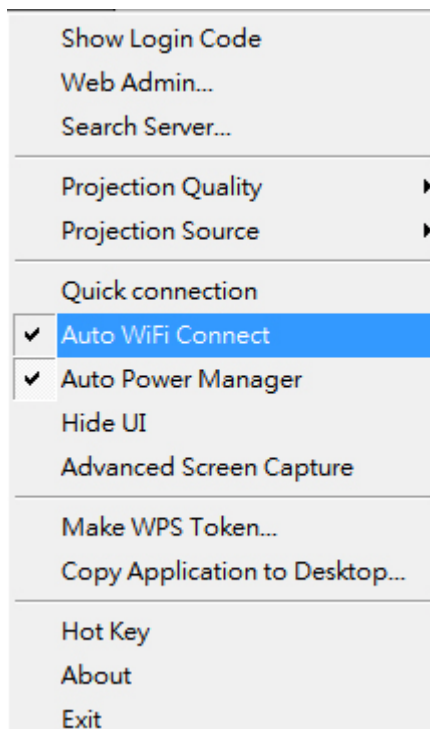
### 3.5.6 Quick connection

Click **“Quick connection”** to enable connect the last connection directly



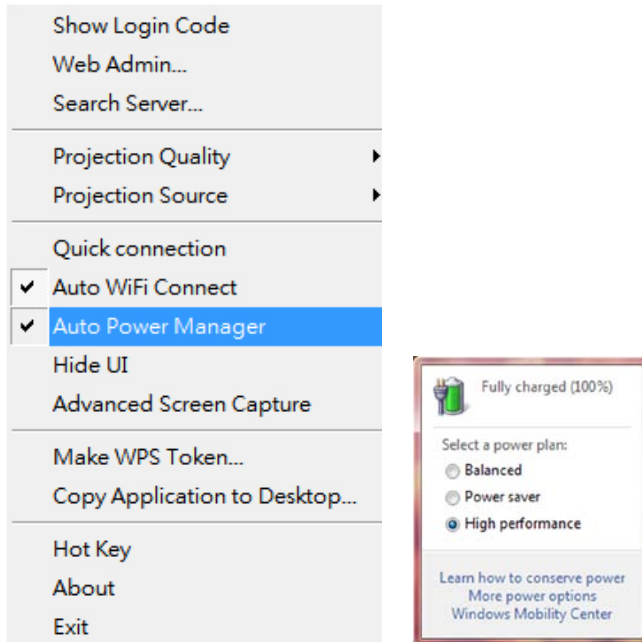
### 3.5.7 Auto WiFi Connect

Click **“Auto WiFi Connect”** to enable the auto WiFi discovery and connection function for quick wireless set up.



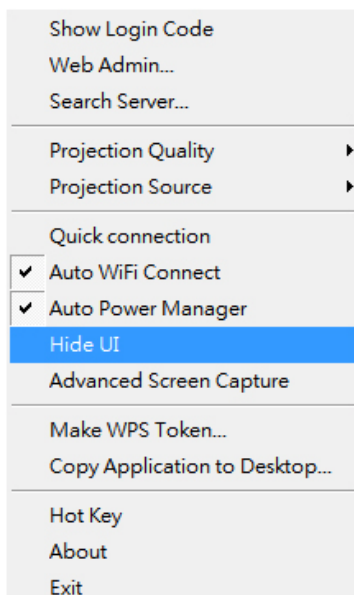
### 3.5.8 Auto Power Manager

To make the highest projection performance, application will turn the PC's windows power scheme from current settings to "highest performance", however, you can click the "Auto Power Manage" to enable or disable this function and restore you power scheme immediately.



### 3.5.9 Hide UI

Click the "Hide UI", you can choose to hide or display the application control panel from projection screen.

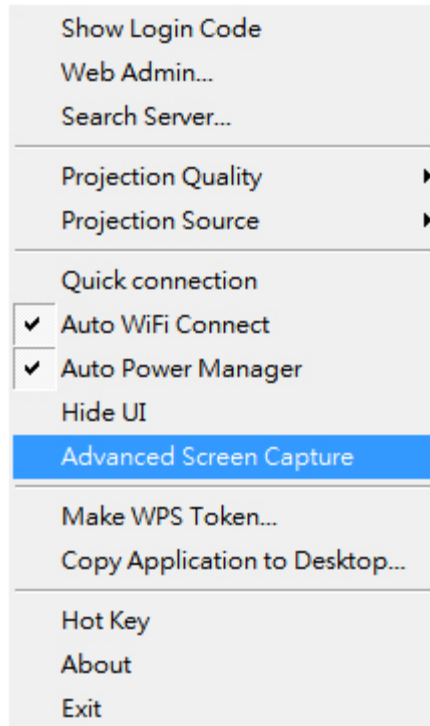




### 3.5.10 Advanced Screen Capture

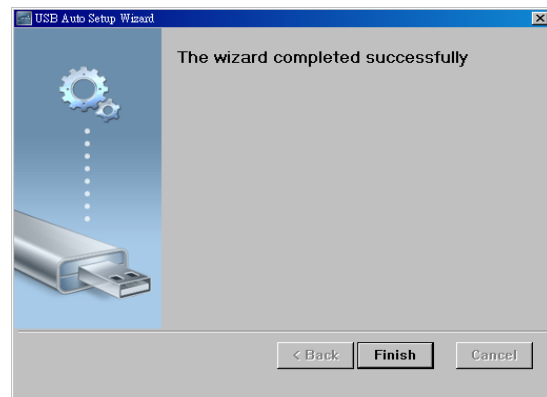
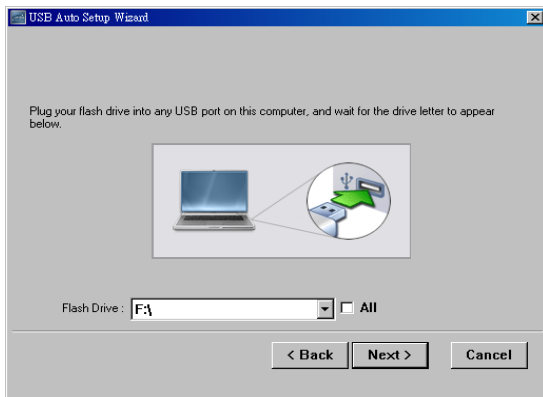
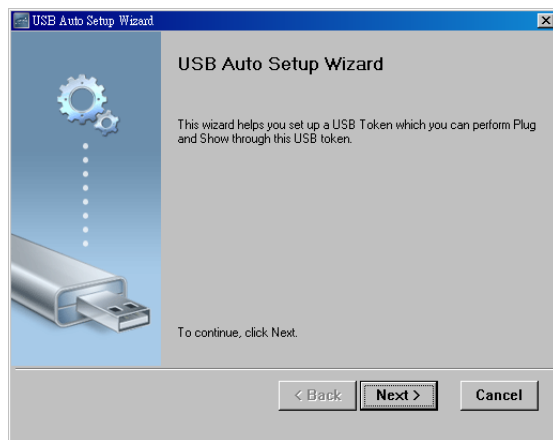
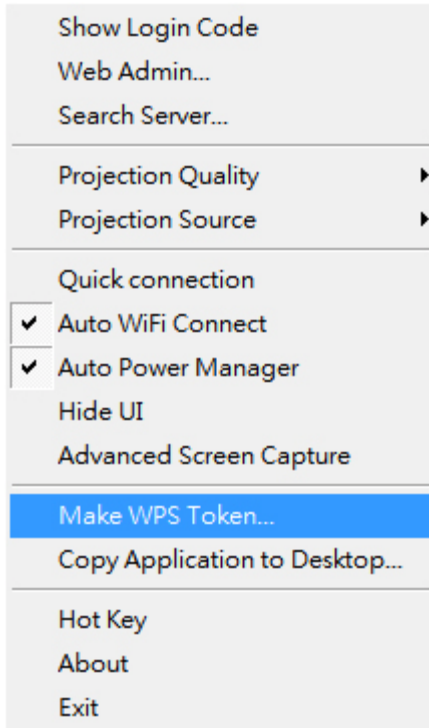
Click the “**Advanced Screen Capture**”, you will be able to see tip windows and other layered windows (include the main UI) on the connected display.

However, the mouse cursor may blink from time to time when you are projecting your PC screen!



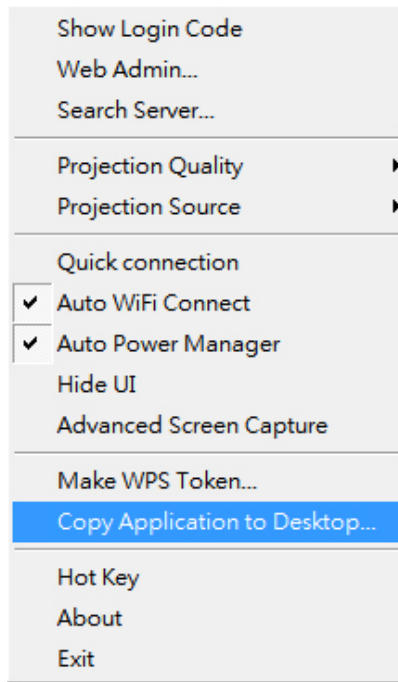
### 3.5.11 Make WPS Token

Click “**Make WPS Token**” to make a USB WPS Token, you can insert a USB thumb drive and follow the wizard to make the Token.



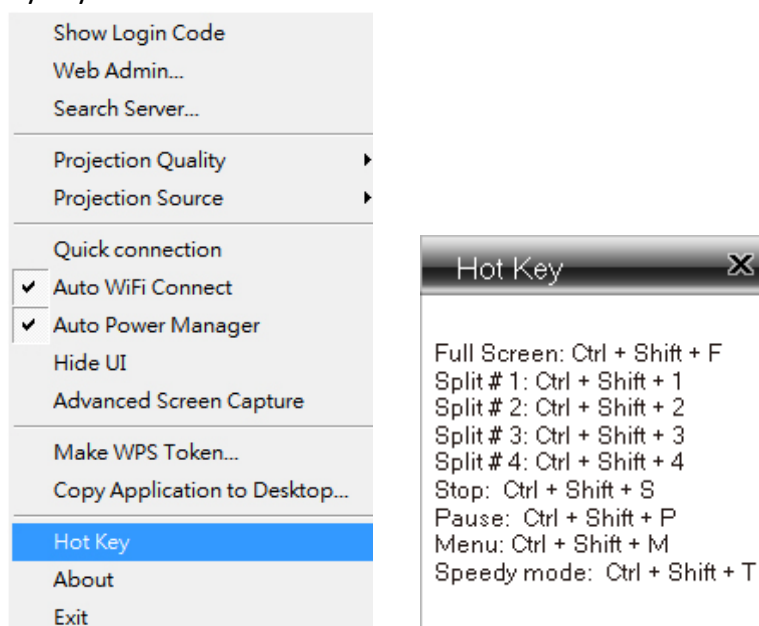
### 3.5.12 Copy Application to desktop

Click the **“Copy Application to desktop”**, it will copy the application to your desktop immediately even you don’t have the system privilege



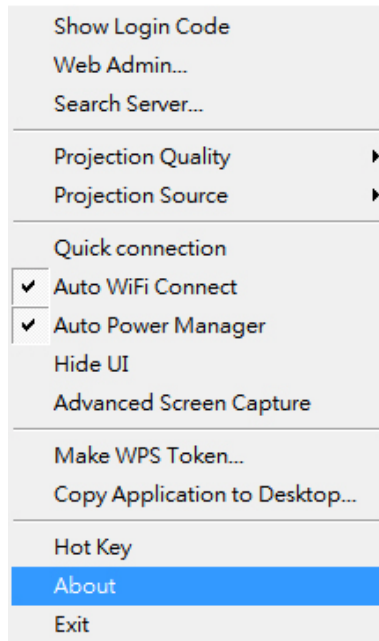
### 3.5.13 Hot Key

Click **“Hot Key”** to show Hot Key guide. You can use hot key to control the projection by keyboard.



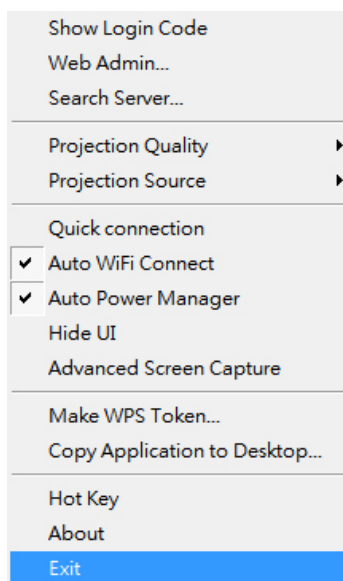
### 3.5.14 About

Click **“About”** to show system information. It includes product model name, Client version, IP address and other information.



### 3.5.15 Exit

Click **“Exit”** to exit this application. It will stop current playing status and close the application immediate.



## 4. Mac Client Utility

### 4.1 Launch Application

- 1) Enable your WiFi and connect to WPS device.
- 2) Execute WPS client software for Mac.



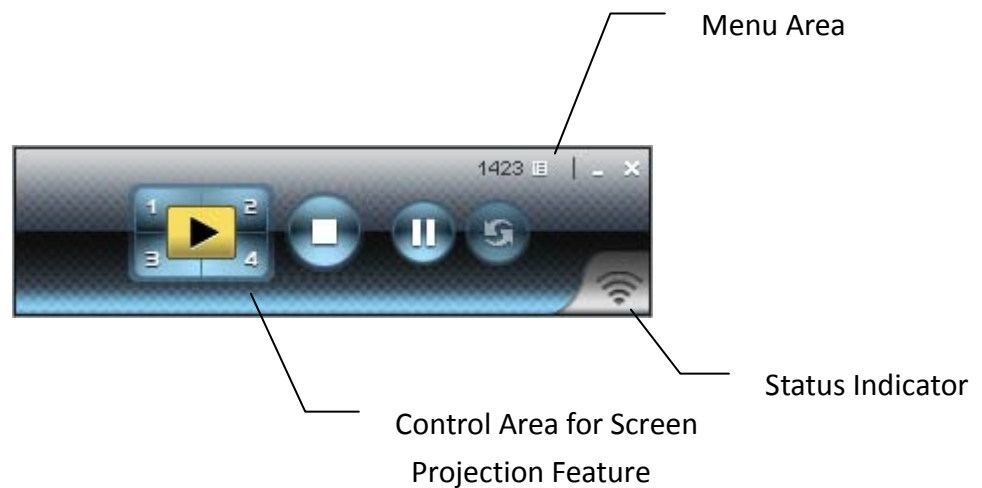
- 3) Launch WPS software and enter the login code.



#### 4) Start Projection.



### 4.2 Main User Interface



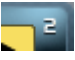







### 4.3 Screen Projection

Click the “Play” button for full or split screen, you can project the main screen on to the display immediately, click the “Pause” button, you can freeze you projection

screen, and click the “Stop” button to stop projecting your screen.



Button	Description
	Full Screen projection
	Project to Split #1
	Project to Split #2
	Project to Split #3
	Project to Split #4
	Stop projecting
	Pause projecting
	Refresh Screen

## 5. Web Management

### 5.1 Home Page

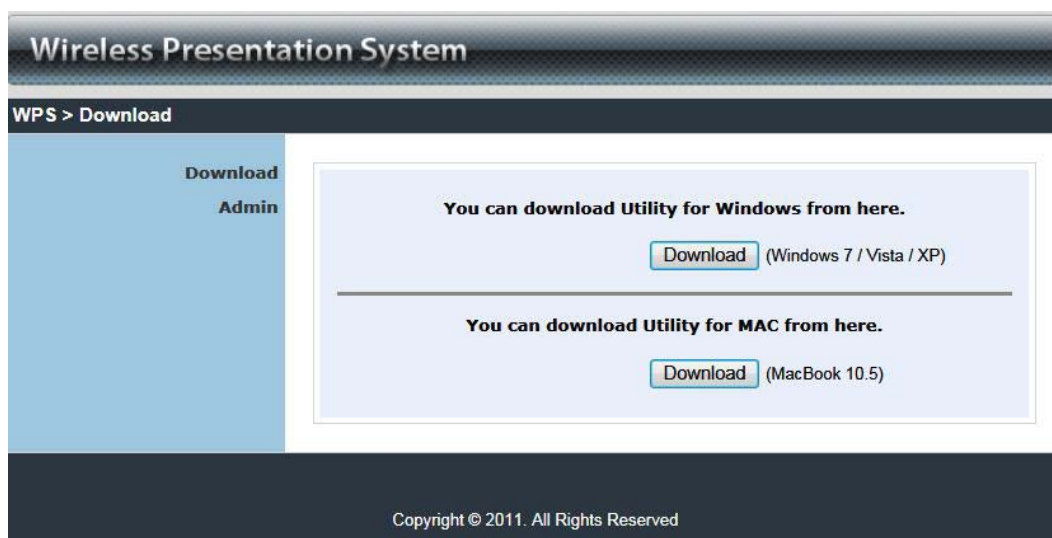
1. Make sure your PC connects to WPS-Dongle successfully.
2. Open your browser, it will enter WPS home page automatically.
3. If not, enter your IP address on the browser, you can see the IP on the projector screen.

4. The default IP is 192.168.100.10



## 5.2 Download Software

1. Select “Download software” function.
2. Please select the “Win 7 / Windows Vista / XP ” or “Windows Mobile 5/6” or “Mac Utility” and execute the installation program.
3. Follow Installation Wizard instructions to proceed until the installation process complete.
4. If pop up “**Windows Security Alert**” because Windows firewall block this program. You just press “**Unblock**” button to continue installation.
5. Once installation complete, a utility shortcut come out on the screen.







### 5.3 Login Web Admin



1. Click [**Admin**] and then enter password to login web page.
2. The password default value is "admin".

## 5.3.1 System Status

System Status	
Model Name	WPS-Dongle 2
Versions	
Firmware Version	1.0.0.0
Network Status	
IP Address	192.168.0.104
Subnet Mask	255.255.255.0
Default Gateway	192.168.0.1
Wireless MAC Address	00:12:5F:02:B9:0C
Connection Status	
Projecting Status	Waiting for Projecting
Total Users	0

Copyright © 2011. All Rights Reserved

Click [**System Status**], shows current system status.

**Model Name:** Product model name

**Versions:**

1. **Firmware version no.:** Product firmware version number.

**Network Status:**

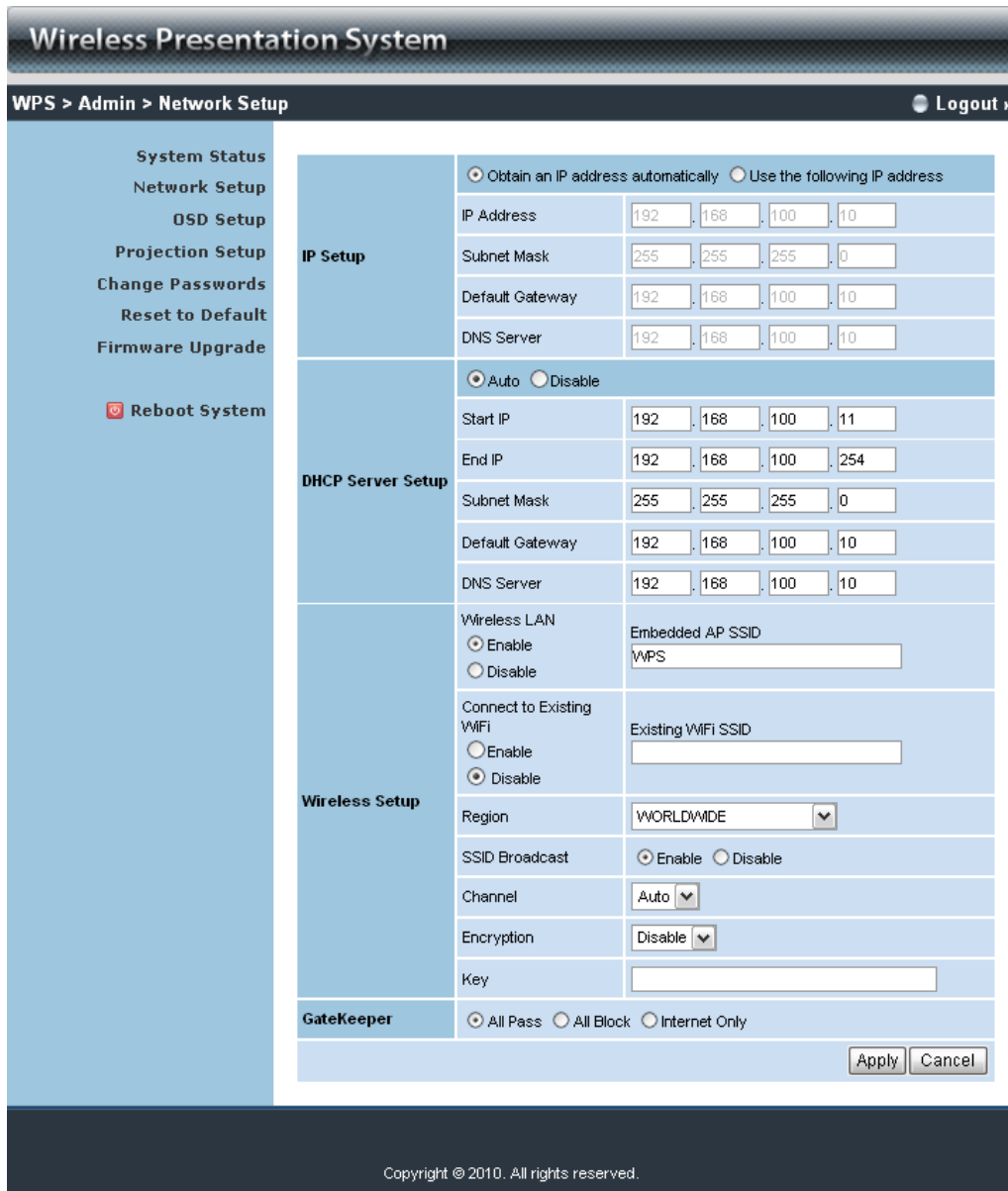
1. **IP address :** IP address of WPS device.
2. **Subnet Mask :** subnet mask
3. **Default Gateway :** default gateway
4. **Wireless MAC address :** wireless MAC address
5. **Wire MAC address :** wire MAC address

**Connection Status:**

1. **Projecting status:** which is “Waiting for projecting” or “Projecting”
2. **Total Users:** This shows how many users are logged into WPS dongle.

## 5.3.2 Network Setup

There are many kinds of operating configurations as below.



### < Auto-Configuration Network Setup >

The default setting of the WPS dongle is DHCP client. When the WPS dongle is connected to a LAN that already has a DHCP server present, the WPS dongle takes an IP address assigned to it by the server. When the WPS dongle is connected to a LAN that does not have a DHCP server, the WPS dongle becomes the DHCP server in the network.

### < IP Setup >

- ◆ You can select “obtain IP address automatically” or “Use the following IP address”

- ◆ IP Address: The default value is 192.168.100.10.
- ◆ Subnet Mask: The default value is 255.255.255.0
- ◆ Default Gateway: The default value is 192.168.100.10
- ◆ DNS Server: The default value is 192.168.100.10

#### <DHCP Server Setup>

- ◆ You can select “auto(Enable/Disable DHCP Server” or “Disable”)
- ◆ Start IP: The start IP address of DHCP Server.
- ◆ End IP: The end IP address of DHCP Server
- ◆ Subnet Mask: The default value is 255.255.255.0
- ◆ Default Gateway: The default value is 192.168.100.10
- ◆ DNS Server: The default value is 192.168.100.10

#### < Wireless Setup>

- ◆ Wireless LAN: The default value is “Enable”.  
Embedded AP SSID:SSID string ,max. Length is 32 bytes.
- ◆ **Connect to Existing AP:** This is “AP client” mode feature. By this feature you can join others Access Point via wireless.  
First, enter the existing AP’s SSID and require security key in “**Existing AP SSID**” and “**Key**”, then reboot your system. After these steps, WPS will connect to this AP by wireless automatically.  
**Note:** The default value of AP client mode is “Disable”, and LAN function will be disabled during AP client mode.
- ◆ Region: default value is “Worldwide”.
- ◆ SSID Broadcast: The default value is “Enable”
- ◆ Channel: to set fixed channel or Auto. The “Auto” means after power on WPS, it will scan all of wireless channel and select clear one channel automatically.
- ◆ Encryption: you can select “Disable” or one of WEP/WPA/WPA2 64bit or 128bit in ASCII or HEX string.
- ◆ Key: If Encryption is enabled, you have to set key value according to the encryption mode you selected.

<**Apply** >: press button to select this mode.

<**Cancel**>: press button to abort action.

<**Back**>: Back to Operating mode main menu.

### 5.3.3 OSD Setup

Wireless Presentation System

WPS > Admin > OSD Setup Logout »

**System Status**  
**Network Setup**  
**OSD Setup**  
**Projection Setup**  
**Change Passwords**  
**Reset to Default**  
**Firmware Upgrade**  
**Reboot System**

**Set Background**

Background Image: Default

Restore Initial

File Name:

Image File Upload

The image file to be uploaded must be created in advance by using the projection screen image creation tool.

Disable  Enable  Some Information

Apply Cancel

Copyright © 2011. All Rights Reserved

Click [**OSD Setup**] button, to change OSD standby image.

- ◆ **<Restore Initial>**: Restore to default OSD standby image.
- ◆ **<Image File Upload>**: Upload the customized OSD standby image. (You need to convert the image to system defined format using provided IB Maker utility which is stored in the USB token.)

Click [**Screen information**] button, to change OSD information display.

- ◆ **<Disable>**: only login code (if it has)
- ◆ **<Enable>**: all information, login code, IP, SSID, Resolution, Channel, Version, Security
- ◆ **<Some Information>**: IP, SSID

## 5.3.4 Projection Setup

The screenshot displays the 'Wireless Presentation System' administration interface. The breadcrumb navigation shows 'WPS > Admin > Projection Setup' and a 'Logout »' link. A left-hand menu lists various system management options: System Status, Network Setup, OSD Setup, Projection Setup (highlighted), Change Passwords, Reset to Default, Firmware Upgrade, and a Reboot System button with a power icon. The main content area is titled 'Projection Setup' and contains two configuration fields: 'Resolution' with a dropdown menu set to 'XGA (1024X768)', and 'Login Code' with three radio button options: 'Disable', 'Random' (which is selected), and 'Use the following code' followed by an empty text input field. 'Apply' and 'Cancel' buttons are located at the bottom right of the configuration area. The footer of the interface reads 'Copyright © 2011. All Rights Reserved'.

Click [**Projection Setup**] button

- ◆ **<Resolution>**:  
VGA: XGA(1024\*768), WXGA(1280x800) ,WXGA (1280\*768) and SVGA(800\*600). The default value is XGA.
- ◆ **<Login Code>**: You can select “Disable”, “Random”, or “Use the following code” to set a specified 4-characters Number.
- ◆ **<Apply>** : Confirmation and Save modifications
- ◆ **<Cancel>**: Cancel all the modifications

### 5.3.5 Change Passwords

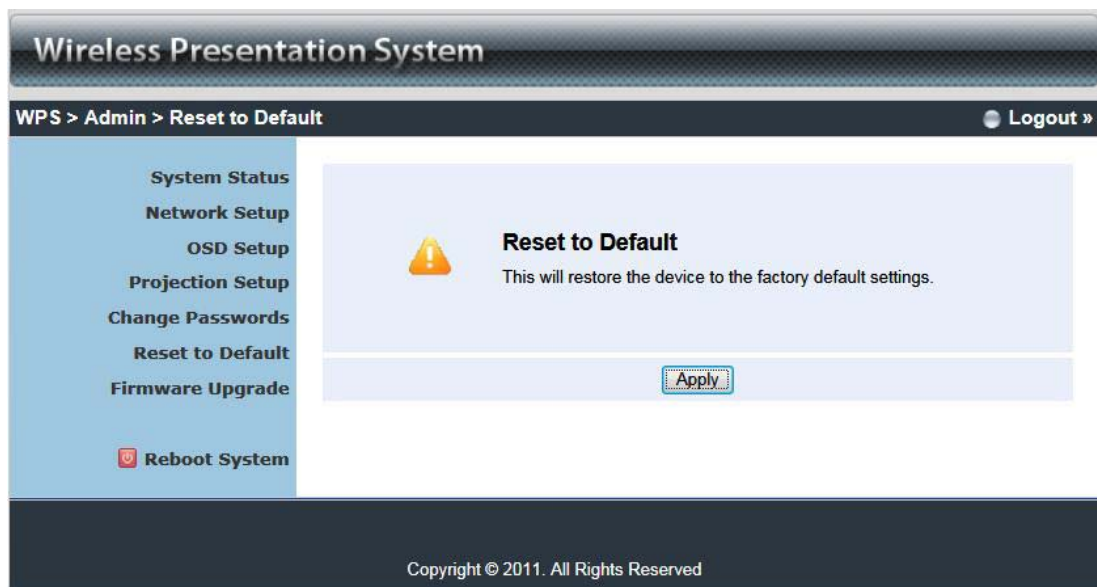


Click [**Change Password**] button, to change password value.

The length of password is up to 8 characters.

- ◆ **<Enter New Password>**: enter new password you want to change for each category.
- ◆ **<Confirm New Password>**: double confirm new password.
- ◆ **<Apply>**: Confirmation and Save modifications.

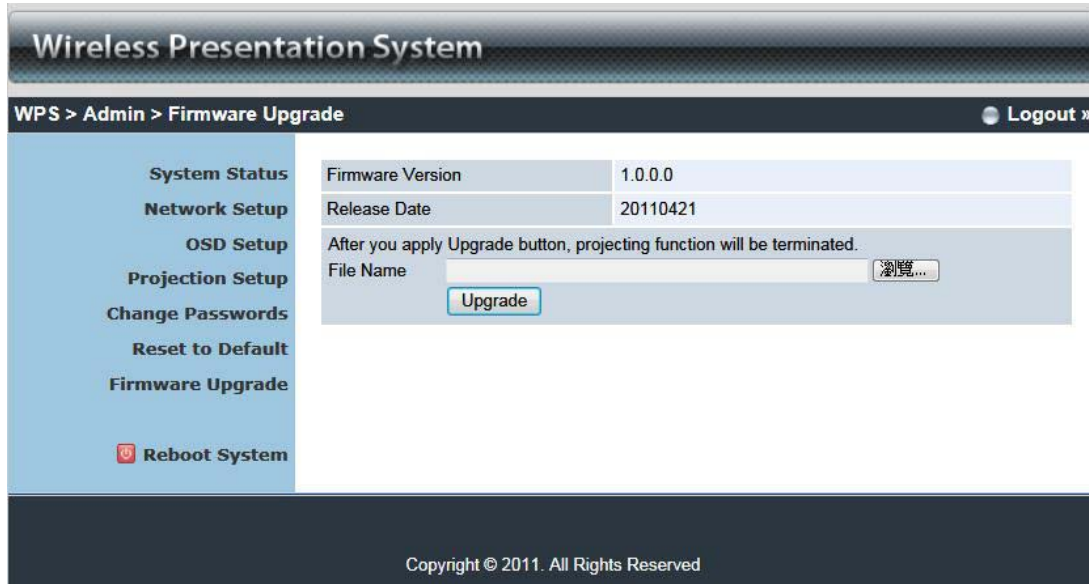
### 5.3.6 Reset to Default



Click **[Reset to Default]** button to restore factory default settings.

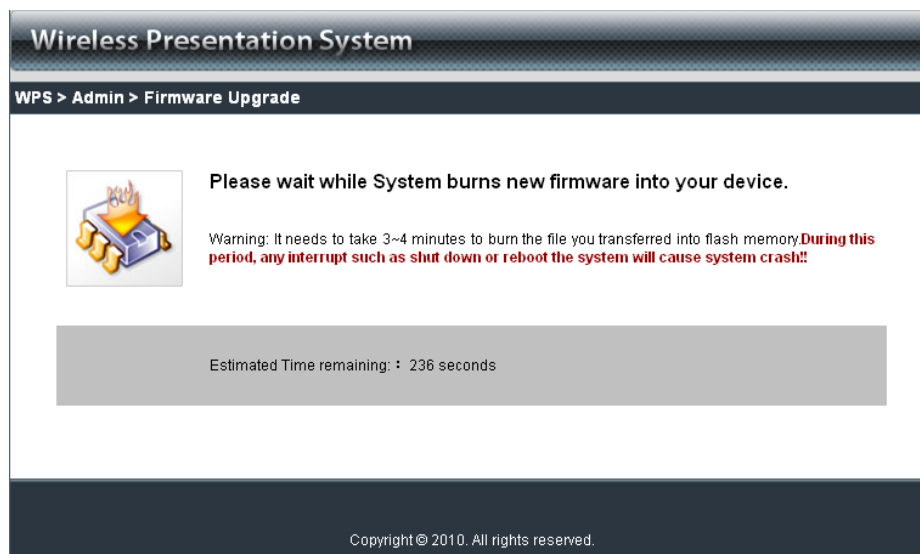
**<Apply>**: Confirmation and action.

### 5.3.7 Firmware Upgrade




Click **[Firmware Upgrade]** button to upgrade firmware.

1. Firstly, you have to get latest firmware image file from your vendor.
2. Click **<Browse>** to specify file name you want to upgrade.
3. Click **<Upgrade>** to start.
4. A warning message shown and count down counter on the screen.
5. After a few minutes, a completed message is shown on the screen.
6. Restart WPS dongle to take effect.

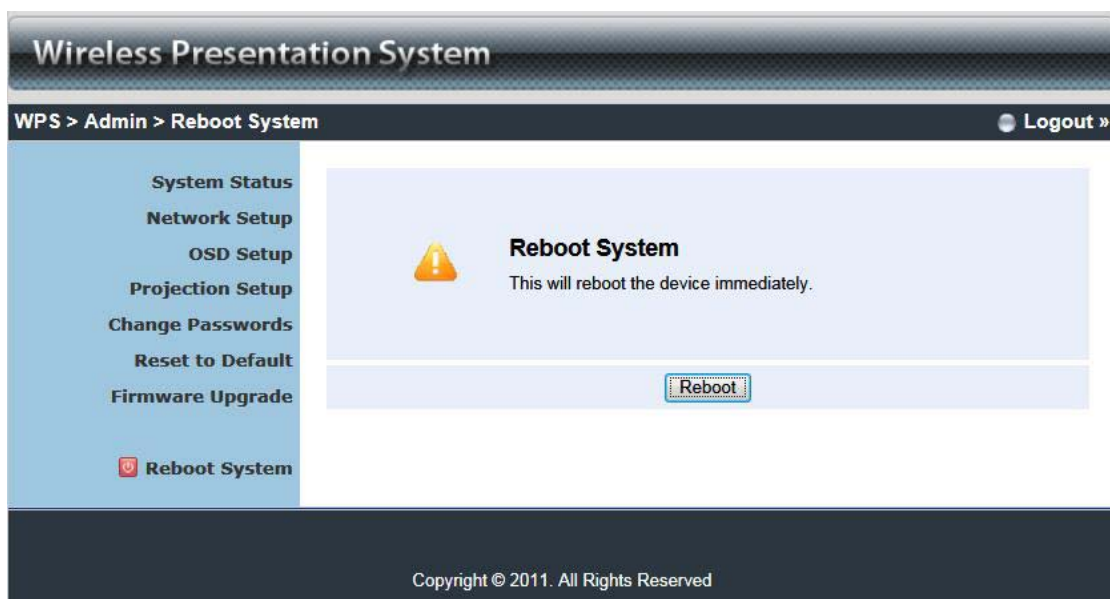






 **Warning:** Don't power off WPS while firmware upgrade in progress, otherwise will cause your Dongle to stop working and will need to be returned to your vendor for firmware updating.

### 5.3.8 Reboot System



Click [**Reboot System**] button, to restart system

- ◆ **<Reboot>**: reboot system automatically.

## 5.3.9 Logout

Wireless Presentation System

WPS > Admin > System Status [Logout »](#)

<b>System Status</b>	<b>Model Name</b>	WPS-Dongle 2
<b>Network Setup</b>	<b>Versions</b>	
<b>OSD Setup</b>	Firmware Version	1.0.0.0
<b>Projection Setup</b>	<b>Network Status</b>	
<b>Change Passwords</b>	IP Address	192.168.0.104
<b>Reset to Default</b>	Subnet Mask	255.255.255.0
<b>Firmware Upgrade</b>	Default Gateway	192.168.0.1
<b>Reboot System</b>	Wireless MAC Address	00:12:5F:02:B9:0C
	<b>Connection Status</b>	
	Projecting Status	Waiting for Projecting
	Total Users	0

Copyright © 2011. All Rights Reserved

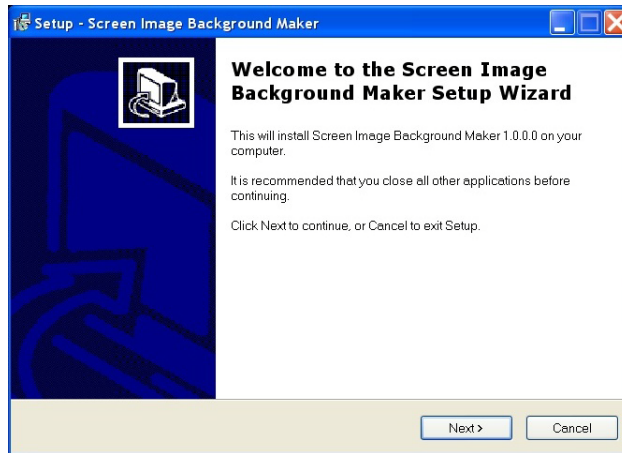
## **6. Appendix**

# **Screen Image Background Maker**

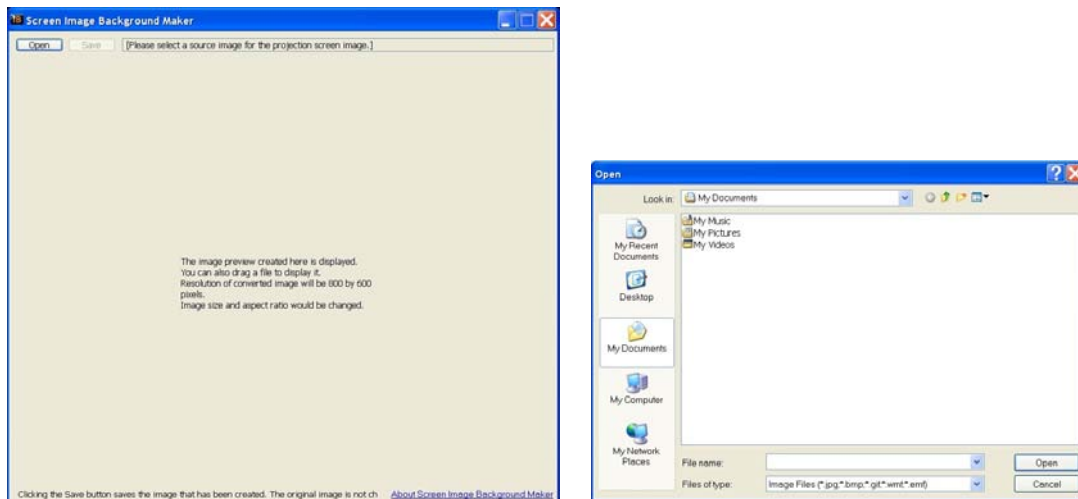
## **Quick Installation Guide**

Version: 1.00

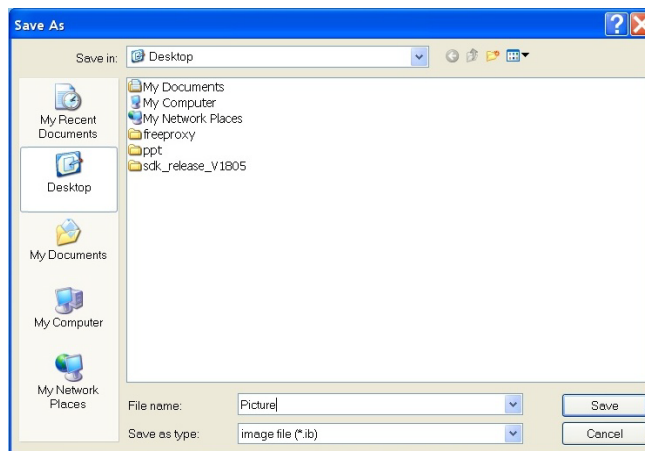
- 1) Run the “Screen Image Background Maker” and follow the wizard to convert the image file.



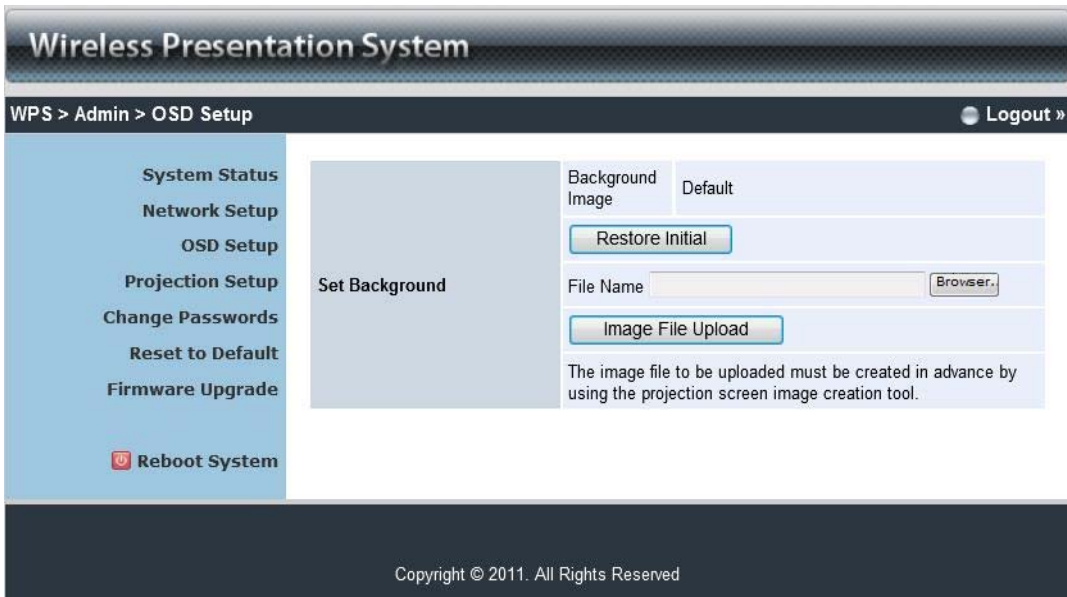
- 2) Press “Open” to select a file to convert this image for background use.



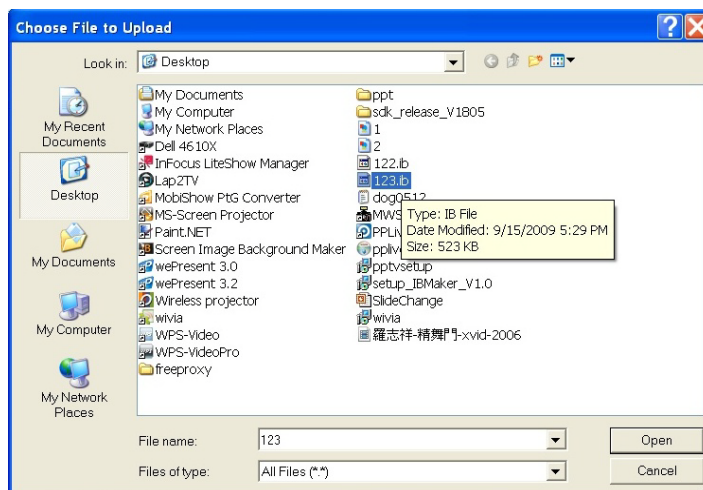
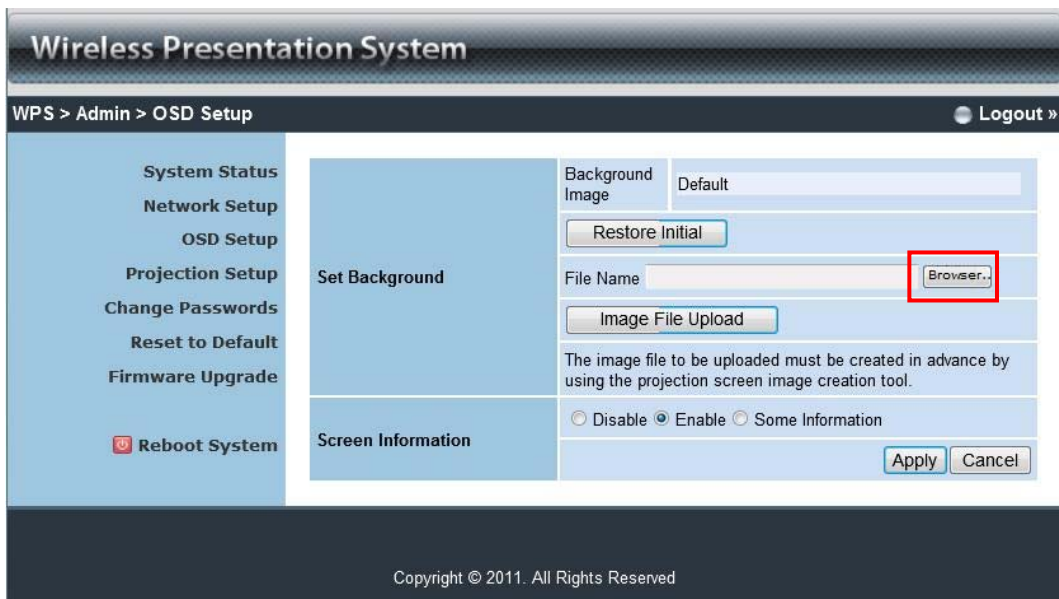
- 3) Press “Saver” to save this file.(\*.ib)



4) Please connect to WPS webpage, and then connect to OSD setup page.



5) Press "Browser" to choose the \*.ib file.



- 6) Press “image file upload” to upload your background image.  
Then it will show the message as below.



**Note:** You may find “Screen Image Background Maker” in the USB Token.