

Panasonic

ideas for life

PT-DZ21K Series

3-Chip DLP™ Projectors

PT-DZ21K
PT-DS20K
PT-DW17K

**20,000 lm* of Brightness and
Rich Features from an
Extraordinarily Compact Body**

* 17,000 lm for the PT-DW17K.



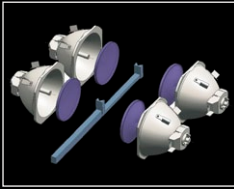
Official Worldwide
Olympic Partner



Splendid Images from a Compact Body

Incredible 20,000 Im*¹ of Brightness

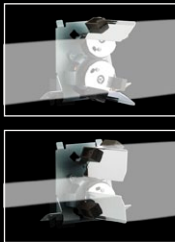
Panasonic's unique quad-lamp system, with its new high-power UHM lamps, has helped to make the body extremely compact while providing an astounding 20,000 Im*¹ of brightness.



Lamp mode	Brightness (lumens)		Lamp replacement cycle (hours)* ²
	PT-DZ21K PT-DS20K	PT-DW17K	
Quad	20,000	17,000	2,000
Triple	15,000	12,750	2,600
Dual	10,000	8,500	4,000
Single	5,000	4,250	8,000

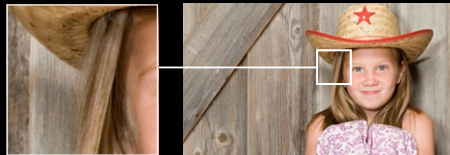
Dynamic Iris for a High 10,000:1*³ Contrast Ratio

Panasonic's Dynamic Iris uses a scene-linking aperture mechanism to achieve a remarkable 10,000:1*³ contrast without lowering its high brightness. This helps to reproduce deeper, richer blacks, and provides images with more detailed textures.

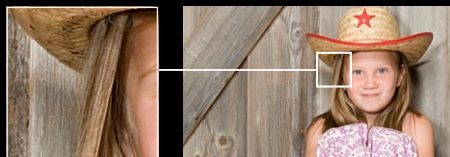


Detail Clarity Processor 3 Gives Natural Clarity to Even the Finest Details

This unique Panasonic circuit optimizes the sharpness of each image, based on the super-high-, high-, medium-, and low-frequency com-



Conventional sharpness control



Detail Clarity Processor 3

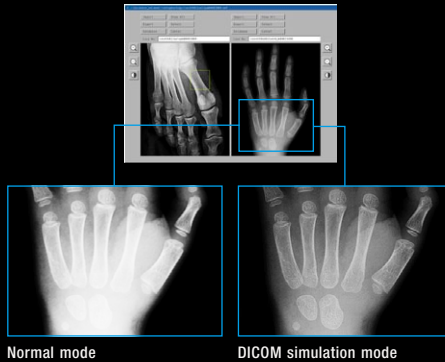
ponents of the extracted image information. The resulting images have more natural, lifelike expression.

System Daylight View 2 for Enhanced Color Perception

This unique Panasonic technology optimizes image quality to improve the color perception of the projected image in bright rooms. With a brightness of 20,000 Im*¹, it provides highly comfortable viewing even in bright lighting, and allows viewers to concentrate easily on the images.

DICOM Simulation Mode*⁴

This imaging mode is similar to DICOM part 14, which is a medical imaging standard. It reproduces X-ray images with remarkable clarity.



Normal mode

DICOM simulation mode

Active 3D Projection Capability (PT-DZ21K/DS20K)

The series is compatible with both passive and active 3D projection systems. It combines with either a separate, external 100/120/144 Hz drive with IR emitter and active shutter glasses, or an active filter and passive glasses, for viewing 3D images.



Advanced Technologies for Excellent Image Quality

- 3D color management system
- Full 10-bit image processing
- Progressive cinema scan (3:2 pulldown)
- Dynamic sharpness control
- Digital noise reduction
- IP conversion
- AI scene control
- 2:2 pulldown mode
- sRGB compatibility
- Fine-adjustable color temperature
- Waveform monitor function

High Reliability and Low TCO with Easy Maintenance

Low TCO and an Environmentally Friendly Design

The PT-DZ21K Series projectors lower the total cost of ownership (TCO) because they have a lamp replacement cycle of up to 2,000 hours*². Their environmentally friendly design also includes a low power consumption of 2,300 W.

Four-Lamp System Enables Stable, Extended Operation

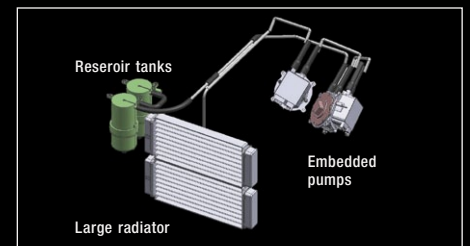
The four-lamp system allows the projector to keep working even if a lamp should fail. The Lamp Relay mode also operates the lamps alternately to enable 24/7 projection. Quad, Triple, Dual and Single Lamp modes can be used.

Easy Lamp Replacement

For easier maintenance, you can replace the lamp from the rear. This makes it easy to replace a lamp while the projector is still in the mounting bracket or dual stacked.

Liquid Cooling System Attains a High Level of Reliability

This new liquid cooling system directly cools the DLP™ chip to improve performance and enable operation up to 45 °C (113 °F)*⁵. It allows quiet (49 dB) and versatile use while stabilizing performance. It also helps to make the body compact. And the system is hermetically sealed, so you don't need to replenish the liquid.



Eco Filter that Needs No Maintenance for up to 12,000 Hours*⁶

The Eco Filter has an electrostatic Micro Cut Filter that collects minute dust particles with an ion effect. It combines with the dust-resistant cabinet to enable long-term use even under harsh conditions. Its maintenance cycle of up to

*¹ The PT-DW17K has 17,000 Im of brightness. *² The usage environment affects the lamp replacement cycle. *³ Full on/off, with dynamic iris set to "3". *⁴ This product is not a medical instrument. Do not use it for actual medical diagnosis. *⁵ The operating temperature range is 0 °C to 40 °C (32 °F to 104 °F) when the fan control is set to HIGH ALTITUDE MODE (for altitudes from 1,400 m to 2,700 m (4,593 ft to 8,858 ft) above sea level). When the projector is used with the ET-SFR510 Smoke Cut Filter, the operating temperature range is 0 °C to 35 °C (32 °F to 95 °F), and the projector cannot be used in places at high altitude. *⁶ The usage environment affects the filter maintenance cycle.

The Panasonic PT-DZ21K Series of flagship models feature breathtakingly beautiful images and reliable operation.

A host of creative capabilities meet the projection needs of highly critical professionals.

12,000 hours reduces hassle, and the environmental design lets you wash the filter with water and reuse it.*7



System and Installation Flexibility with Diverse Functions

Flexible Installation

The wide adjustment range of the powered horizontal/vertical lens shift function can be easily adjusted with the remote control. The unit can also be rotated 360° vertically*8, to accommodate various installation conditions. The lens-centered design contributes to easy installation.

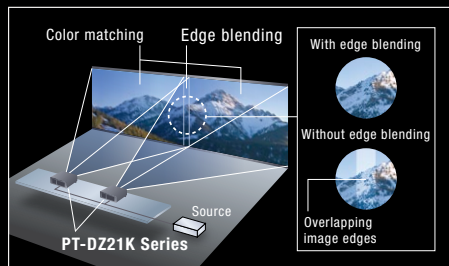


Multi-Unit Brightness Control

This function automatically corrects the brightness fluctuations that occur over time in the individual projectors of a multi-screen system. Up to eight projectors can be controlled by connecting to each other via a hub, and this can be increased to a maximum of 2,048 projectors by using "Multi Projector Monitoring & Control Software Ver. 2.7."

Multi-Screen Support System Seamlessly Connects Multiple Screens

- **Edge Blending:** The edges of adjacent screens can be blended and their luminance controlled.
- **Color Matching:** This function corrects for slight variations in the color reproduction range of individual projectors. The PC software assures easy, accurate control.



- **Multi-Screen Processor:** The PT-DZ21K Series can project large, multi-screen images without any additional equipment. Up to 100 units (10 × 10) can be edge-blended at a time.

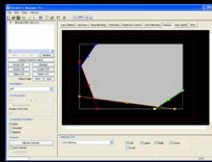
Geometric Adjustment for Specially Shaped Screens (PT-DZ21K/DS20K)

This function adjusts the image for projection onto spherical, cylindrical and other specially shaped screens. You can make the adjustment easily using only the remote control, with no external equipment needed.

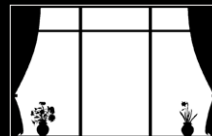


Optional Upgrade Kit (ET-UK20) Featuring Geometry Manager Pro (PT-DZ21K/DS20K)

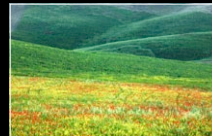
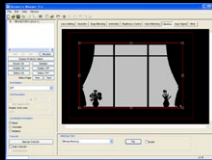
The new Geometry Manager Pro software included in the optional upgrade kit supports Color Matching and Edge Blending for multi-projector setups (max. 32 units). It also allows creative masking using four lines or bitmap data. And its flexible and complex geometric adjustment capability suits a wide variety of screen shapes.



Line masking



Create masking data...



Use it to overlap the projection image...

Bitmap masking: Detailed masking is also possible with an image of up to 1,920 by 1,200 pixels for the PT-DZ21K and 1,400 by 1,050 pixels for the PT-DS20K.



And the image is projected only in the designated areas.

Multiple Terminals

The PT-DZ21K Series has an array of terminals, including DVI-D, HDMI and two RGB inputs. The PT-DZ21K and PT-DS20K feature a 3D-ready HD/SD-SDI input and 3D sync terminals to connect an emitter for 3D projection.

Multi Projector Monitoring & Control Software Ver. 2.7

Panasonic's original Multi Projector Monitoring & Control Software Ver. 2.7 freeware lets you control and monitor multiple projectors at the same time over a wired LAN. If a problem occurs, an alarm message is sent to the monitoring/controlling PC.

Other Valuable Features

- Mechanical lens shutter with fade in/out effect
- P-in-P function*9
- 30 m (98.4 ft) long-range wireless remote control with LED backlight
- ID assignment for up to 64 units
- Control device setup function
- Built-in test pattern
- Selectable 10-language on-screen menu (English, German, French, Spanish, Italian, Portuguese, Russian, Japanese, Chinese, Korean)
- RoHS Directive compliant
- Anti-theft features with chain opening

Ecology-Conscious Design

- No halogenated flame retardants are used in the cabinet.
- Lead-free solder is used to mount components to the printed circuit boards.
- Stand-by power consumption of only 0.3 W*10.
- Auto Power Save activates standby mode when no signal is input.

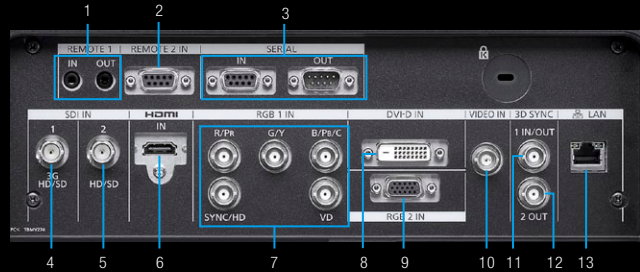


All PT-DZ21K Series projectors are carefully manufactured at the Panasonic factory in Japan, under strict quality control. This is another, very important advantage of a Panasonic projector.

*7 When washing with water, please follow the procedures listed in the operating instructions. Also, we recommend replacing the filter with a new one after it has been washed and reused twice. If the filter is not sufficiently clean after washing, replace it with a new one. *8 A special fixture must be attached to the lamp case when the projector is placed at an angle within ±30° (upward/downward) of the vertical. *9 This function cannot be used with some input signals and selected inputs. *10 With the STANDBY MODE set to ECO. When the STANDBY MODE is set to ECO, network functions such as power on over the LAN will not operate. Also, only certain commands can be received for external control using the serial terminal.



Terminals



- 1 Remote 1 input/output
- 2 Remote 2 input
- 3 Serial input/output
- 4 SDI 1 input (PT-DZ21K/DS20K only)
- 5 SDI 2 input (PT-DZ21K/DS20K only)
- 6 HDMI input
- 7 RGB 1 input
- 8 DVI-D input
- 9 RGB 2 input
- 10 Video input
- 11 3D sync 1 input/output (PT-DZ21K/DS20K only)
- 12 3D sync 2 output (PT-DZ21K/DS20K only)
- 13 LAN connector

Projection Distance

PT-DZ21K (16:10 aspect ratio)

Diagonal image size	Throw distance												
	ET-D75LE6 0.9-1.1:1		ET-D75LE10 1.3-1.7:1		ET-D75LE20 1.7-2.4:1		ET-D75LE30 2.4-4.7:1		ET-D75LE40 4.6-7.4:1		ET-D75LE8 7.3-13.8:1		ET-D75LE50 0.7:1
	min.	max.	min.	max.	min.	max.	min.	max.	min.	max.	min.	max.	
1.78 [70°]	1.35 (4.5)	1.62 (5.3)	1.90 (6.3)	2.46 (8.1)	2.46 (8.1)	3.58 (11.8)	3.56 (11.7)	6.94 (22.8)	6.87 (22.6)	11.05 (36.2)	10.78 (35.4)	20.56 (67.5)	1.01 (3.3)
2.54 [100°]	1.96 (6.5)	2.34 (7.7)	2.76 (9.1)	3.56 (11.7)	3.55 (11.7)	5.17 (17.0)	5.13 (16.9)	9.99 (32.8)	9.88 (32.4)	15.85 (52.0)	15.57 (51.1)	29.53 (96.9)	1.47 (4.8)
3.81 [150°]	2.96 (9.8)	3.56 (11.7)	4.18 (13.8)	5.40 (17.8)	5.37 (17.7)	7.81 (25.7)	7.75 (25.5)	15.08 (49.5)	14.90 (48.9)	23.85 (78.3)	23.54 (77.3)	44.47 (146.0)	2.24 (7.4)
5.08 [200°]	3.97 (13.1)	4.75 (15.6)	5.60 (18.4)	7.24 (23.8)	7.19 (23.6)	10.45 (34.3)	10.38 (34.1)	20.17 (66.2)	19.93 (65.4)	31.86 (104.5)	31.52 (103.5)	59.41 (195.0)	3.01 (9.9)
7.62 [300°]	5.99 (19.7)	7.17 (23.6)	8.44 (27.7)	10.91 (35.8)	10.82 (35.6)	15.73 (51.7)	15.62 (51.3)	30.34 (99.6)	29.97 (98.3)	47.87 (157.0)	47.47 (155.8)	89.30 (293.0)	4.56 (15.0)
10.16 [400°]	8.00 (26.3)	9.58 (31.5)	11.28 (37.1)	14.58 (47.9)	14.46 (47.5)	21.01 (69.0)	20.86 (68.5)	40.51 (132.9)	40.01 (131.3)	63.87 (209.6)	63.42 (208.1)	119.19 (391.1)	- (-)
12.70 [500°]	10.01 (32.9)	11.99 (39.4)	14.12 (46.4)	18.25 (59.4)	18.09 (59.4)	26.29 (86.3)	26.11 (85.7)	50.68 (166.3)	50.05 (164.2)	79.88 (262.1)	79.37 (260.5)	149.08 (489.1)	- (-)
15.24 [600°]	12.03 (39.5)	14.40 (47.3)	16.96 (55.7)	21.93 (72.0)	21.73 (71.3)	31.58 (103.6)	31.35 (102.9)	60.85 (199.7)	60.09 (197.2)	95.89 (314.6)	95.32 (312.8)	178.96 (587.2)	- (-)

unit: meters (feet)

PT-DS20K (4:3 aspect ratio)

Diagonal image size	Throw distance												
	ET-D75LE6 1.0-1.2:1		ET-D75LE10 1.4-1.8:1		ET-D75LE20 1.8-2.6:1		ET-D75LE30 2.6-5.1:1		ET-D75LE40 5.0-8.0:1		ET-D75LE8 7.9-15.0:1		ET-D75LE50 0.8:1
	min.	max.	min.	max.	min.	max.	min.	max.	min.	max.	min.	max.	
1.78 [70°]	1.39 (4.8)	1.66 (5.5)	1.95 (6.4)	2.52 (8.3)	2.52 (8.3)	3.66 (12.1)	3.64 (12.0)	7.10 (23.3)	7.02 (23.0)	11.29 (37.0)	11.09 (36.4)	21.14 (69.4)	1.03 (3.4)
2.54 [100°]	2.01 (6.7)	2.41 (7.9)	2.82 (9.3)	3.64 (12.0)	3.63 (12.0)	5.28 (17.4)	5.24 (17.3)	10.21 (33.6)	10.10 (33.1)	16.19 (53.1)	16.01 (52.6)	30.36 (99.6)	1.50 (4.9)
3.81 [150°]	3.05 (10.0)	3.65 (12.0)	4.27 (14.0)	5.52 (18.2)	5.49 (18.0)	7.98 (26.2)	7.92 (26.0)	15.41 (50.6)	15.23 (50.0)	24.37 (80.0)	24.21 (79.5)	45.72 (150.0)	2.29 (7.5)
5.08 [200°]	4.08 (13.4)	4.89 (16.1)	5.72 (18.8)	7.39 (24.3)	7.34 (24.1)	10.67 (35.1)	10.60 (34.8)	20.60 (67.6)	20.36 (66.8)	32.54 (106.8)	32.40 (106.4)	61.08 (200.4)	3.08 (10.1)
7.62 [300°]	6.15 (20.2)	7.37 (24.2)	8.62 (28.3)	11.14 (36.6)	11.06 (36.3)	16.07 (52.8)	15.96 (52.4)	30.99 (101.7)	30.61 (100.4)	48.89 (160.4)	48.80 (160.2)	91.79 (301.2)	4.65 (15.3)
10.16 [400°]	8.22 (27.0)	9.85 (32.4)	11.52 (37.9)	14.80 (48.9)	14.77 (48.5)	21.46 (70.5)	21.31 (70.0)	41.38 (135.8)	40.87 (134.1)	65.25 (214.1)	65.19 (213.9)	122.51 (402.0)	- (-)
12.70 [500°]	10.29 (33.8)	12.33 (40.5)	14.42 (47.4)	18.65 (61.2)	18.48 (60.7)	26.86 (88.2)	26.67 (87.5)	51.77 (169.9)	51.12 (167.7)	81.60 (267.7)	81.59 (267.7)	153.23 (502.8)	- (-)
15.24 [600°]	12.36 (40.6)	14.81 (48.6)	17.33 (56.9)	22.40 (73.5)	22.20 (72.9)	32.25 (105.9)	32.03 (105.1)	62.15 (204.0)	61.38 (201.4)	98.00 (321.5)	97.98 (321.5)	183.95 (603.6)	- (-)

PT-DW17K (16:9 aspect ratio)

Diagonal image size	Throw distance												
	ET-D75LE6 1.0-1.2:1		ET-D75LE10 1.4-1.9:1		ET-D75LE20 1.8-2.7:1		ET-D75LE30 2.7-5.2:1		ET-D75LE40 5.1-8.2:1		ET-D75LE8 8.2-15.4:1		ET-D75LE50 0.8:1
	min.	max.	min.	max.	min.	max.	min.	max.	min.	max.	min.	max.	
1.78 [70°]	1.56 (5.2)	1.87 (6.2)	2.18 (7.2)	2.82 (9.3)	2.82 (9.3)	4.10 (13.5)	4.07 (13.4)	7.94 (26.1)	7.86 (25.8)	12.62 (41.4)	12.43 (40.8)	23.65 (77.6)	1.16 (3.8)
2.54 [100°]	2.25 (7.4)	2.70 (8.9)	3.16 (10.4)	4.08 (13.4)	4.06 (13.4)	5.91 (19.4)	5.87 (19.3)	11.42 (37.5)	11.30 (37.1)	18.10 (59.4)	17.92 (58.9)	33.94 (111.4)	1.69 (5.5)
3.81 [150°]	3.41 (11.2)	4.08 (13.4)	4.78 (15.7)	6.18 (20.3)	6.14 (20.2)	8.92 (29.3)	8.86 (29.1)	17.23 (56.6)	17.02 (55.9)	27.23 (89.3)	27.08 (88.9)	51.10 (167.7)	2.57 (8.4)
5.08 [200°]	4.56 (15.0)	5.47 (18.0)	6.40 (21.0)	8.27 (27.2)	8.21 (27.0)	11.93 (39.2)	11.85 (38.9)	23.03 (75.6)	22.75 (74.6)	36.36 (119.3)	36.23 (119.3)	68.25 (224.0)	3.45 (11.3)
7.62 [300°]	6.87 (22.6)	8.24 (27.1)	9.64 (31.7)	12.46 (40.9)	12.36 (40.6)	17.96 (59.0)	17.83 (58.6)	34.63 (113.7)	34.20 (112.2)	54.62 (179.2)	54.54 (179.0)	102.55 (336.5)	5.21 (17.1)
10.16 [400°]	9.18 (30.2)	11.01 (36.2)	12.88 (42.3)	16.65 (54.7)	16.50 (54.2)	23.98 (78.7)	23.81 (78.2)	46.23 (151.7)	45.66 (149.8)	72.88 (239.1)	72.85 (239.1)	136.85 (449.0)	- (-)
12.70 [500°]	11.49 (37.8)	13.78 (45.2)	16.12 (52.9)	20.84 (68.4)	20.65 (67.8)	30.01 (98.5)	29.80 (98.8)	57.83 (189.8)	57.11 (187.4)	91.14 (299.0)	91.16 (299.1)	171.16 (561.6)	- (-)
15.24 [600°]	13.80 (45.3)	16.55 (54.3)	19.36 (63.6)	25.02 (82.1)	24.80 (81.4)	36.03 (118.3)	35.78 (117.4)	69.43 (227.8)	68.56 (225.0)	109.40 (358.9)	109.47 (359.2)	205.46 (674.1)	- (-)

Optional Accessories

ET-D75LE6
Zoom lens



ET-PKD510H
High-ceiling
mount bracket



ET-D75LE10
Zoom lens



ET-D75LE20
Zoom lens



ET-PKD510S
Low-ceiling
mount bracket



ET-D75LE30
Zoom lens



ET-PFD510
Frame



ET-D75LE40
Zoom lens



ET-LAD510
Replacement
lamp unit
(one bulb)



ET-D75LE8
Zoom lens



ET-LAD510F
Replacement lamp unit
(a set of four bulbs)



ET-EMF510
Replacement filter



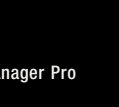
ET-D75LE50
Fixed-focus lens



ET-SFR510
Smoke cut filter



ET-UK20
Upgrade Kit
(Geometry Manager Pro
included)



Specifications

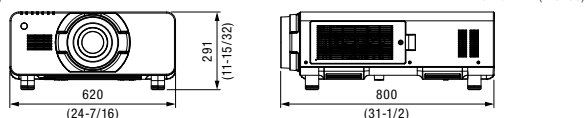
Model	PT-DZ21K	PT-DS20K	PT-DW17K	
Power supply	200–240 V AC, 50/60 Hz (Max current requirements: 12 A @200 V)			
Power consumption	2,300 W (0.3 W with STANDBY MODE set to ECO* ¹ 9 W with STANDBY MODE set to NORMAL.)			
Dissipation BTU	Max. 7,848 BTU/hour (without light output: 7,585 BTU/hour)			
DLP™ chip	Panel size Display method Pixels	24.4 mm (0.96 in) diagonal (16:10 aspect ratio) DLP™ chip × 3, DLP™ projection system 2,304,000 (1,920 × 1,200) × 3, total of 6,912,000 pixels	24.1 mm (0.95 in) diagonal (4:3 aspect ratio) DLP™ chip × 3, DLP™ projection system 1,470,000 (1,400 × 1,050) × 3, total of 4,410,000 pixels	21.6 mm (0.85 in) diagonal (16:9 aspect ratio) DLP™ chip × 3, DLP™ projection system 1,049,088 (1,366 × 768) × 3, total of 3,147,264 pixels
Lens	Optional powered zoom and fixed-focus lenses			
Lamp	465 W UHM lamp × 4, replacement cycle of up to 2,000 hours* ²			
Screen size (diagonal)	1.78–15.24 m (70–600 in), 1.78–7.62 m (70–300 in) with the ET-D75LE50, 16:10 aspect ratio	1.78–15.24 m (70–600 in), 1.78–7.62 m (70–300 in) with the ET-D75LE50, 4:3 aspect ratio	1.78–15.24 m (70–600 in), 1.78–7.62 m (70–300 in) with the ET-D75LE50, 16:9 aspect ratio	
Brightness* ³	20,000 lm (four-lamp)			
Center-to-corner uniformity* ³	90 %			
Contrast* ³	10,000:1 (full on/off, with dynamic iris set to "3")			
Resolution	1,920 × 1,200 pixels	1,400 × 1,050 pixels (Input signals that exceed this resolution will be converted to 1,400 × 1,050 pixels.)	1,366 × 768 pixels (Input signals that exceed this resolution will be converted to 1,366 × 768 pixels.)	
Scanning frequency	SDI SD-SDI HD-SDI Dual-link HD-SDI 3G-SDI HDMI/DVI-D VGA (640 × 480)–WUXGA* ⁴ (1,920 × 1,200), compatible with non-interlaced signals only, dot clock: 25–162 MHz RGB YPbPr (YCbCr) Video/YC	SMPTE ST 259 compliant, [YCbCr 4:2:2 10-bit] 480i, 576i SMPTE ST 292 compliant, [YCbCr 4:2:2 10-bit] 720/50p, 720/60p, 1035/60i, 1080/50i, 1080/60i, 1080/25p, 1080/24p, 1080/24sF, 1080/30p SMPTE ST 372 compliant, [RGB 4:4:4 12-bit/10-bit] 1080/50i, 1080/60i, 1080/25p, 1080/24p, 1080/24sF, 1080/30p, [X'Y'Z' 4:4:4 12-bit] 2,048 × 1,080/24p, 2,048 × 1,080/24sF SMPTE ST 424 compliant, [YPbPr 4:2:2 10-bit] 1080/50p, 1080/60p, [RGB 4:4:4 12-bit/10-bit] 1080/50i, 1080/60i, 1080/25p, 1080/24p, 1080/24sF, 1080/30p 480p, 576p, 720/60p, 720/50p, 1080/60i, 1080/50i, 1080/24p, 1080/24sF, 1080/25p, 1080/30p, 1080/60p, 1080/50p fh: 15–100 kHz, fv: 24–120 Hz, dot clock: 20–162 MHz fh: 15.75 kHz, fv: 60 Hz [480i (525i)] fh: 31.50 kHz, fv: 60 Hz [480p (525p)] fh: 15.63 kHz, fv: 50 Hz [576i (625i)] fh: 31.25 kHz, fv: 50 Hz [576p (625p)] fh: 45.00 kHz, fv: 60 Hz [720 (750)/60p] fh: 15.75 kHz, fv: 60 Hz [NTSC/NTSC4.43/PAL-M/PAL60], fh: 15.63 kHz, fv: 50 Hz [PAL/PAL-N/SECAM]	–	
Optical axis shift* ⁵	Vertical Horizontal	±55 % (±44 % with the ET-D75LE6) from center of screen (powered) ±20 % (±15 % with the ET-D75LE6) from center of screen (powered)	±70 % (±60 % with the ET-D75LE6) from center of screen (powered) ±30 % (±20 % with the ET-D75LE6) from center of screen (powered)	
Keystone correction range	Vertical: ±40°* ⁶ , horizontal: ±15°		Vertical: ±40°* ⁶	
Keystone correction range with optional Upgrade Kit	Vertical: ±45°* ⁶ * ⁸ , horizontal: ±40°* ⁶ * ⁸		–	
Installation	Ceiling/floor, front/rear			
Terminals	SDI 1 IN SDI 2 IN 3D SYNC IN/OUT 3D SYNC OUT	BNC × 1 (3G/HD/SD-SDI) BNC × 1 (HD/SD-SDI) BNC × 1 (3D timing signal) BNC × 1 (3D timing signal)	–	
	DVI-D IN HDMI IN RGB 1 IN RGB 2 IN VIDEO IN SERIAL IN SERIAL OUT REMOTE 1 IN REMOTE 1 OUT REMOTE 2 IN LAN	DVI-D 24-pin × 1 (DVI 1.0 compliant, compatible with HDCP, compatible with single link only) HDMI 19-pin × 1 (Deep Color, compatible with HDCP) BNC × 5 (RGB/YPbPr/YCbCr/YC × 1) D-sub HD 15-pin (female) × 1 (RGB/YPbPr/YCbCr × 1) BNC × 1 (composite video) D-sub 9-pin (female) × 1 for external control (RS-232C compliant) D-sub 9-pin (male) × 1 for link control M3 × 1 for wired remote control M3 × 1 for link control (for wired remote control) D-sub 9-pin (female) × 1 for external control (parallel) RJ-45 × 1 (for network connection, 10Base-T/100Base-TX, compliant with PLink™)		
Cabinet materials	Molded plastic			
Dimensions (W × H × D)	620 × 291* ⁹ × 800 mm (24-7/16 × 11-15/32* ⁹ × 31-1/2 in) (optional lens not included)			
Weight* ¹⁰	Approximately 43 kg (94.8 lbs) (optional lens not included)			
Shipping dimensions (W × H × D)	U/EJ models: 965 × 418 × 865 mm (38 × 16-15/32 × 34-1/16 in), E models: 946 × 402 × 846 mm (38 × 15-13/16 × 33-5/16 in).			
Shipping weight	U models: 53 kg (116.8 lbs), EJ models: 54 kg (119.0 lbs), E models: 51 kg (112.4 lbs)			
Operation noise* ³	49 dB (quad lamp operation)			
Operating environment	Operating temperature: 0–45 °C (32–113 °F)* ¹¹ , operating humidity: 20–80 % (no condensation)			
Applicable software	Logo Transfer Software, Multi Projector Monitoring & Control Software, Geometry Manager Pro (included in the ET-UK20)		Logo Transfer Software, Multi Projector Monitoring & Control Software	
Supplied accessories	Power cord with secure lock, wireless/wired remote control unit, batteries (R6/AA type × 2)			

- *1 When the STANDBY MODE is set to ECO, network functions such as power on over the LAN will not operate. Also, only certain commands can be received for external control using the serial terminal.
- *2 The usage environment affects the lamp replacement cycle.
- *3 Measurement, measuring conditions, and method of notation all comply with ISO 21118 international standards.
- *4 WUXGA resolution is supported only when the signals are compliant with VESA CVT-RB (Coordinated Video Timing-Reduced Blanking).
- *5 Optical axis shift cannot be operated with the ET-D75LE50.
- *6 ±22° with the ET-D75LE50, ±28° with the ET-D75LE6, and ±40° with the ET-D75LE10 and ET-D75LE20.
- *7 Up to ±15° with the ET-D75LE50 and ET-D75LE6.
- *8 Up to a total of ±55° during simultaneous horizontal and vertical correction.
- *9 With legs at shortest position.
- *10 Average value. May differ depending on the actual unit.
- *11 The operating temperature range is 0 °C to 40 °C (32 °F to 104 °F) when the fan control is set to HIGH ALTITUDE MODE (for altitudes from 1,400 m to 2,700 m (4,593 ft to 8,858 ft) above sea level). When the projector is used with the ET-SFR510 Smoke Cut Filter, the operating temperature range is 0 °C to 35 °C (32 °F to 95 °F), and the projector cannot be used in places at high altitude.

NOTES ON USE

1. Do not install the projector in locations that are subject to excessive water, humidity, steam, or oily smoke. Doing so may result in fire, malfunction, or electric shock.
2. The projector uses a high-voltage mercury lamp that contains high internal pressure. This lamp may break, emitting a large sound, or fail to illuminate, due to impact or extended use.
3. The projector uses of high-wattage lamp that becomes very hot during operation. Please observe the following precautions:
 - Never place objects on top of the projector while it is operation.
 - Make sure there is an unobstructed space of 500 mm (19-11/16 inches) or more around the projector's exhaust openings.
 - Do not stack projector units directly on top of one another for the purpose of multiple (stacked) projection. When stacking projector units, be sure to provide the amount of space indicated between them. These space requirements also apply to installation where only one projector unit is operating at one time and the other unit is used as a backup.
 - If the projector is placed in a box or enclosure, temperature of the air surrounding the projector must be between 0 °C (32 °F) and 35 °C (95 °F). Also make sure the projector's intake and exhaust openings are not blocked. Take particular care to ensure that hot air from the exhaust openings is not sucked into the intake.
4. If the projector is to be operated continuously 24 hours a day / 7 days a week, use the multi-lamp optical system's alternating lamp operation (lamp changer) function. The projector can be operated continuously 24 hours a day / 7 days a week in four-lamp operation mode, but it will automatically operate with three lamps for 8 hours of the 24 hours / 7 days.
5. The lamp replacement cycle duration becomes shorter if the projector is operated repeatedly for short periods.
 - The length of time that it takes for the lamp to break or fail to illuminate varies greatly depending on individual lamp characteristics and usage conditions.
 - The brightness of the lamp will gradually decrease with use.
6. Because the ET-D75LE50 is a fixed short-throw lens, the lens shift function cannot be used with it.
7. Due to natural characteristics of lamps, screen brightness may vary (flicker). This is not an indication of faulty lamp performance.

Dimensions



The compact size, light weight, and low operating noise of the PT-DZ21K Series realize brighter images more applications.



Panasonic®

Weights and dimensions shown are approximate. Specifications and appearance are subject to change without notice. Product availability differs depending on region and country. This product may be subject to export control regulations. DLP, DLP logo and DLP Medallion logo are trademarks or registered trademarks of Texas Instruments. The projection distances and throw ratios given in this leaflet are for use only as guidelines. For more detailed information, please consult the dealer from whom you are purchasing the product. The PJLink trademark is an application trademark in Japan, the United States, and other countries and regions or registered trademarks. All other trademarks are the property of their respective trademark owners. Projection images simulated. TM USOC 36USC220506 © 2012 Panasonic Corporation. All rights reserved.



For more information about Panasonic projectors, please visit:
 Projector Global Web Site – panasonic.net/avc/projector
 Facebook – www.facebook.com/panasonicprojector
 YouTube – www.youtube.com/user/PanasonicProjector

All information included here is valid as of April 2012.

PT-DZ21KG1 Printed in Japan.