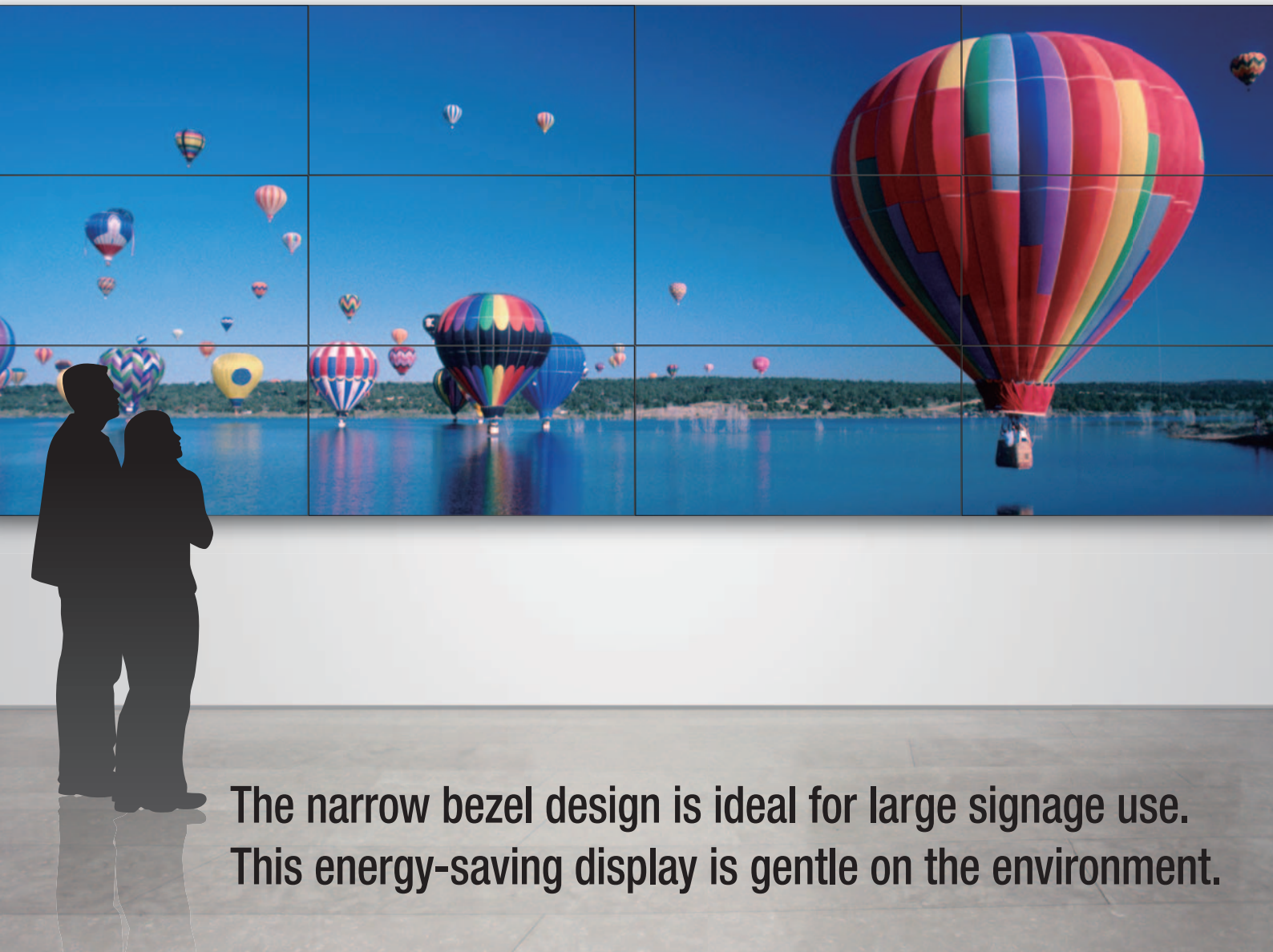


# Panasonic

ideas for life

55-inch **TH-55LFV50W**  
Super Narrow Bezel LED LCD Display



The narrow bezel design is ideal for large signage use.  
This energy-saving display is gentle on the environment.

## 01 Narrow Bezel

### Bezel-to-Bezel: 5.3 mm

A super narrow bezel design reduces the width of screen-joining borders to only 5.3 mm in wall videos. The borders are hardly visible even in very large-screen configurations, so images are more dynamic and natural.



## 02 High Visibility

### High 800 cd/m<sup>2</sup> brightness and a wide viewing angle

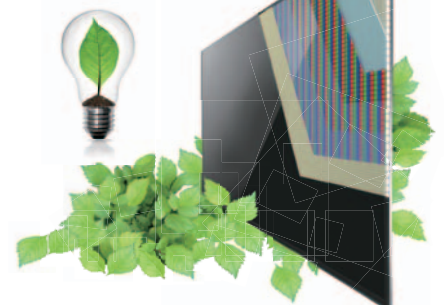
LCD panels with a full 800 cd/m<sup>2</sup> of brightness ensure high visibility even in large public spaces. The IPS system also provides a wide viewing angle.



## 03 Low Power Consumption

### Highly efficient LED LCD panel provides high-level energy savings.

In addition to producing crisp, clear images, they also offer highly uniform brightness when used as a video wall.



## Product specification (Design and specification subject to change without notice)

Model No.	TH-55LFV50W
DISPLAY	
Screen Size (Diagonal)	55-inch (1,387 mm)
Aspect Ratio	16:9
Panel Type	DIRECT LED
Number of Pixels (H x V)	1,920 x 1,080 pixels
Brightness	800 cd/m <sup>2</sup>
Contrast Ratio	1,400:1
Response Time	10 ms (G to G)
Viewing Angle (Horizontal/Vertical)	178°/178°
CONNECTION TERMINAL	
VIDEO In	BNC x 1
Audio In (L/R)	RCA Pin Jack x 1 set (Side) (Shared with Component In)
HDMI In	HDMI Type A x 1
Component In	BNC x 3
Audio In (L/R)	RCA Pin Jack x 1 set (Side) (Shared with VIDEO In)
DVI-D In	DVI-D 24-pin x 1
Audio In (L/R)	M3 Jack x 1 (Shared with PC In)
PC In	Mini D-Sub 15-pin x1 (Female)
Audio In (L/R)	M3 Jack x 1 (Shared with DVI-D In)
DVI-I Out	DVI-I 29-pin x 1
Audio Out (L/R)	RCA Pin Jack x 1 set
CONTROL	
Serial In/Out	D-Sub 9-pin x 1/D-Sub 9-pin x 1, RS-232C Compatible
LAN	RJ45 x 1 (Web Browser Control Only)
IR Transmitter In/Out	IR x 1/ x 1
AUDIO	
Speaker Out	External Speaker Terminal, 20 W [10 W/8 Ω + 10 W/8 Ω]
ELECTRICAL	
Power Requirements	220-240 V AC, 50/60 Hz, 110 V AC, 60 Hz (Taiwan Only)
Power Consumptions	320 W
Stand-by Conditions	Approx. 0.5 W
MECHANICAL	
Dimensions (W x H x D)	1,215.5 x 686.3 x 121.2 mm
Bezel Width	3.4 mm [Left/Top], 1.9 mm [Right/Bottom]
Weight	Approx. 36.0 kg
ENVIRONMENTAL	
Operating Environment	Temperature: 0 °C to 40 °C
	Humidity: 10% to 90% (Non condensation)

## Features

- Super Narrow Bezel
- 800-cd/m<sup>2</sup> Brightness
- Wide Viewing Angle with IPS Panel
- Daisy Chain
  - DVI Max 10 Units
  - Remote Daisy Chain Max 25 Units
- Remote Operation Lock
- ID Control with Serial Control
- VESA 400 x 400-mm Compatibility
- Landscape and Portrait Orientation
- Automatic Picture Position
- Screen Saver
- PC/DVI Power Management
- Power-on Screen Delay
- Seam Hides Video Off Mode
- Heat Status

## Optional Accessories

### Remote Control Kit

TY-RM50VW

### Cover Frame Kit

TY-CF55VW50