

# wePresent WiPG-1000

## WiPG-1000 User's Manual



(Model Name: WiPG-1000)

Version: 6.0

Date: January 11, 2013



**wePresent WiPG**  
Wireless interactive Presentation Gateway

## Table of Contents










1.	Overview .....	4
2.	Package Contents .....	5
3.	USB Token Contents .....	5
4.	Physical Details .....	5
5.	What You Might Need .....	7
6.	Quick Installation .....	7
7.	WiPG-1000 Receiver Device .....	9
8.	DoWiFi for Windows.....	10
8.1	Install the application.....	10
8.2	Start the application .....	11
8.3	Quick Connect.....	11
8.4	Connect to WiFi Network .....	12
8.5	Connect to Receiver Device .....	12
8.6	Login.....	12
8.7	Main User Interface .....	13
8.8	Screen Projection.....	13
8.9	Audio Projection .....	14
8.10	Menu .....	14
8.10.1	Show Receiver Information.....	15
8.10.2	Web Admin.....	15
8.10.3	Search Receiver Device .....	16
8.10.4	Launch SidePad -> SidePad Receiver.....	16
8.10.5	Enable BrowserSlides .....	17
8.10.6	Select Projection Desktop (Win XP/Vista/7).....	17
8.10.7	Projection Quality .....	18
8.10.8	Projection Mode.....	18
8.10.9	Projection Aspect Ratio .....	19
8.10.10	Enable USB IWB Bridge .....	19
8.10.11	Advanced Screen Capture .....	20
8.10.12	Send Audio to Display.....	21
8.10.13	Auto Power Manager.....	21
8.10.14	Auto WiFi Connect.....	22
8.10.15	Make wePresent WiPG-1000 Token .....	22
8.10.16	Copy Application to desktop.....	23
8.10.17	About.....	24
8.10.18	Exit.....	24
9.	DoWiFi for Mac.....	25

9.1	Install the application.....	25
9.2	Start the application .....	25
9.3	Quick Connect.....	25
9.4	Connect to WiFi Network .....	26
9.5	Connect to Receiver Device .....	26
9.6	Login.....	27
9.7	Main User Interface .....	27
9.8	Screen Projection.....	27
9.9	Audio Projection .....	28
9.10	Menu .....	28
9.10.1	Show Receiver Information.....	29
9.10.2	Web Admin.....	29
9.10.3	Search Receiver Device .....	30
9.10.4	Launch SidePad -> SidePad Receiver.....	30
9.10.5	Enable BrowserSlides .....	31
9.10.6	Projection Quality .....	31
9.10.7	Projection Mode.....	32
9.10.8	Projection Aspect Ratio .....	32
9.10.9	Send Audio to Display.....	33
9.10.10	Auto WiFi Connect.....	33
9.10.11	About.....	33
9.10.12	Exit.....	33
10.	Web Management.....	34
10.1	Home Page .....	34
10.2	Download .....	34
10.3	Conference Control .....	35
10.4	BrowserSlides .....	36
10.5	Admin.....	36
10.5.1	System Status .....	37
10.5.2	Device Setup.....	37
10.5.3	Network Setup .....	38
10.5.4	OSD Setup .....	40
10.5.5	Change Passwords.....	41
10.5.6	Reset to Default .....	42
10.5.7	Firmware Upgrade.....	43
10.5.8	BrowserSlides Setup .....	44
10.5.9	Reboot System.....	45
10.5.10	Logout.....	45
11.	Appendix .....	46
11.1	Wall-mount Instructions.....	46

# 1. Overview

wePresent WiPG-1000 is professional wireless presentation gateway. By enabling the Revolutionary “interactive” and “wireless” functions, you can throw your presentations wirelessly from a PC, Mac, iPad, iPhone, or Android devices to a projector! And use your pad, tab or phone to control your PC/Mac, or view the presenting slides!

## • WiPG-1000 Features Highlight:

Icon	Feature	Description
	DoWiFi	No more wires ... Display-over-WiFi for Windows & Mac
	Plug&Show	No software installation required. Just plug in the USB drive to your PC.
	MobiShow	Interactive PPT presentation via iPhone/iPad or Android devices
	WiFi-Doc	High quality presentation via iPhone/iPad or Android devices
	SidePad	Control the presentation on PC or Mac via iPhone/iPad or Android devices
	BrowserSlides	Broadcast slides to your devices with WiFi and web browser
	4-to-1 projection	Project four PC/Mac screens to one projector at once.
	Conference Control	Open WiPG's web page to control screen projection centrally. Or use mouse/keyboard to select a PC to show from WiPG's UI.
	SNMP Manager	Use the SNMP manager to manage WiPG devices across the network.

## • Basic Features

- Wireless screen and audio projection
- Remote desktop control feature
- Support Windows Win 8, Win7, Vista, XP
- Support Mac version 10.5 and above
- Plug and Show! No installation required ... just plug in the accompanied token to a USB port, and hassle free presentation can be started in seconds. (Windows)
- MobiShow Supportive for iOS/Android/Blackberry/Windows Mobile 5/6 handheld devices
- WiFi-Doc Supportive for iOS/Android mobile devices
- Up to 30FPS high speed 4-to-1 Split Screen Projection. Turn one projector into four, increase meeting productivity right away.
- Conference control! Allows moderators to streamline grand meetings.
- Provide session security login, wireless WEP/WPA key and Gatekeeper function to protect presentation contents and keep good security to office networks.
- Web management including software download and device settings
- Support WiFi AP-Client Mode

→Back

## 2. Package Contents

- wePresent WiPG-1000 Box
- wePresent WiPG-1000 USB Token
- Power Adapter (DC +5V, 2.5A)
- 2 WiFi Antenna
- Quick Installation Guide
- Warranty Card

## 3. USB Token Contents

- Windows Installer (WiPG-1000 Windows Installer)
- MAC Installer (WiPG-1000 Mac Installer)
- VAC Driver (For Windows XP Audio Projection)
- VDD Driver (For Windows Virtual Extended Screen)
- USBolP Driver (For USB IWB Bridge)
- Utility
  - PtG Converter (For MobiShow PtG function)
  - SNMP Manager (For SNMP Management)

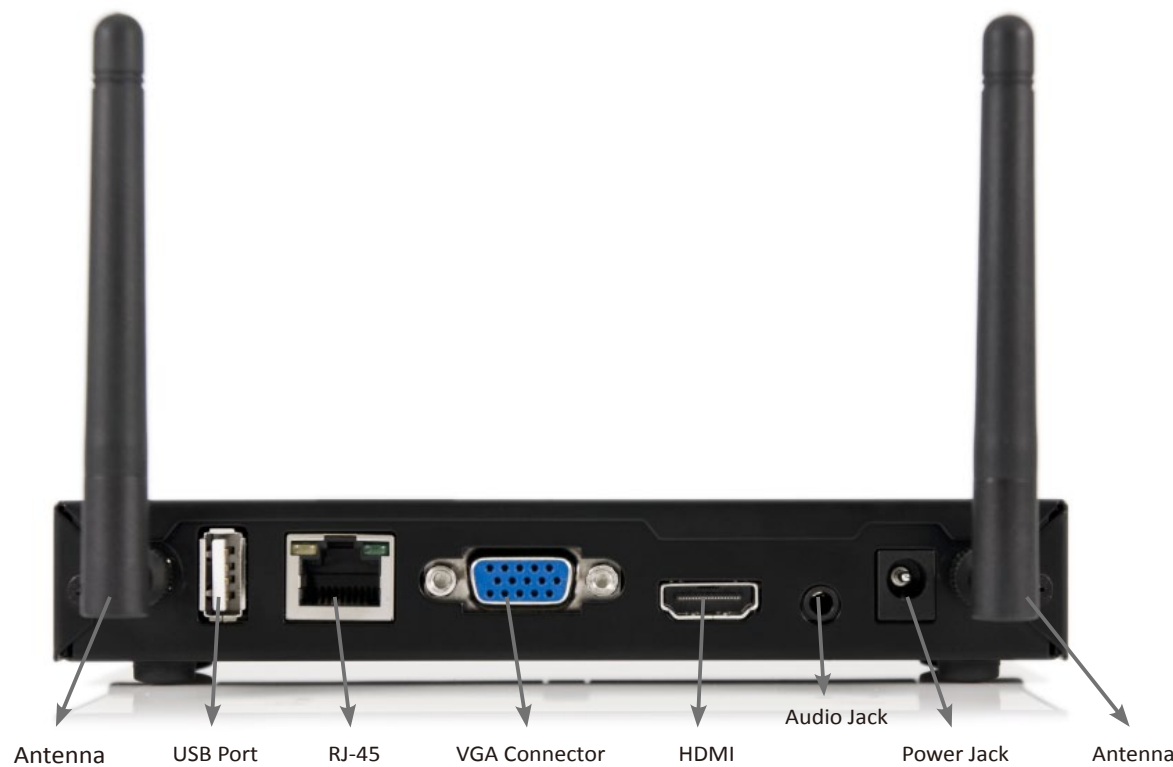
## 4. Physical Details

- Front Panel



	Description
<b>Power Button and LED</b>	Power on/off button. LED Indicator: System Loading(Red), Ready(Yellow)
<b>USB Port (Front)</b>	USB port for USB mouse and keyboard

- Rear Panel



	Description
Antenna	WiFi Antenna
USB Port (Rear)	USB port for USB IWB device (HID type)
RJ-45	10/100M RJ-45 port
VGA Connector	VGA connector
HDMI	HDMI Connector
Audio Jack	Audio Jack (3.5mm)
Power Jack	Power Jack (5V/2.5A)

- Bottom Side



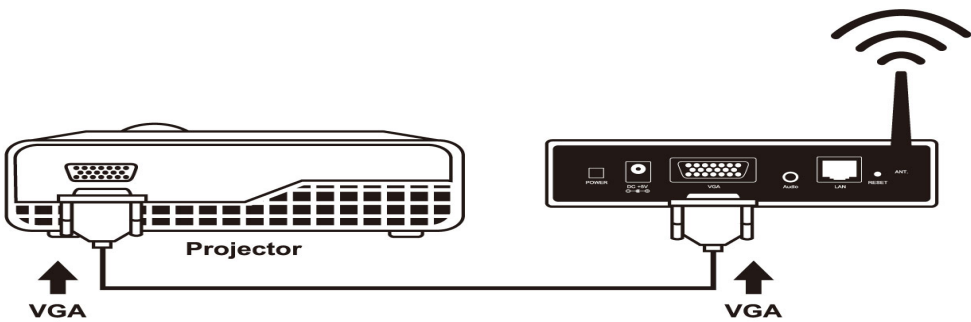
	Description
Screw Hole	Screw Hole for Wall Mount Kit
Reset Button	Press reset button and power on the device to execute Hardware Reset.

## 5. What You Might Need

- Projector or HDTV with VGA/HDMI interface
- Windows or Mac PC/Laptop
- Apple iPhone, iPad or iPod-touch device
- Android Phone or Tablet device
- Speaker (Optional, for audio projection feature)
- USB Mouse and Keyboard (Optional, for remote desktop feature)
- USB HID IWB Device (Optional, for IWB over IP feature)

## 6. Quick Installation

1. Connect wePresent WiPG-1000 device to Projector through VGA port and turn on projector power.



2. Connect the power adaptor to WiPG-1000 device and press the power button to turn on WiPG-1000 device.
  - It will show the default standby screen as below on projector when system is ready.



3. Attach the speaker cable to WiPG-1000 phone jack for audio output
4. Attach the USB mouse and keyboard to WiPG-1000 front USB port for OSD control and remote desktop control
5. Attach the USB IWB cable to WiPG-1000 rear USB port for IWB control

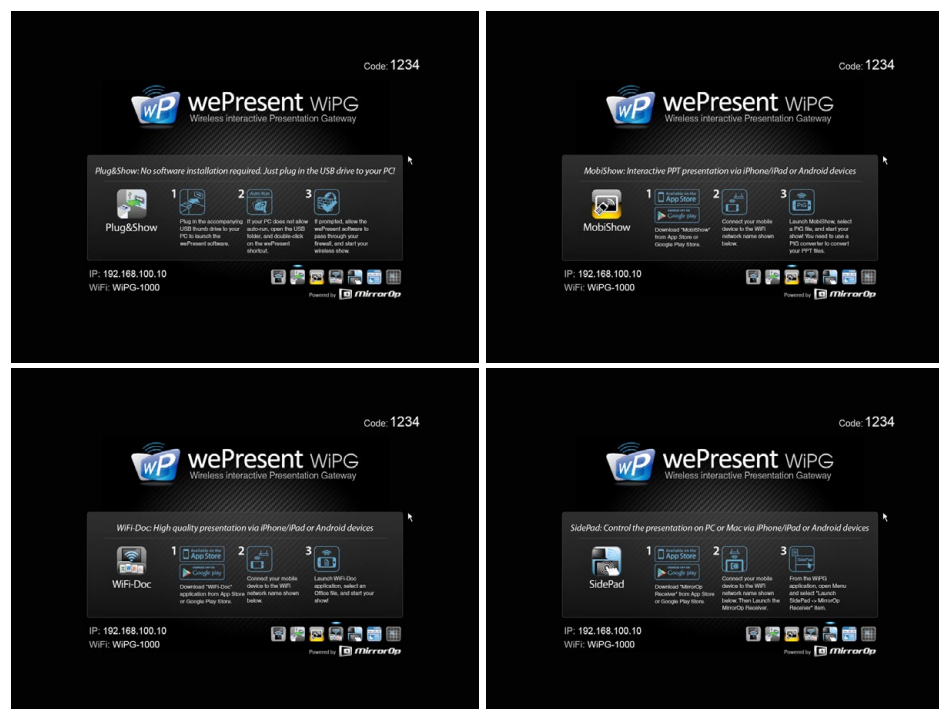


## 7. WiPG-1000 Receiver Device

1. Connect wePresent WiPG-1000 device to Projector through VGA port and turn on projector power.
2. It will show the Quick Guide Information, WiFi Network Name, IP Address and Code on standby screen.
3. If there is sender connected to WiPG-1000 device, it will show the PC-List on standby screen, conference moderator can use the USB mouse/keyboard to select the PC and control it remotely.



4. You can also click the feature Icon to browse the Quick Guide for each feature.



5. If you need more advance information, please click the “Advance” icon, you can find the FW version, resolution and WiFi security information. Meanwhile, you can also change the Quick Guide Language (EN/SC/TC/JP/KO) here.

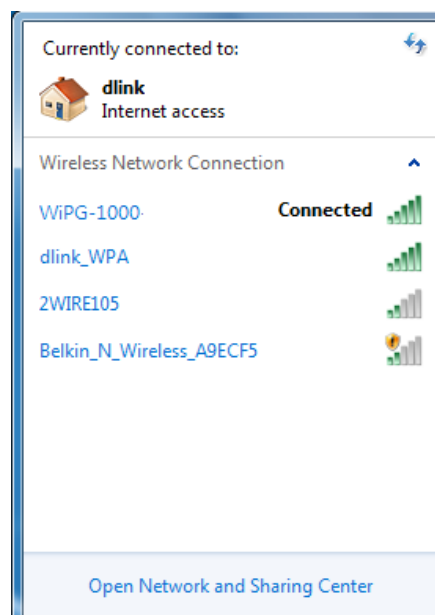


6. System will enter the Screen Saver mode if none is connected, it will restore to standby status immediately when there is any sender connected.

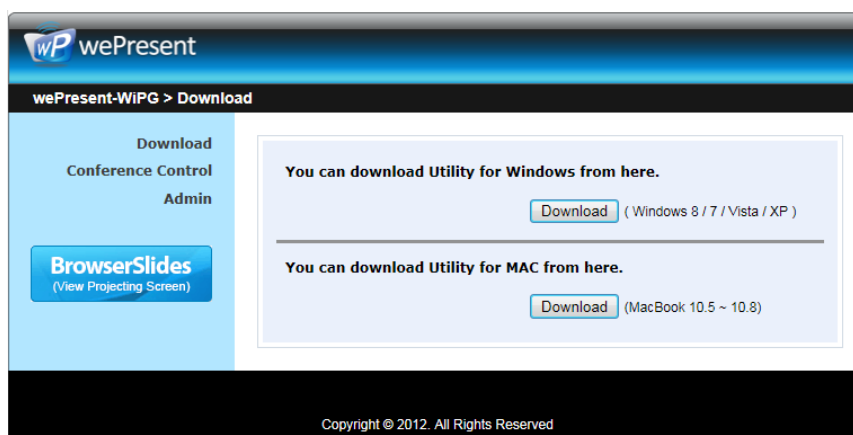
## 8. DoWiFi for Windows

### 8.1 Install the application

1. Make sure your PC WiFi is enabled already, and connect your PC to wePresent WiPG-1000 box through WiFi.



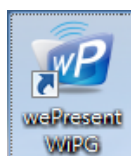
2. Open your browser and enter the IP address or enter the Device Name (SSID) shown on the left corner of projector screen to access the wePresent WiPG-1000 web home page. (Default IP: 192.168.100.10, Default Device Name (SSID): WiPG-1000)
3. Download the client software for “Win 8 / Win 7 / Vista / XP” and install on your PC. (Ps. You can also launch the application from PnS token directly.)



4. Launch WiPG-1000 client and connect to WiPG-1000 receiver.  
(Make sure your personal firewall allows wePresent WiPG-1000 software to pass through.)

## 8.2 Start the application

1. Click wePresent WiPG-1000 icon on desktop to execute the application, or launch the application from PnS token directly.
2. It will start to search wePresent WiPG-1000 receiver automatically.



## 8.3 Quick Connect

1. WiPG-1000 will memorize the last successful connection profile and open the quick connect dialog, you can enter the code and press the “Connect” button to connect this WiPG-1000 directly.



2. If you want to connect to another WiPG-1000 receiver, please press the “Rescan” button.

→Back

## 8.4 Connect to WiFi Network

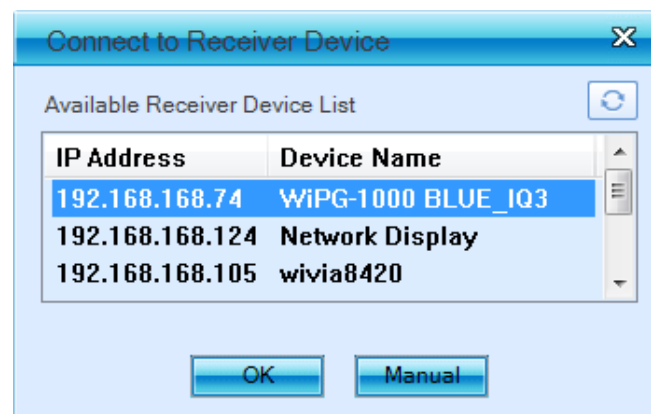
1. WiPG-1000 will search the available WiFi Network and list the WiPG-1000 WiFi Device. You can select a network and press the “Connect” button to connect the selected WiFi Device.



2. You can press the “Refresh” button to search again or press the “All” button to list all available WiFi Network name.
3. If you don’t like to change the WiFi Network and keep the connection to current network, you can press the “Skip” button.

## 8.5 Connect to Receiver Device

1. WiPG-1000 will search and list the WiPG-1000 receiver Device. You can select the target receiver device and press the “OK” button to connect the selected receiver device.



2. You can press the “Refresh” button to search again.
3. If you can’t find the target receiver device from the list, you can press the “Manual” button to enter the receiver IP address manually and connect.

## 8.6 Login

1. When it connects to a “Code” protection enabled WiPG-1000 receiver, you have to enter the “Code” and press the “Connect” button to login the receiver.

(You can find the CODE from the right-upper of OSD standby screen)



2. If you want to connect to another receiver or cancel the login, please press the “Cancel” button.

## 8.7 Main User Interface



## 8.8 Screen Projection

1. Click the “Play” button for full or split screen, you can project the main screen on to the display immediately, click the “Pause” button, you can freeze you projection screen, and click the “Stop” button to stop projecting your screen.

Button	Description
	Full Screen projection
	Project to Split #1
	Project to Split #2
	Project to Split #3
	Project to Split #4
	Stop projecting
	Pause projecting
	Enable the Windows Magnifier function

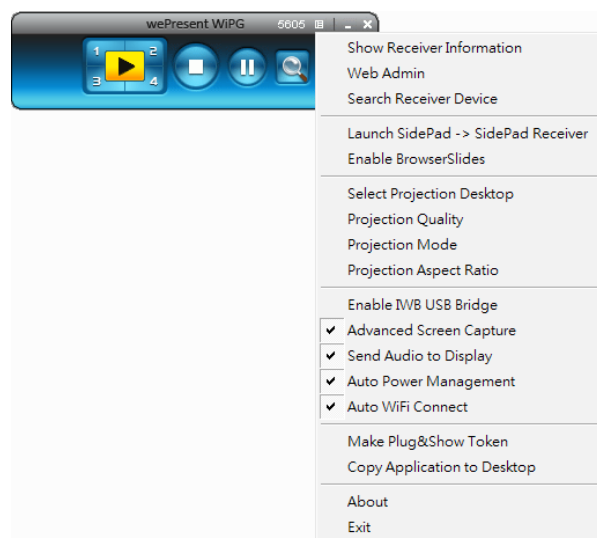
## 8.9 Audio Projection

1. When you are doing the full screen projection, you can also choose to project the audio to WiPG-1000 receiver for the multimedia or video scenario.
2. To enable or disable the audio projection feature, please change the setting from WiPG-1000 menu. (Menu -> Send audio to display)

**Note: For Windows XP system, please install the Audio driver ("VAC.exe", Virtual Audio Control Driver) on your computer first, you can find the software from USB Token. (Windows Vista / Win7/ Win8 is not necessary to install VAC)**

## 8.10 Menu

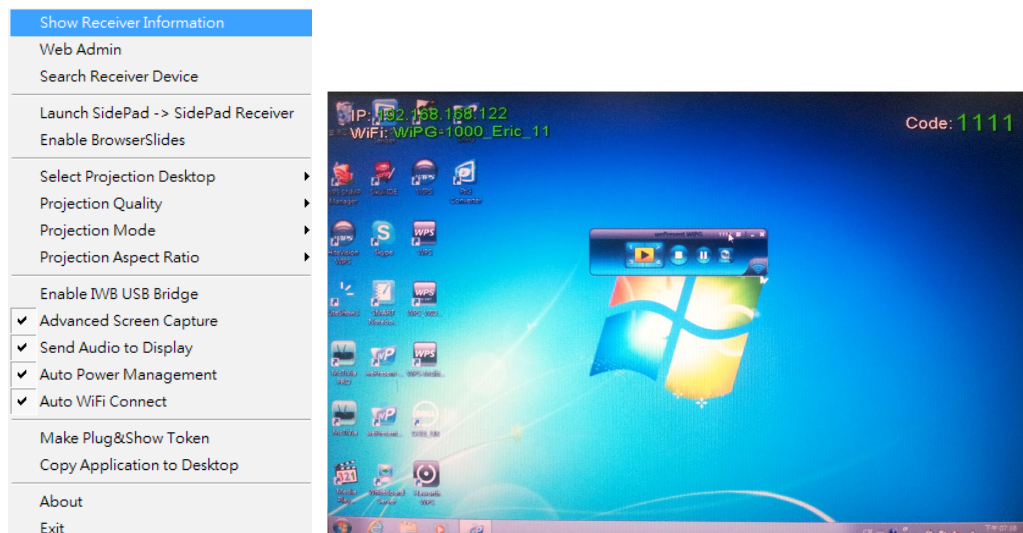
1. Press "Menu" button from the main UI, you will find the menu to enable the additional feature or to change the application options.



Item	Description
Show Receiver Information	Show Receiver Information on desktop
Web Admin	Open web admin page
Search Receiver	Search another receiver device
Launch SidePad -> SidePad Receiver	Launch SidePad sender
Enable BrowserSlides	Enable BrowserSlides feature
Select Projection Desktop	Select different projection desktop
Projection Quality	Change projection quality
Projection Mode	Change projection latency option
Projection Aspect Ratio	Change projection screen ratio
Enable IWB USB Bridge	Enable IWB USB bridge
Advanced Screen Capture	Enable advance screen capture
Send Audio to Display	Enable audio projection
Auto Power Management	Enable Auto Power management feature
Auto WiFi Connect	Enable Auto WiFi connect feature
Make Plug&Show Token	Make Plug&Show USB token
Copy Application to Desktop	Copy the application to desktop
About	About this application
Exit	Exit the application

### 8.10.1 Show Receiver Information

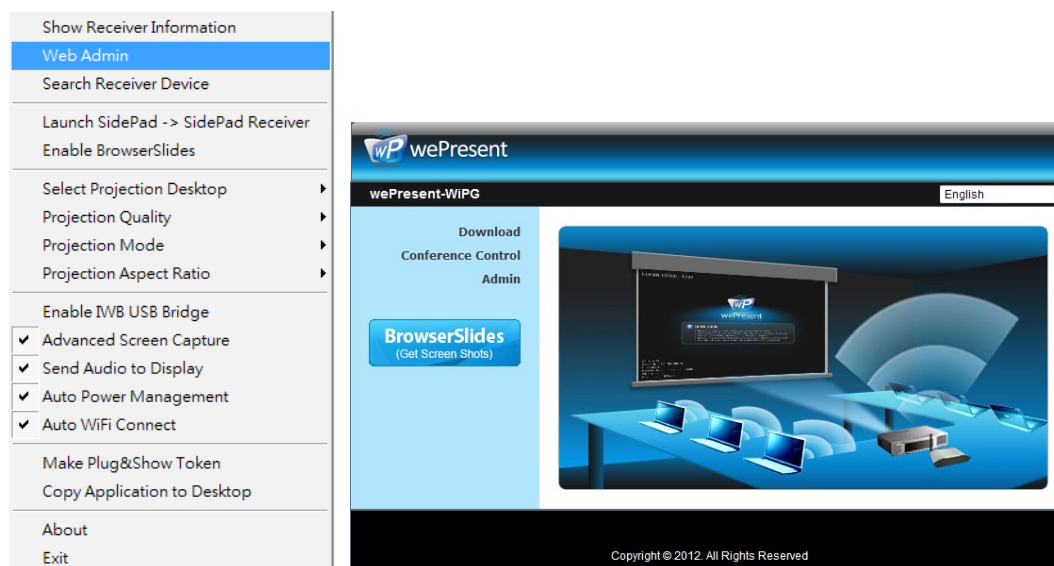
1. Click “Show Receiver Information”, it will display the Receiver Information on the projecting screen, including WiFi Name, IP Address and Code, then close automatically after 30 seconds.



### 8.10.2 Web Admin

1. Click “Web Admin”, it will open the browser and connect to the receiver web admin page automatically.

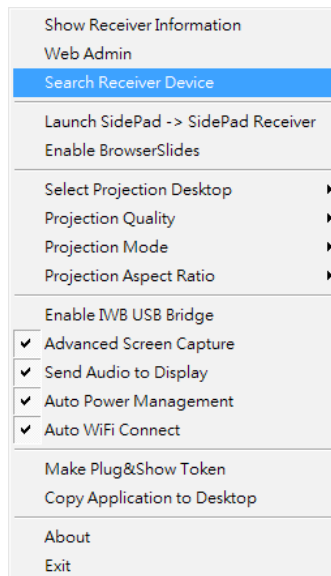
(You can find the details of web admin page from another chapter.)





### 8.10.3 Search Receiver Device

1. Click “Search Receiver Device”, it will disconnect from current receiver and search the receiver again.

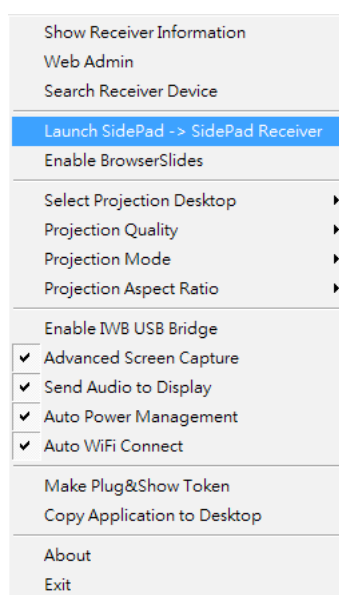


### 8.10.4 Launch SidePad -> SidePad Receiver

1. Open the main menu of the WiPG-1000 application(Win/Mac), and choose the item, “Launch SidePad -> SidePad Receiver”

**Note: You have to download the “SidePad receiver” on your Android/iOS device, then connect the Android/iOS to WiPG-1000 device through WiFi and Launch “SidePad Receiver”.**

2. In seconds, you shall see the PC desktop shown on the iOS Device. Use two fingers to pinch or one finger to pan the desktop image and control it by single or double clicks!





### 8.10.5 Enable BrowserSlides

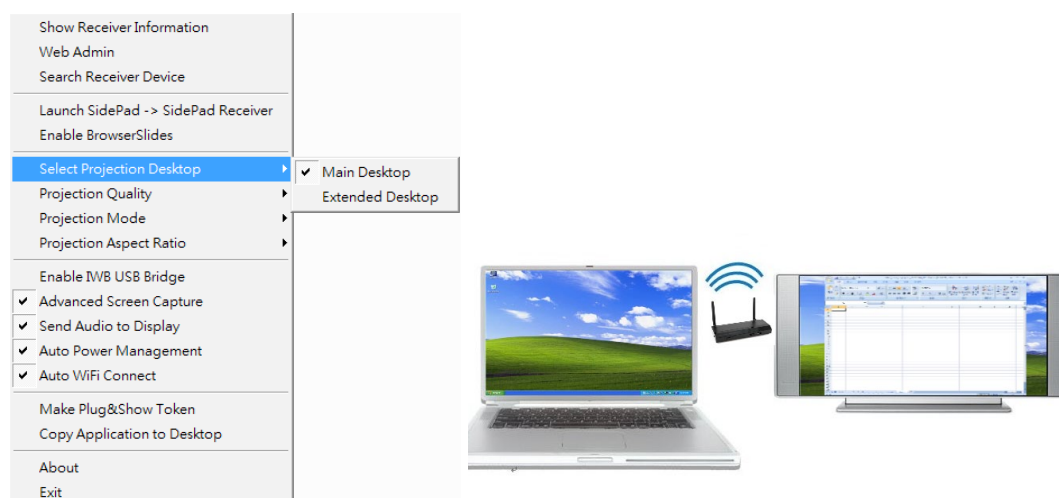
1. Click the “Enable BrowserSlides”, it will start to broadcast your slides to the browser on connected mobile devices.

**Note:** Audience need to connect to WiPG-1000 WiFi Network, open the browser and click the “BrowserSlides” button to start receiving the slides.



### 8.10.6 Select Projection Desktop (Win XP/Vista/7/8)

1. Click the “Select Projection Source” then you can select to project the main screen of desktop or the virtual extended screen.



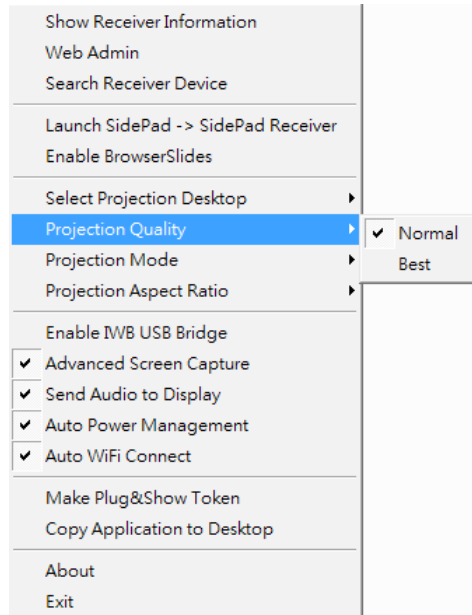
**Note:**

For Windows XP system, you need to install “VDD.exe” driver first, you can find it from USB token.

For Windows 7/Vista Starter edition, it can’t support extended screen.

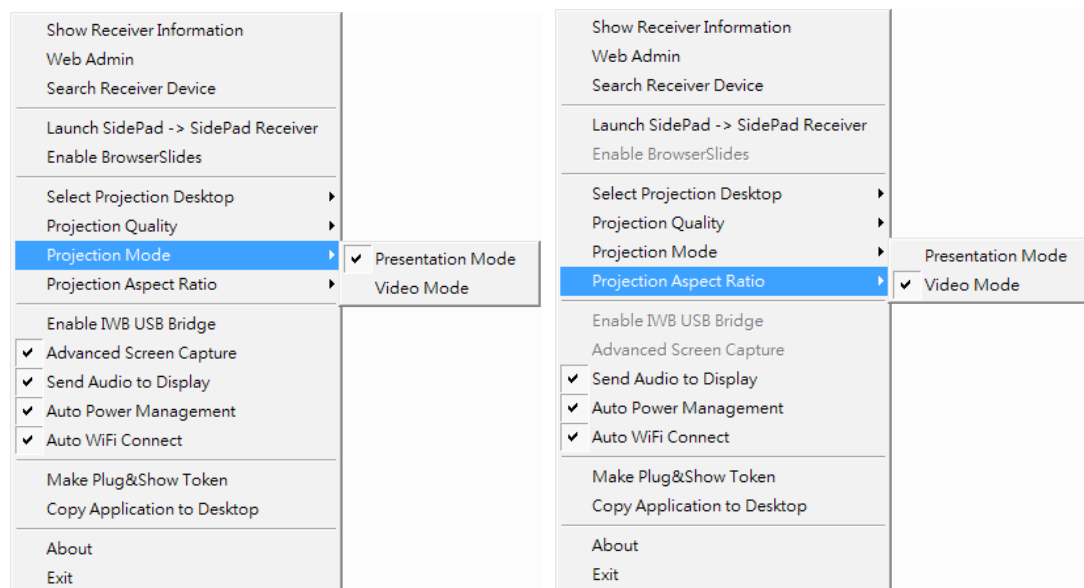
### 8.10.7 Projection Quality

1. Click the “Projection Quality”, choose “Normal” for faster projection speed with lower screen image quality, and “Best” for clear screen image quality but slower projection speed.



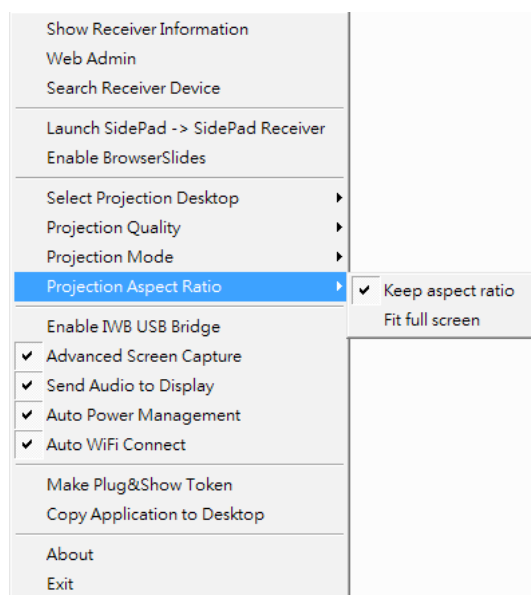
### 8.10.8 Projection Mode

1. The Projection Mode provides the option to support “Presentation Mode” and “Video Mode”.
2. For the “Video mode”, it will trigger the longer latency but much smooth performance when you are watching video, meanwhile it will change PC resolution to 1024x768 and gray some option, and change back to shortest latency when it detect you are moving the mouse cursor.
3. For the “Presentation Mode”, it will always keep the shortest latency to provide the most responsive operation performance.



### 8.10.9 Projection Aspect Ratio

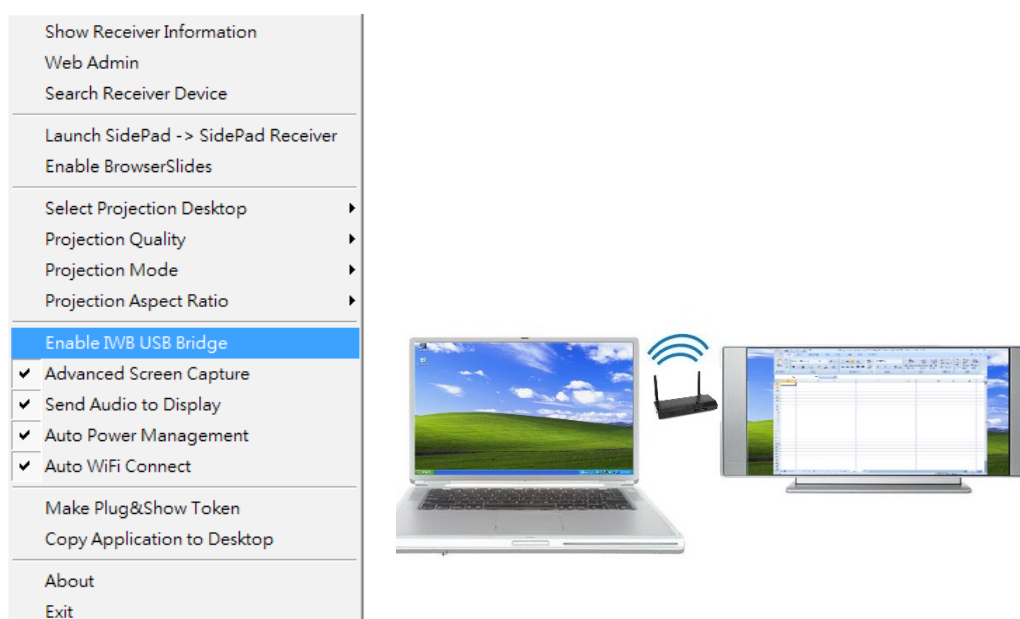
1. It can provide the projection screen ratio setting of “Keep Aspect Ratio” and “Fit Full Screen”.



### 8.10.10 Enable USB IWB Bridge

1. Click the “Enable USB IWB Bridge”, it will enable the USB IWB Bridge feature.
2. When you start the full screen projection, it will bridge the IWB device to your PC wirelessly.

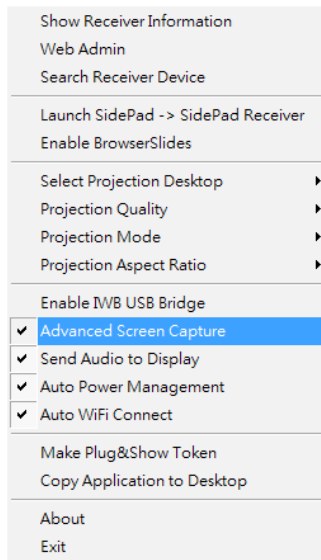
**Note:** You have to install the USBolP driver first. You can find the driver from USB token.



### 8.10.11 Advanced Screen Capture

1. Click the “Advanced Screen Capture”, you will be able to see tip windows and other layered windows (include the main UI) on the connected display. However, the mouse cursor may blink from time to time when you are projecting your PC screen!

- Disable “Advanced Screen Capture”.



Tip windows is not shown in projector

- Enable “Advanced Screen Capture”.

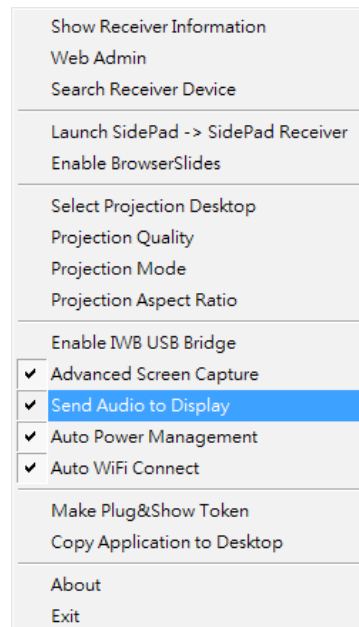


Tip windows is shown in projector

### 8.10.12 Send Audio to Display

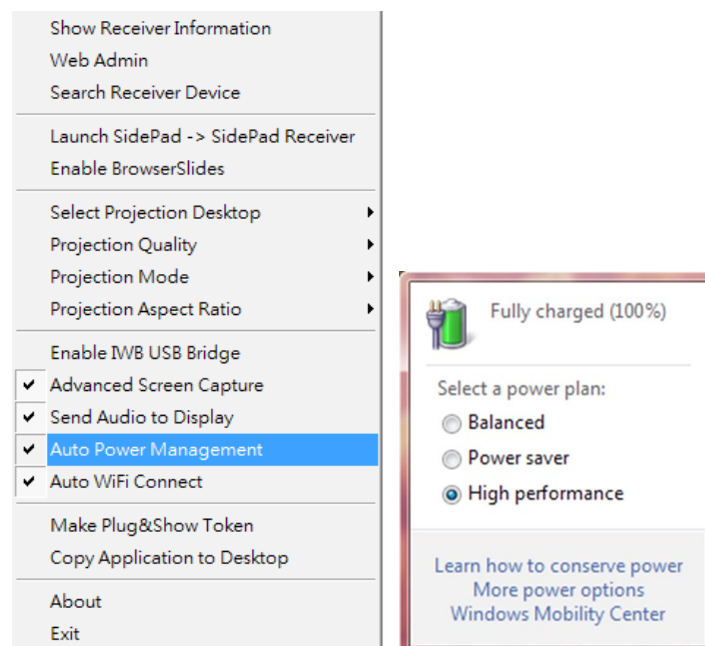
1. Click “Send Audio to Display” to start the audio projection feature. It will mute your local speaker during the projection and restore it when it closes the application.

**Note:** For Windows XP system, you have to install the Audio driver. (VAC.exe) You can find the driver from USB token.



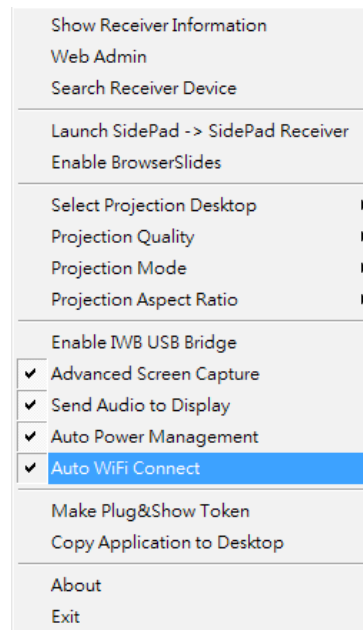
### 8.10.13 Auto Power Manager

1. To make the highest projection performance, application will turn the PC's windows power scheme from current settings to “highest performance”, however, you can click the “Auto Power Manage” to enable or disable this function and restore you power scheme immediately.



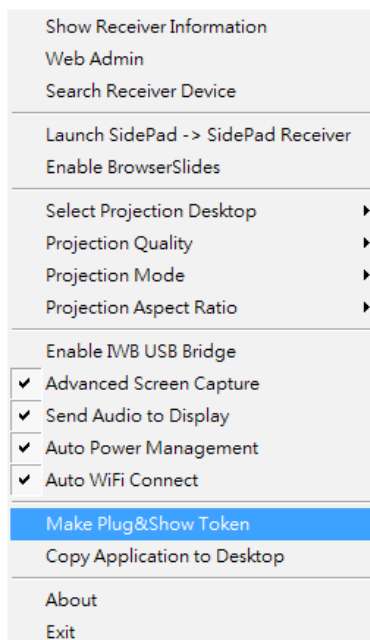
### 8.10.14 Auto WiFi Connect

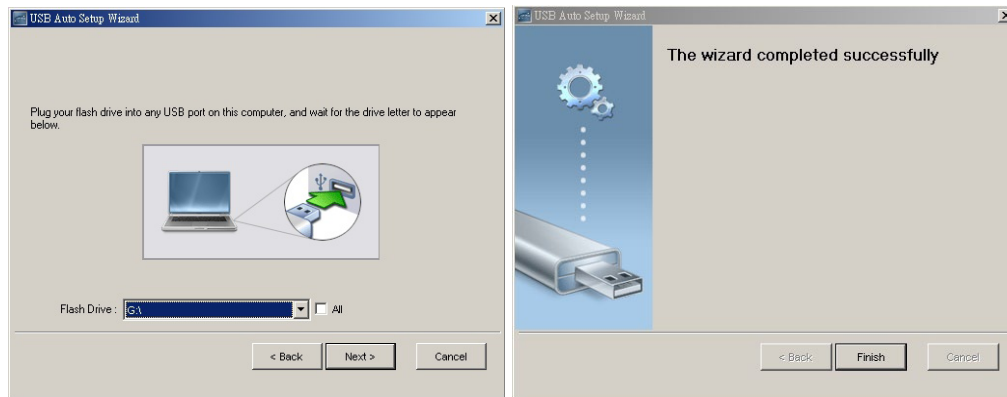
1. Click “Auto WiFi Connect” to enable the WiFi connect feature through WiPG-1000 application.



### 8.10.15 Make wePresent WiPG-1000 Token

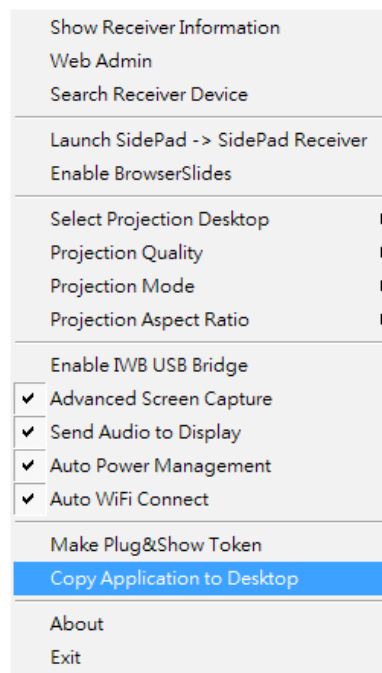
1. Click “Make wePresent WiPG-1000 Token” to make a USB wePresent WiPG-1000 Token, you can insert a USB thumb drive and follows the wizard to make the Token.





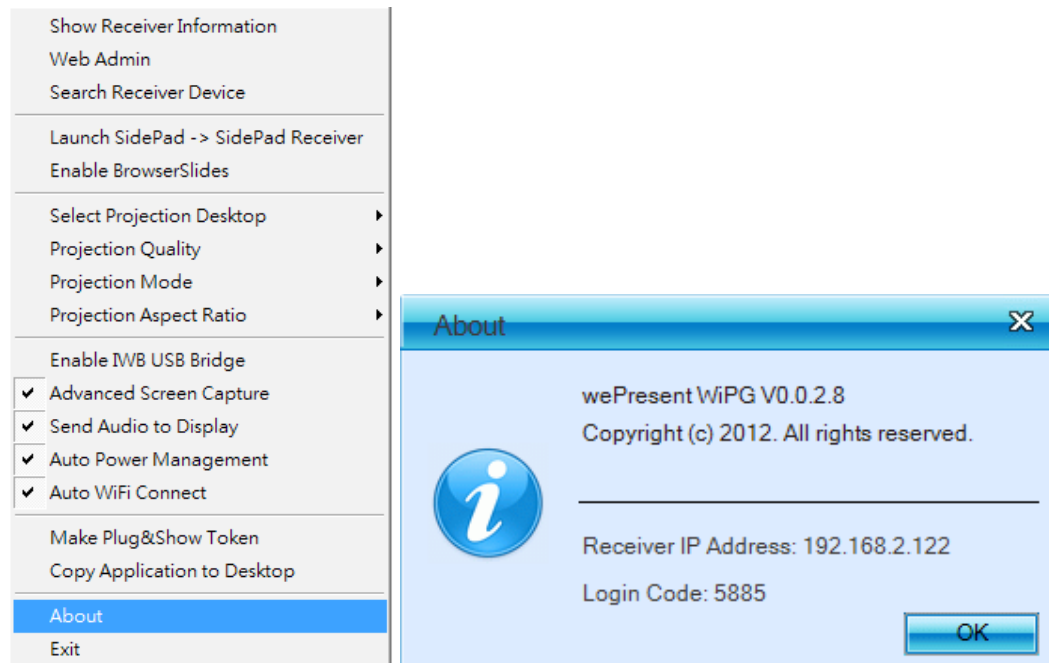
### 8.10.16 Copy Application to desktop

1. Click the “Copy Application to desktop”, it will copy the application to your desktop immediately even you don’t have the system privilege



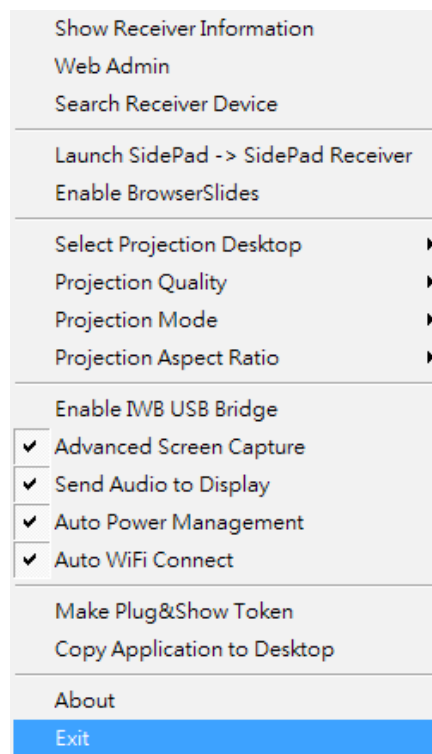
### 8.10.17 About

1. Click “About” to show system information. It includes product model name, Client version, IP address and other information.



### 8.10.18 Exit

1. Click “Exit” to exit this application. It will stop current playing status and close the application immediate.

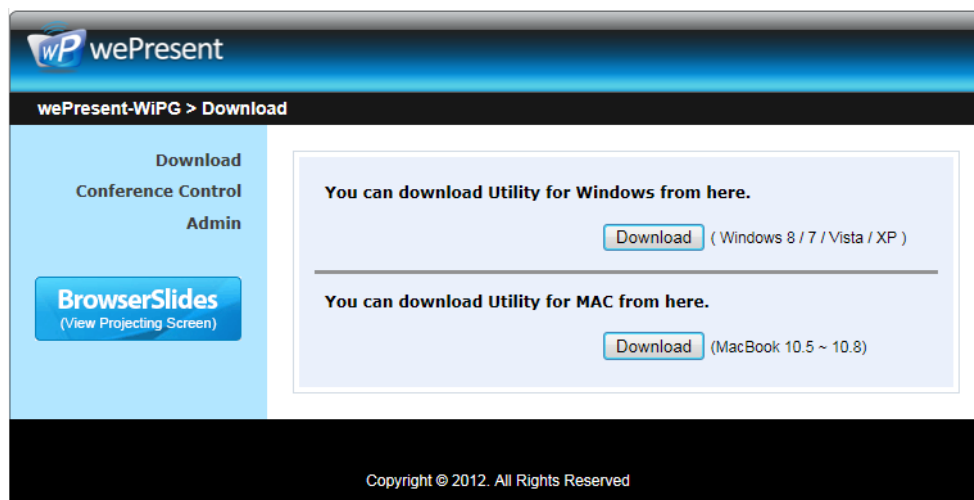




## 9. DoWiFi for Mac

### 9.1 Install the application

1. Make sure your PC WiFi is enabled already, and connect your PC to wePresent WiPG-1000 box through WiFi.
2. Open your browser and enter the IP address or enter the Device Name (SSID) shown on the left corner of projector screen to access the wePresent WiPG-1000 web home page. (Default IP: 192.168.100.10, Default Device Name(SSID):WiPG-1000)
3. Download the client software for “Mac” and install on your PC.



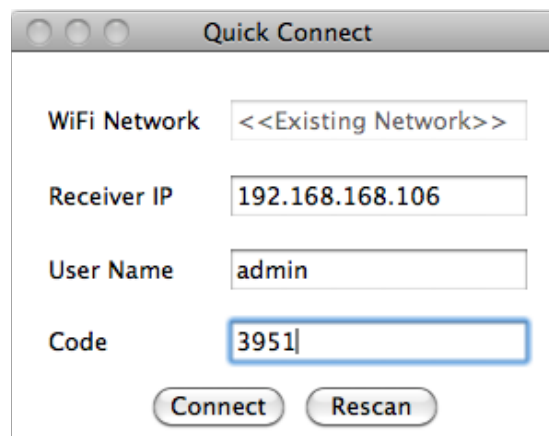
4. Launch WiPG-1000 client and connect to WiPG-1000 receiver.

### 9.2 Start the application

1. Click wePresent WiPG-1000 from Application folder to execute the application.
2. It will start to search wePresent WiPG-1000 receiver automatically.

### 9.3 Quick Connect

1. WiPG-1000 will memorize the last successful connection profile and open the quick connect dialog, you can enter the code and press the “Connect” button to connect this WiPG-1000 directly.



2. If you want to connect to another WiPG-1000 receiver, please press the “Rescan” button.

→Back

## 9.4 Connect to WiFi Network

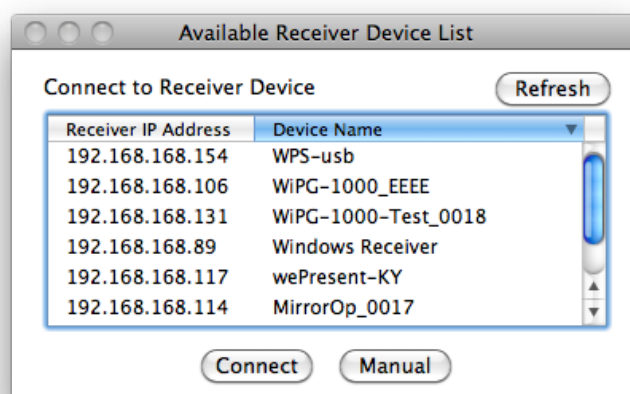
1. WiPG-1000 will search the available WiFi Network and list the WiPG-1000 WiFi Device. You can select a network and press the “Connect” button to connect the selected WiFi Device.



2. You can press the “Refresh” button to search again.
3. If you don’t like to change the WiFi Network and keep the connection to current network, you can press the “Skip” button.

## 9.5 Connect to Receiver Device

1. WiPG-1000 will search and list the WiPG-1000 receiver Device. You can select the target receiver device and press the “Connect” button to connect the selected receiver device.

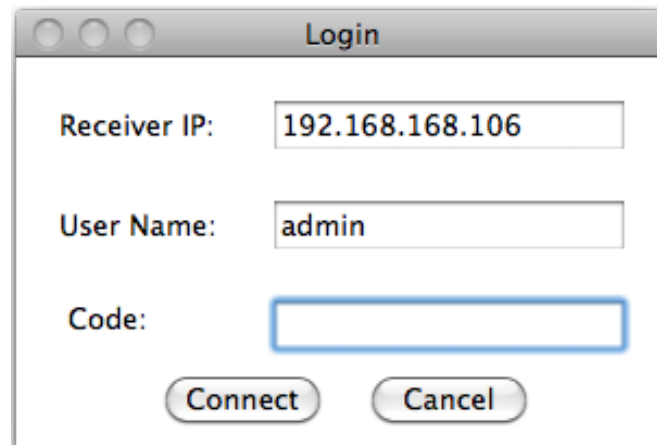


2. You can press the “Refresh” button to search again.
3. If you can’t find the target receiver device from the list, you can press the “Manual” button to enter the receiver IP address manually and connect.

## 9.6 Login

1. When it connects to a “Code” protection enabled WiPG-1000 receiver, you have to enter the “Code” and press the “Connect” button to login the receiver.

(You can find the CODE from the right-upper of OSD standby screen)



A login dialog box titled "Login" with three input fields: "Receiver IP:" containing "192.168.168.106", "User Name:" containing "admin", and "Code:" which is empty. Below the fields are two buttons: "Connect" and "Cancel".

2. If you want to connect to another receiver or cancel the login, please press the “Cancel” button.

## 9.7 Main User Interface



## 9.8 Screen Projection

1. Click the “Play” button for full or split screen, you can project the main screen on to the display immediately, click the “Pause” button, you can freeze you projection screen, and click the “Stop” button to stop projecting your screen.



Button	Description
	Full Screen projection
	Project to Split #1
	Project to Split #2
	Project to Split #3
	Project to Split #4
	Stop projecting
	Pause projecting
	Enable the Mac Magnifier function

## 9.9 Audio Projection

1. When you are doing the full screen projection, you can also choose to project the audio to WiPG-1000 receiver for the multimedia or video scenario.
2. To enable or disable the audio projection feature, please change the setting from WiPG-1000 menu. (Menu -> Send audio to display)

**Note:** Please install the SoundFlower on your computer first, you can find the software from USB Token.

## 9.10 Menu

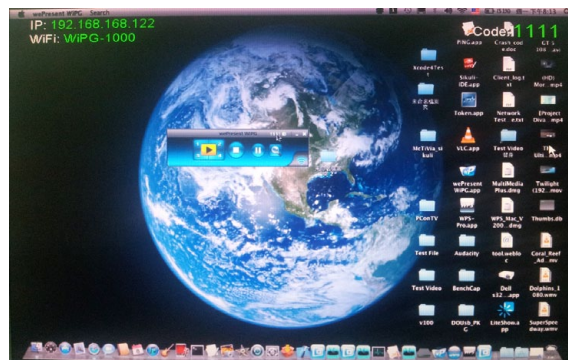
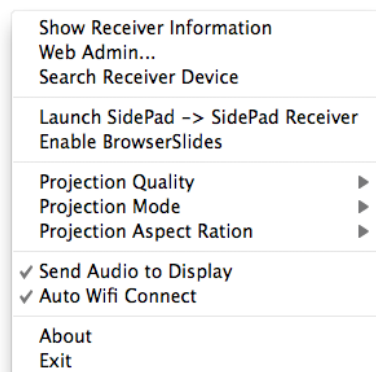
1. Press “Menu” button from the main UI, you will find the menu to enable the additional feature or to change the application options.



Item	Description
Show Receiver Information	Show Receiver Information on desktop
Web Admin	Open web admin page
Search Receiver	Search another receiver device
Launch SidePad -> SidePad Receiver	Launch SidePad sender
Enable BrowserSlides	Enable BrowserSlides feature
Projection Quality	Change projection quality
Projection Mode	Change projection latency option
Projection Aspect Ratio	Change projection screen ratio
Send Audio to Display	Enable audio projection
Auto WiFi Connect	Enable Auto WiFi connect feature
About	About this application
Exit	Exit the application

### 9.10.1 Show Receiver Information

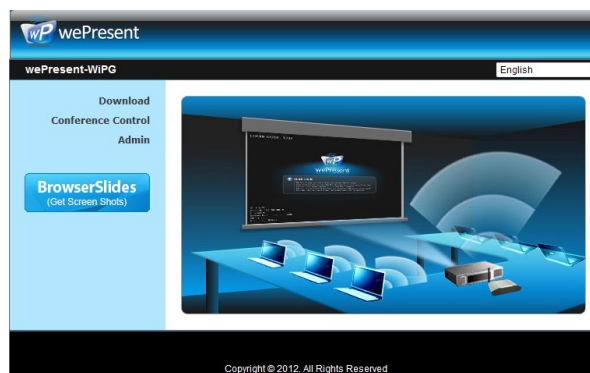
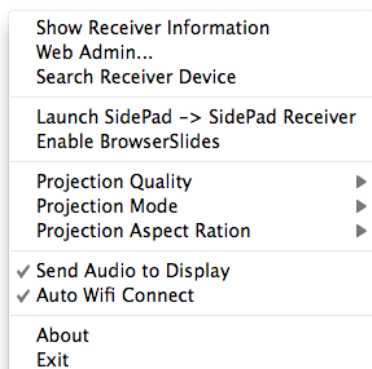
1. Click “Show Receiver Information”, it will display the Receiver Information on the projecting screen, including WiFi Name, IP Address and Code, then close automatically after 30 seconds.



### 9.10.2 Web Admin

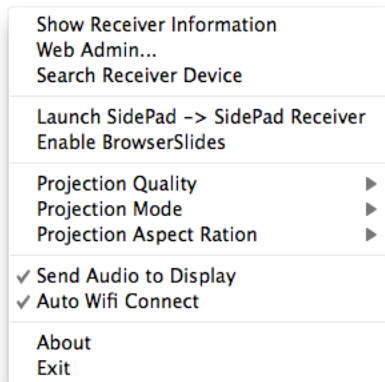
1. Click “Web Admin”, it will open the browser and connect to the receiver web admin page automatically.

(You can find the details of web admin page from another chapter.)



### 9.10.3 Search Receiver Device

1. Click “Search Receiver Device”, it will disconnect from current receiver and search the receiver again.

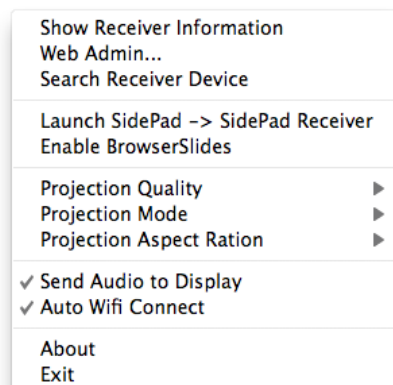


### 9.10.4 Launch SidePad -> SidePad Receiver

1. Open the main menu of the WiPG-1000 application(Win/Mac), and choose the item, “Launch SidePad -> SidePad Receiver”

**Note: You have to download the “SidePad receiver” on your Android/iOS device, then connect the Android/iOS to WiPG-1000 device through WiFi and Launch “SidePad Receiver”.**

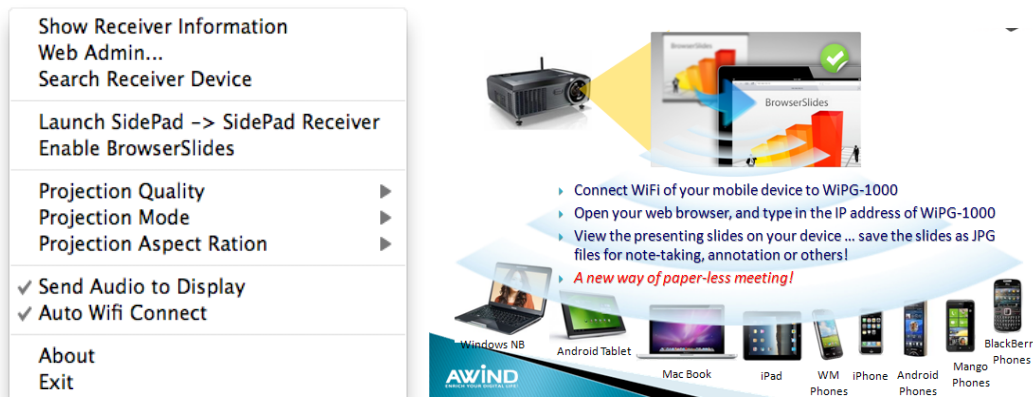
2. In seconds, you shall see the PC desktop shown on the iOS Device. Use two fingers to pinch or one finger to pan the desktop image and control it by single or double clicks!



### 9.10.5 Enable BrowserSlides

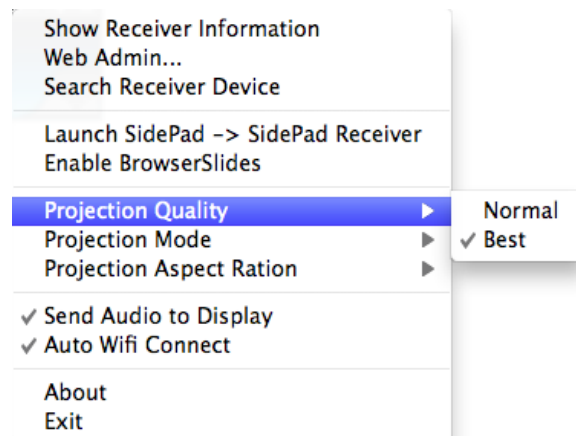
1. Click the “Enable BrowserSlides”, it will start to broadcast your slides to the browser on connected mobile devices.

**Note:** Audience need to connect to WiPG-1000 WiFi Network, open the browser and click the “BrowserSlides” button to start receiving the slides.



### 9.10.6 Projection Quality

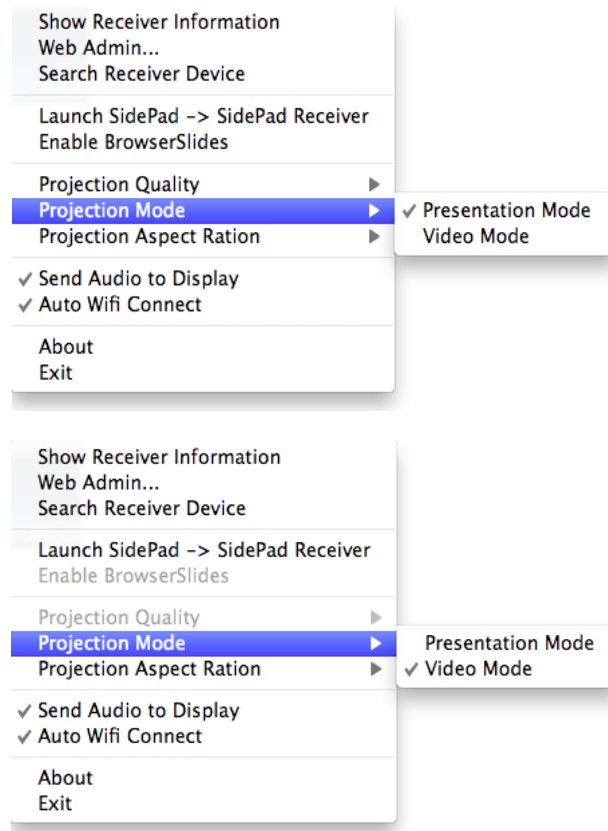
1. Click the “Projection Quality”, choose “Normal” for faster projection speed with lower screen image quality, and “Best” for clear screen image quality but slower projection speed.





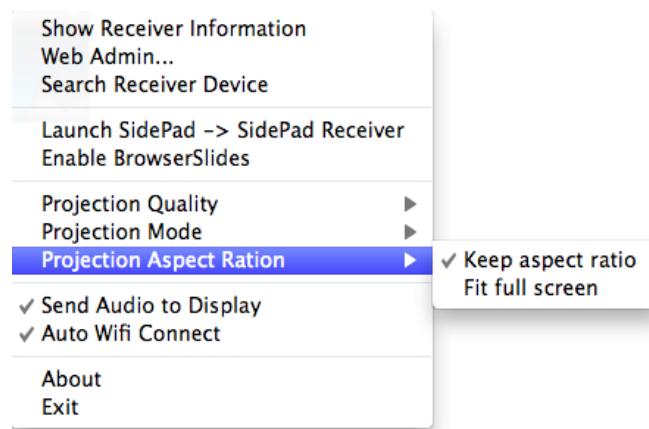
### 9.10.7 Projection Mode

1. The Projection Mode provides the option to support “Video Mode” latency control and “Presentation Mode”.
2. For the “Video Mode”, it will trigger the longer latency but much smooth performance when you are watching video, meanwhile it will change PC resolution to 1024x768 and gray some option.
3. For the “Presentation Mode”, it will always keep the shortest latency to provide the most responsive operation performance.



### 9.10.8 Projection Aspect Ratio

1. It can provide the projection screen ratio setting of “Keep Aspect Ratio” and “Fit Full Screen”.





### 9.10.9 Send Audio to Display

1. Click “Send Audio to Display” to start the audio projection feature. It will mute your local speaker during the projection and restore it when it closes the application.

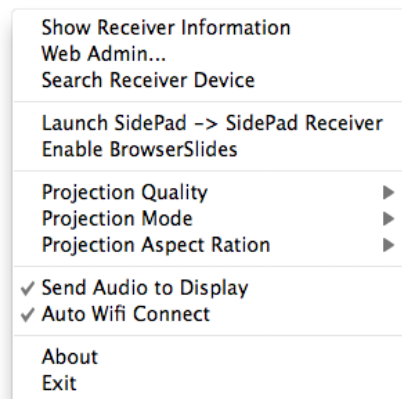
**Note:** You have to install the SoundFlower Audio driver. You can find the driver from USB token.

### 9.10.10 Auto WiFi Connect

1. Click “Auto WiFi Connect” to enable the WiFi connect feature through WiPG-1000 application.

### 9.10.11 About

1. Click “About” to show system information. It includes product model name, Client version and other information.



### 9.10.12 Exit

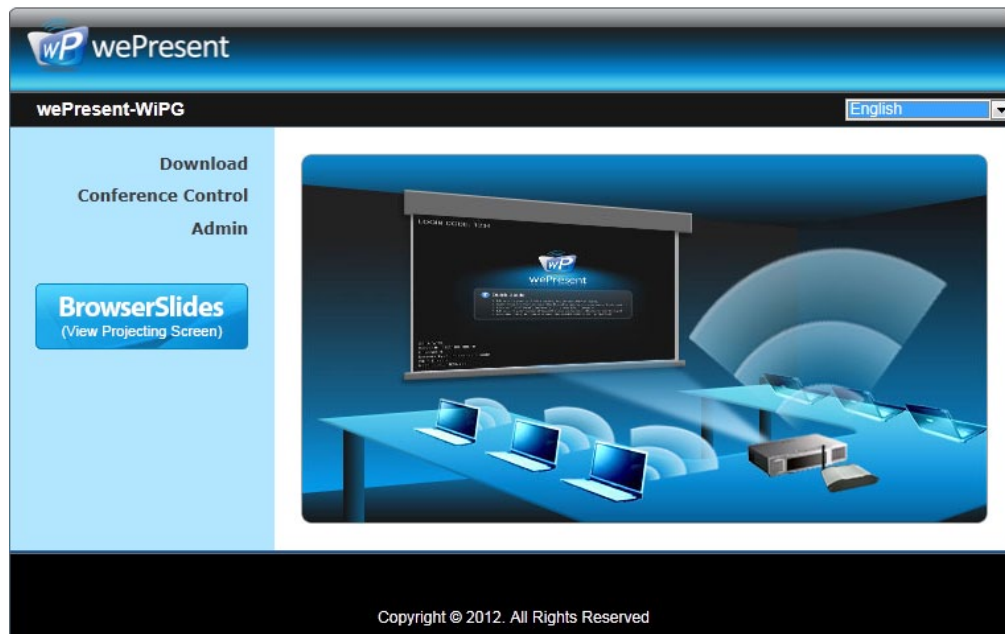
1. Click “Exit” to exit this application. It will stop current playing status and close the application immediate.

## 10. Web Management

### 10.1 Home Page

1. Make sure your PC connect to wePresent WiPG-1000 box successfully.
2. Enter the receiver IP address or Device Name (SSID) on browser; you can find the IP address and SSID on the projector screen.

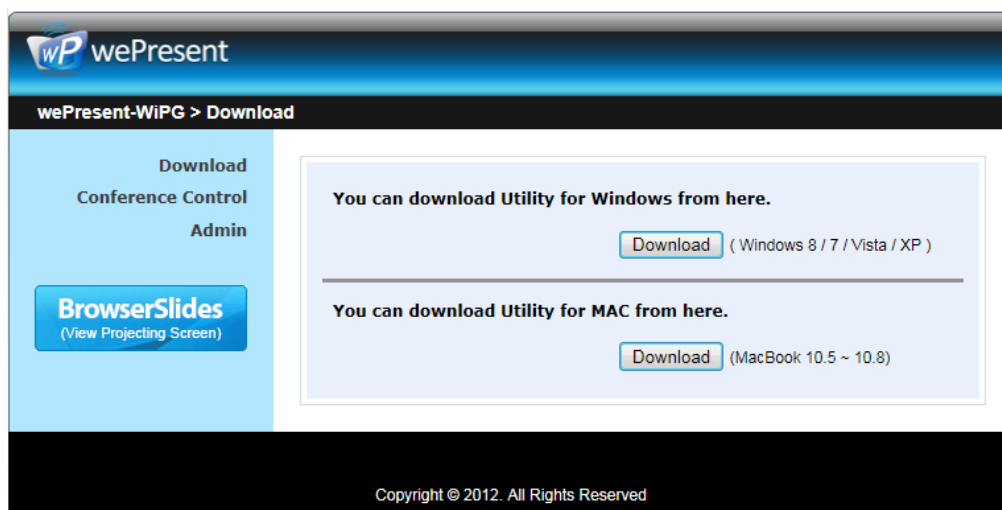
(Default IP is 192.168.100.10, Default Device name (SSID) is WiPG-1000)



### 10.2 Download

1. Select “Download” function.
2. Please select the “Win 8/ Win 7 / Windows Vista / XP” or “Mac Utility” and execute the installation program.







**Note:** Please disable the “Smart Screen Filter” on IE browser; otherwise you might not able to download the file.

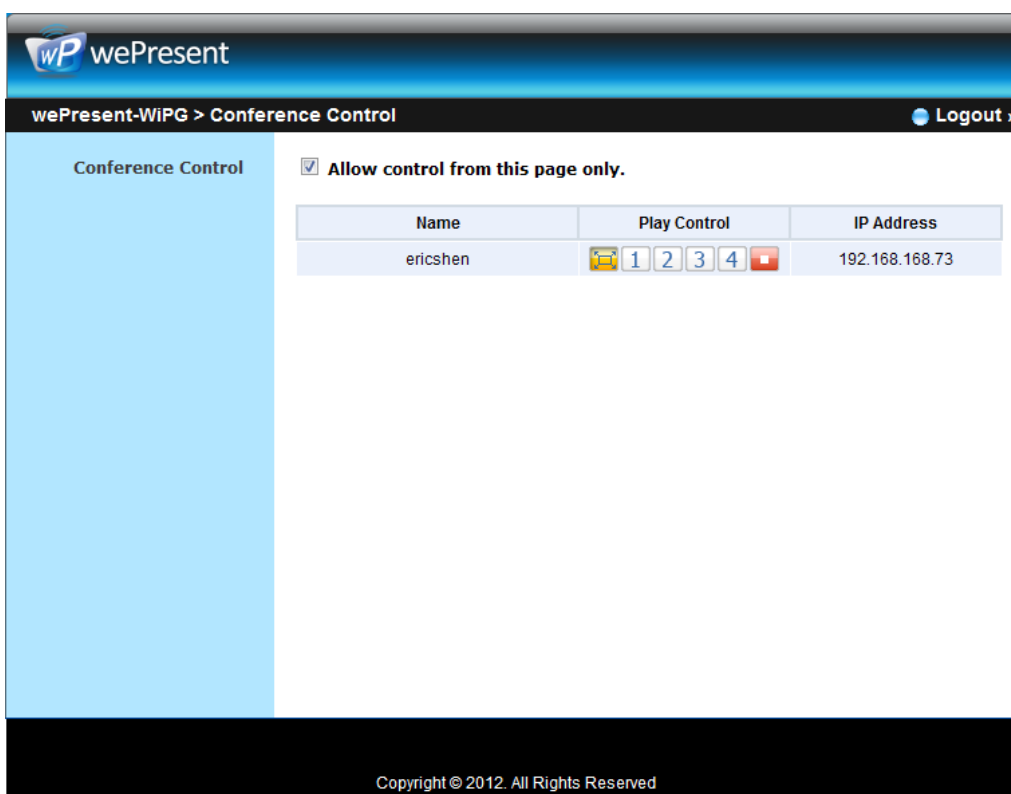


## 10.3 Conference Control

1. Select “Conference Control” function, it will show current connected sender list.
2. Enter password and then press [Login]. (default password: moderator)

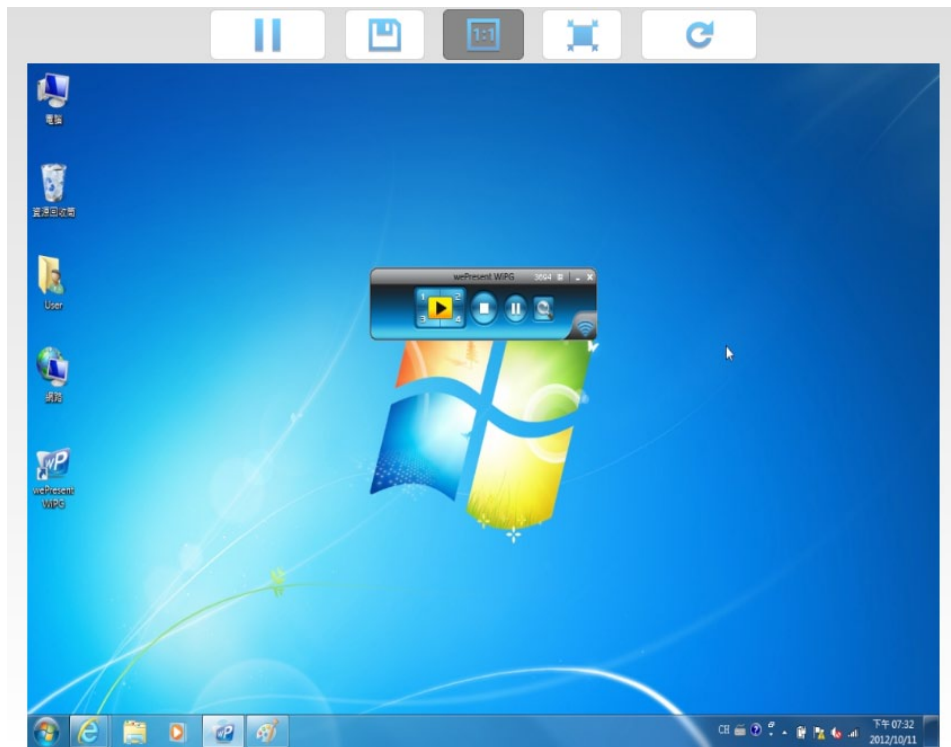


3. After login, you can see a User List on the screen which indicates all of users connected to WEPRESENT WiPG-1000 box.
4. There are three columns, “Computer Name”, “Play Control” and “IP Address”.
5. Play Control, There are six buttons, including Play(Full)  , Play Split #1  , Play Split #2  , Play Split #3  , Play Split #4  and Stop  .
6. Uncheck the “Allow Control from this page only”, it will disable the centralized control and user can project the screen to WiPG-1000 freely.



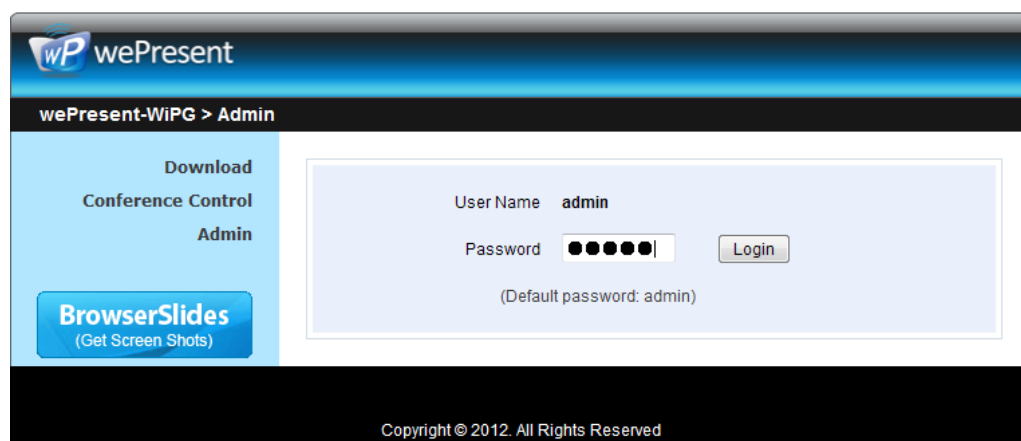
## 10.4 BrowserSlides

1. Press the “BrowserSlides” button to enter the BrowserSlides page.
2. Enter the password if necessary. (Please refer to 10.5.8 BrowserSlides setting to configure the password.)
3. Start to receive the projecting slides.



## 10.5 Admin

1. Click [Admin] and then enter the password to login web admin page. (Default Password: admin)



### 10.5.1 System Status

1. Click [System Status], it will show current system status.

**Model Name:** Product model name

**Versions:**

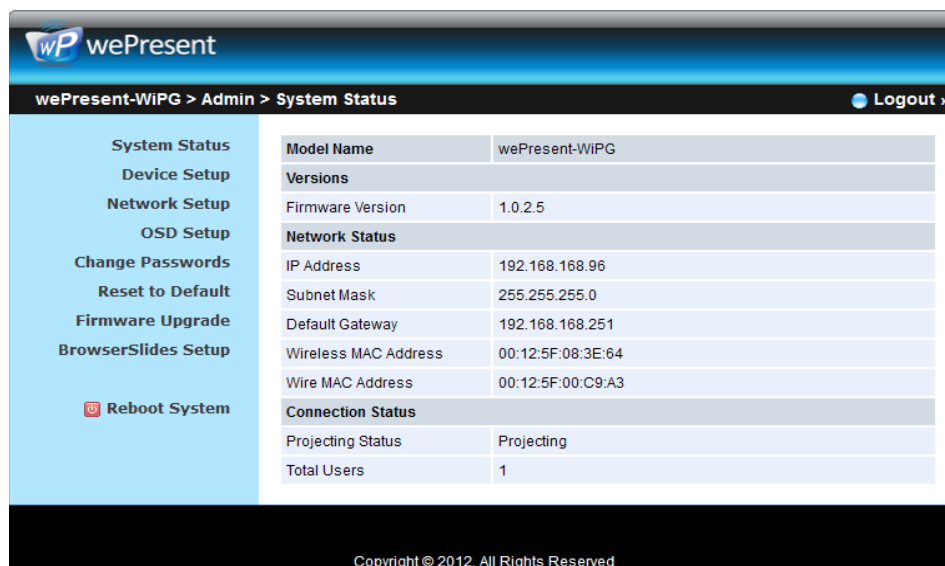
- **Firmware version no.:** Product firmware version number.

**Network Status:**

- **IP address:** IP address of WiPG-1000 device.
- **Subnet Mask:** subnet mask
- **Default Gateway:** default gateway
- **Wireless MAC address:** wireless MAC address
- **Wire MAC address:** wire MAC address

**Connection Status:**

- **Projecting status:** “Waiting for projecting” or “Projecting”
- **Total Users:** It shows how many users login to wePresent WiPG-1000.



wePresent-WiPG > Admin > System Status		Logout »
<b>System Status</b>	Model Name: wePresent-WiPG	
<b>Device Setup</b>	Versions	
<b>Network Setup</b>	Firmware Version: 1.0.2.5	
<b>OSD Setup</b>	Network Status	
<b>Change Passwords</b>	IP Address: 192.168.168.96	
<b>Reset to Default</b>	Subnet Mask: 255.255.255.0	
<b>Firmware Upgrade</b>	Default Gateway: 192.168.168.251	
<b>BrowserSlides Setup</b>	Wireless MAC Address: 00:12:5F:08:3E:64	
<b>Reboot System</b>	Wire MAC Address: 00:12:5F:00:C9:A3	
	Connection Status	
	Projecting Status: Projecting	
	Total Users: 1	

Copyright © 2012. All Rights Reserved

### 10.5.2 Device Setup

1. Click [Device Setup] button, it will show the device setting items,

- Choose **<VGA>** or **<HDMI>** output option
- **<Resolution>:**
  - HDMI:** 720p, 1080i, 1080p
  - **VGA:** UXGA(1600\*1200), WXGA+(1440\*900), WXGA(1360\*768, 1280x768, 1280x800), XGA(1024\*768), and SVGA(800\*600). The default value is XGA(1024\*768).
- **<Code>:** You can select “Disable”, “Random”, or “Use the following code” to set a specified 4-characters Number.

- **<IWB USB Port>**: You can configure the IWB USB port to support “IWB (HID)” device or “Mouse/Keyboard” device
- **<Apply>**: Confirmation and Save modifications
- **<Cancel>**: Cancel all the modifications

### 10.5.3 Network Setup

1. Click [Network Setup] button, it will show the network setting items,

#### <Note: Auto-Configuration Network Setup on WiPG-1000>

The default setting of the wePresent WiPG-1000 box is DHCP client. When the wePresent WiPG-1000 box is connected to a LAN that already has a DHCP server present, the wePresent WiPG-1000 box takes an IP address assigned to it by the server. When the wePresent WiPG-1000 box is connected to a LAN that does not have a DHCP server, the wePresent WiPG-1000 box becomes the DHCP server in the network.

#### < IP Setup>

- You can select “obtain IP address automatically” or “Use the following IP address”
- IP Address: The default value is 192.168.100.10.
- Subnet Mask: The default value is 255.255.255.0
- Default Gateway: The default value is 192.168.100.10
- DNS Server: The default value is 192.168.100.10

#### <DHCP Server Setup>

- You can select “auto(Enable/Disable DHCP Server” or “Disable”)
- Start IP: The start IP address of DHCP Server.
- End IP: The end IP address of DHCP Server
- Subnet Mask: The default value is 255.255.255.0
- Default Gateway: The default value is 192.168.100.10
- DNS Server: The default value is 192.168.100.10

**< Wireless Setup>**

- Wireless LAN: The default value is "Enable"
- Region: default value is "Worldwide".
- SSID: SSID string, max. Length is 32 bytes.
- SSID Broadcast: The default value is "Enable"
- Channel: to set fixed channel or Auto. The "Auto" means after power on wePresent WiPG-1000, it will scan all of wireless channel and select clear one channel automatically.
- Encryption: you can select "Disable" or one of WEP/WPA/WPA2 64bit or 128bit in ASCII or HEX string.
- Key: If Encryption is enabled, you have to set key value according to the encryption mode you selected.
- Channel Bandwidth: 20MHz or Auto (20MHz/40MHz)

**<SNMP>**

You can select "Enable" or "Disable" option to set up the SNMP function. And the SNMP community password is the same as the web Admin password.

**< AP Client>**

- Connect to Existing AP: Input the SSID of Home WiFi AP you want to connect.
- Encryption: you can select "Disable" or one of WEP/WPA/WPA2 64bit or 128bit in ASCII or HEX string.
- Key: If Encryption is enabled, you have to set key value according to the encryption mode you selected.
- Press Apply button, and follow the reboot instruction to make it work.

**< Gatekeeper>**


Gatekeeper is designed for ensuring the enterprise network security within wePresent WiPG-1000 box

- All Block can block Guest Users (through wireless) to access all office network (LAN),
- All Allow can pass Guest Users (through wireless) to access all office network
- Internet Only can block Guest Users (through wireless) from office network (LAN) but still reserve internet connection capability.


**< Apply >**: press button to select this mode.

**< Cancel>**: press button to abort action.

**< Back>**: Back to Operating mode main menu.


**wePresent**

wePresent-WiPG > Admin > Network Setup
Logout »

System Status  
Device Setup  
**Network Setup**  
OSD Setup  
Change Passwords  
Reset to Default  
Firmware Upgrade  
BrowserSlides Setup  
  
 Reboot System

IP Setup	<input checked="" type="radio"/> Obtain an IP address automatically <input type="radio"/> Use the following IP address	
	IP Address	<input type="text" value="192"/> <input type="text" value="168"/> <input type="text" value="100"/> <input type="text" value="10"/>
	Subnet Mask	<input type="text" value="255"/> <input type="text" value="255"/> <input type="text" value="255"/> <input type="text" value="0"/>
	Default Gateway	<input type="text" value="192"/> <input type="text" value="168"/> <input type="text" value="100"/> <input type="text" value="10"/>
	DNS Server	<input type="text" value="192"/> <input type="text" value="168"/> <input type="text" value="100"/> <input type="text" value="10"/>
DHCP Server Setup	<input checked="" type="radio"/> Auto <input type="radio"/> Disable	
	Start IP	<input type="text" value="192"/> <input type="text" value="168"/> <input type="text" value="100"/> <input type="text" value="11"/>
	End IP	<input type="text" value="192"/> <input type="text" value="168"/> <input type="text" value="100"/> <input type="text" value="254"/>
	Subnet Mask	<input type="text" value="255"/> <input type="text" value="255"/> <input type="text" value="255"/> <input type="text" value="0"/>
	Default Gateway	<input type="text" value="192"/> <input type="text" value="168"/> <input type="text" value="100"/> <input type="text" value="10"/>
	DNS Server	<input type="text" value="192"/> <input type="text" value="168"/> <input type="text" value="100"/> <input type="text" value="10"/>
Wireless Setup	Wireless LAN <input checked="" type="radio"/> Enable <input type="radio"/> Disable	Embedded AP SSID/ NAME <input type="text" value="WiPG-1000"/>
	Region	WORLDWIDE
	SSID Broadcast	<input checked="" type="radio"/> Enable <input type="radio"/> Disable
	Channel	Auto
	Encryption	Disable
	Key	<input type="text"/> <input checked="" type="checkbox"/> Hide characters
	Channel Bandwidth	<input type="radio"/> 20MHz <input checked="" type="radio"/> Auto
Ap Client	Connect to Existing AP <input type="radio"/> Enable <input checked="" type="radio"/> Disable	Existing AP SSID <input type="text"/> <input type="button" value="Scan"/>
	Encryption	Disable
	Key	<input type="text"/> <input checked="" type="checkbox"/> Hide characters
GateKeeper	<input checked="" type="radio"/> All Pass <input type="radio"/> All Block <input type="radio"/> Internet Only	
SNMP	<input checked="" type="radio"/> Enable <input type="radio"/> Disable	
<input type="button" value="Apply"/> <input type="button" value="Cancel"/>		

Copyright © 2012. All Rights Reserved

## 10.5.4 OSD Setup

1. Click [OSD Setup] button, you can change the standby Logo image

### Change Logo Image

- **<Reset to default>**: Restore to default Logo image.
- **<Image File Upload>**: Upload the customized Logo Image.

2. Display Option

→Back



## Device Information

Show All: Display SSID, IP address and Code information.

Hide All: Hide SSID, IP address and Code information.

## Font Size

Normal: Normal SSID, IP address and Code font size.

Large: Make SSID, IP address and Code font size bigger.

## Screen Saver Settings

Enable: Enable the screen saver function.

Disable: Disable the screen saver function.

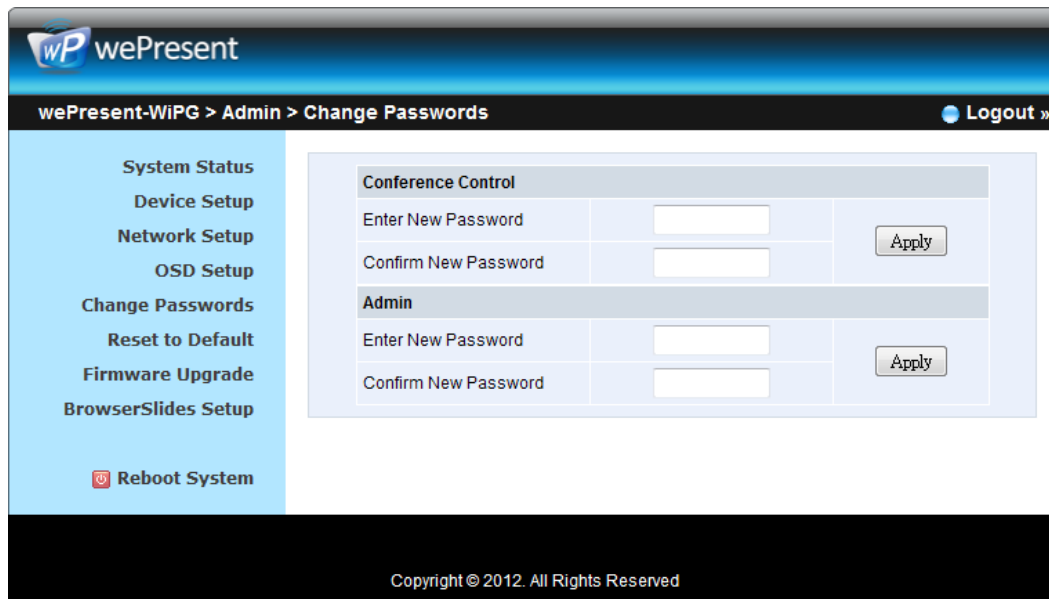
Idle Time(Minutes): Choose “5”, “10”, “15”, “30” and “60” minutes idle time to start the Screen Saver function. (Default is 5 minutes.)

## 10.5.5 Change Passwords

1. Click [Change Password] button, you can change the password setting.

(Length: up to 8 characters)

- **<Enter New Password>**: enter new password you want to change for each category.
- **<Confirm New Password>**: Confirm the new password again.
- **<Apply>**: Confirm and Save modifications.



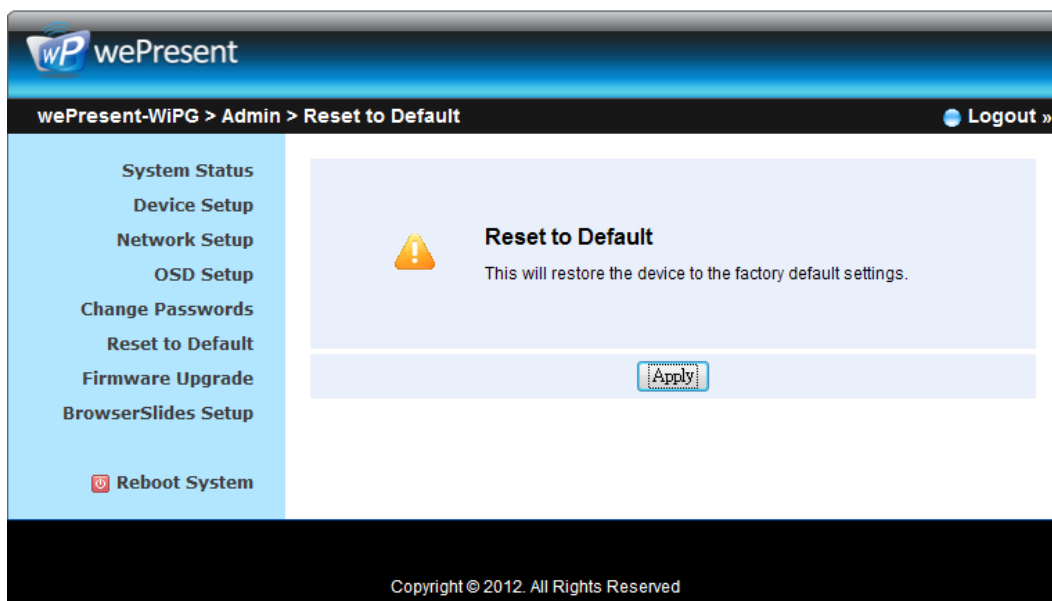
### 10.5.6 Reset to Default

1. Click [Reset to Default] button to restore factory default settings.

**<Apply>**: Confirm and take action.

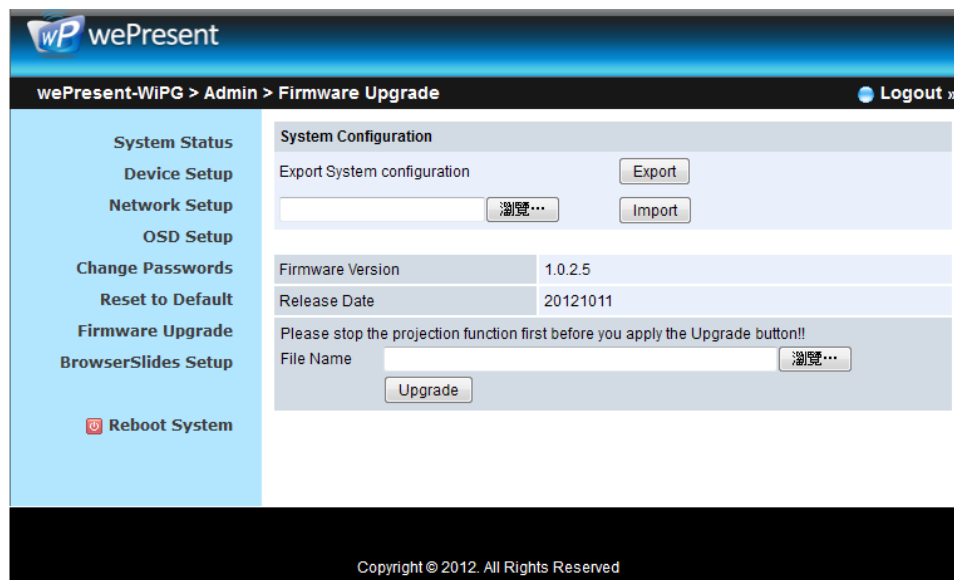
**\*\*\* To execute the Hardware Factory Reset to Default, Please follow below procedures.**

1. Press **[Reset]** button and **Hold**.
2. Turn on wePresent WiPG-1000 box.
3. Wait for over 10 seconds and relief **[Reset]** button.
4. It will take effect to restore factory default settings.



## 10.5.7 Firmware Upgrade

1. Click [Firmware Upgrade] button to import/export system configuration and upgrade firmware.
2. System Configuration Import and Export
  - Export:**Export the system configuration to a configuration file
  - Import:**Import the system configuration file to WiPG-1000
3. Firmware Upgrade
  - A. Firstly, you have to get latest firmware image file from your vendor.
  - B. Click <**Browse**> to specify file name you want to upgrade.
  - C. Click <**Upgrade**> to start.
  - D. A warning message shown and count down counter on the screen.
  - E. After a few minutes, a complete message shown on the screen.
  - F. Restart wePresent WiPG-1000 box to take effect.



Please wait while System burns new firmware into your device.

Warning: It needs to take 10~15 minutes to burn the file you transferred into flash memory. **During this period, any interrupt such as shut down or reboot the system will cause system crash!!**

Estimated Time remaining: : 890seconds



**Warning:** Don't power off wePresent WiPG-1000 while firmware upgrade in progress, otherwise will cause your Box doesn't work and have to return device to your vendor for fixing.

→Back

## 10.5.8 BrowserSlides Setup

1. Click [BrowserSlides Setup] button to setup the BrowserSlides Feature.
2. Auto Refresh Interval: choose “Manual Refresh”, “10”, “20”, “30”, “45”, “60” or “90” seconds Refresh Interval.
3. Access Password Control: choose “Disable”, “Use the same password as Code” or “Use the following Code”

wePresent-WiPG > Admin > BrowserSlides Setup Logout »

**System Status**  
**Device Setup**  
**Network Setup**  
**OSD Setup**  
**Change Passwords**  
**Reset to Default**  
**Firmware Upgrade**  
**BrowserSlides Setup**  
 Reboot System

**Auto Refresh Interval (second)**

☒ Manual Refresh  
☐ 10 \*recommended maximum concurrent users. (10)  
☐ 20 \*recommended maximum concurrent users. (15)  
☐ 30 \*recommended maximum concurrent users. (20)  
☐ 45 \*recommended maximum concurrent users. (25)  
☐ 60 \*recommended maximum concurrent users. (30)  
☐ 90 \*recommended maximum concurrent users. (35)

**Access Password Control**

☒ Disable  
☐ Use the same password as "Code"  
☐ Use the following Code:  (0-9)

**Note**  
 If there are more than 10 users logged into WiPG-1000, it is recommended to connect WiPG-1000 to company network through Ethernet or bridge WiPG-1000 to a router due to wireless bandwidth concern. User should connect WiPG-1000 via company network or router in order to secure the projection performance.

Apply Cancel

Copyright © 2012. All Rights Reserved

### Note:

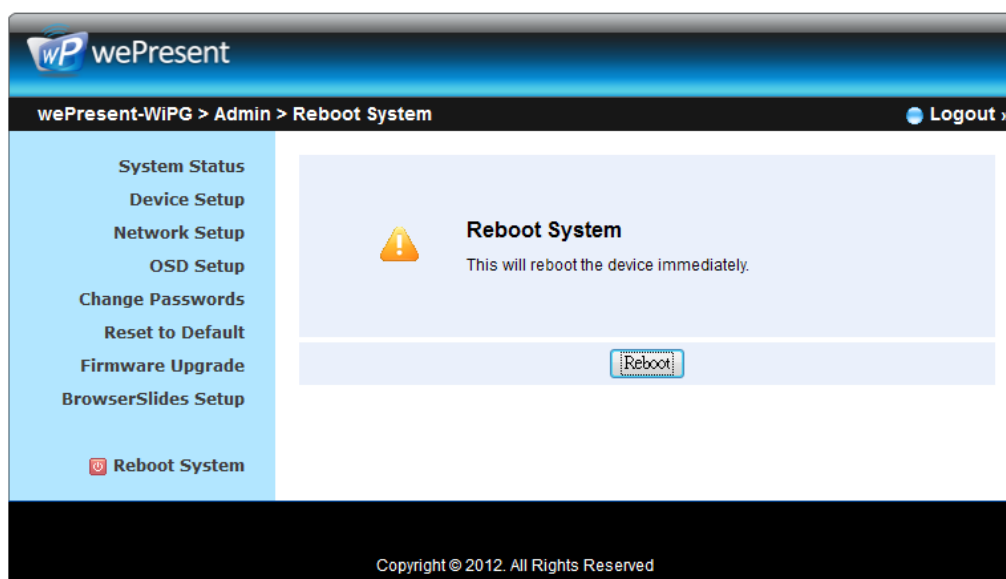
The WiPG-1000 logged-in user is not identical to BrowserSlides user, and they both consume the wireless bandwidth for device connection. If there are more than 10 users logged into WiPG-1000, it is recommended to connect WiPG-1000 to company network through Ethernet or bridge WiPG-1000 to a router due to wireless bandwidth concern. User should connect WiPG-1000 via company network or router in order to secure the projection performance. The BrowserSlides user number should not exceed the recommended number on the web management page to prevent the connection failure or low projection performance.

PS. Wireless Projection function and Conference Control function can support up to 64 users.

## 10.5.9 Reboot System

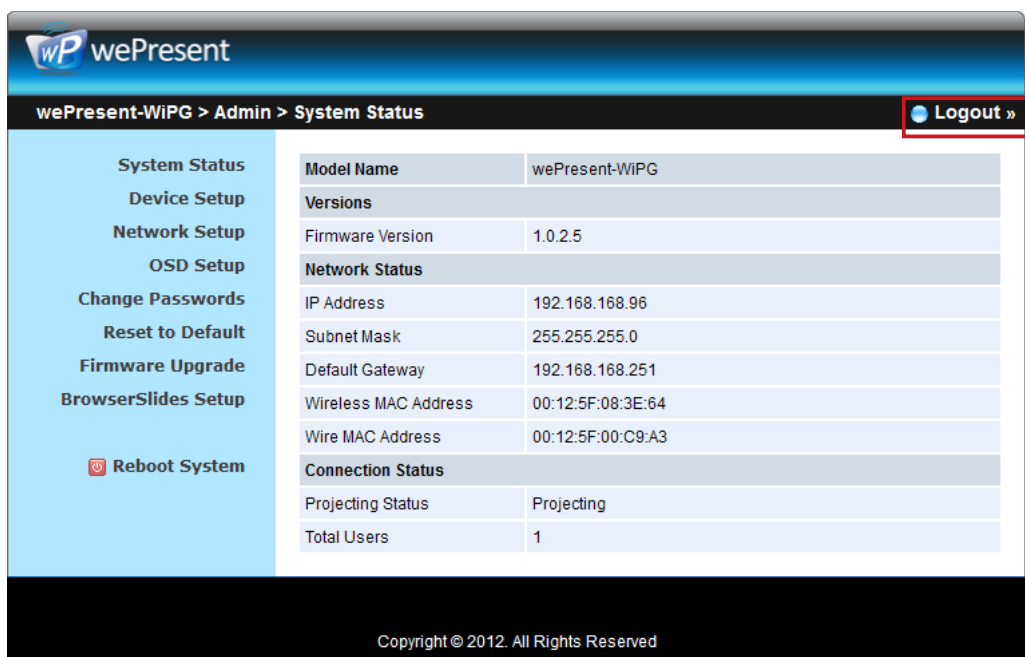
1. Click [Reboot System] button, you can restart the system

- **<Reboot>**: reboot system automatically.



## 10.5.10 Logout

1. Click [Reboot System] button, you can logout the WiPG-1000



## 11. Appendix

### 11.1 Wall-mount Instructions

