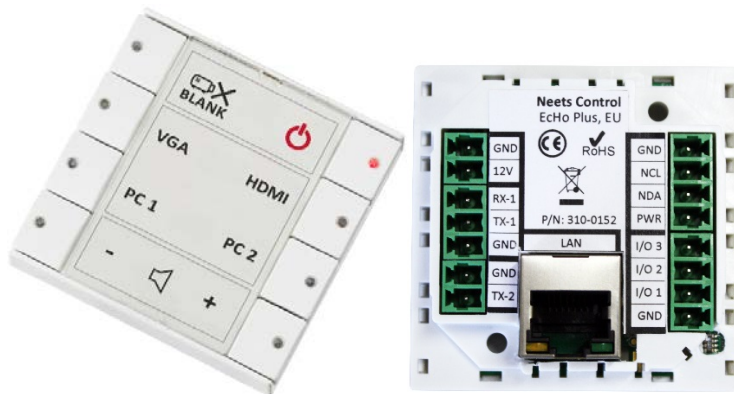


## Neets Control – EcHo Plus

8-Button Keypad with Remote Monitoring



Neets Control – EcHo Plus provides uniform AV control interface in all rooms through an 8-Button Keypad with built-in controller.

For installations with multiple rooms, the included Central Control software makes it possible to monitor rooms with EcHo Plus installed from a central computer.

## Features

### 8-Button AV control system with Remote Monitoring

The world's most compact AV control system – no external processors required

### 8 Freely configurable keypad buttons

Provides uniform AV control interface in all rooms and all 8 buttons can be configured for any function

### 1 Bi-directional RS-232 port

Used for controlling projectors, displays, amplifiers & other AV devices with feedback functionality

### 1 Uni-directional RS-232 or 1 IR port

Used for sending commands to projectors or other AV devices using serial or infrared communication

### 1 Ethernet port

Used for controlling two LAN devices and connection to Central Control and Project Designer

### 3 General Purpose I/O ports

Used for input/output control of relays, switches and sensors

### 1 NEB port (Neets Expansion Bus)

Add 2 additional devices - choose between Keypad, Level Control or Port Expansion (serial and I/O).

### 1 front USB port

Used for easy system configuration, uploading and downloading project files, service and maintenance

### iOS/Android support

Controlled through iOS/Android touch devices – fixed user interface

### Email notifications and warnings

Email notification on lamp/filter hours and warnings

**Included:** Configuration through our free and no-license software: Neets Project Designer

## Neets Control – EcHo Plus

8-Button Keypad with Remote Monitoring

### Neets Central Control features:

#### Remote monitoring

Monitor rooms with EcHo Plus (or Neets Control OsCar/ SieRRa II) installed from one central location.

#### Lamp & Filter hours feedback

Get status on lamp and filter hours for your projectors for preventive maintenance

#### Grouping rooms, floors or levels

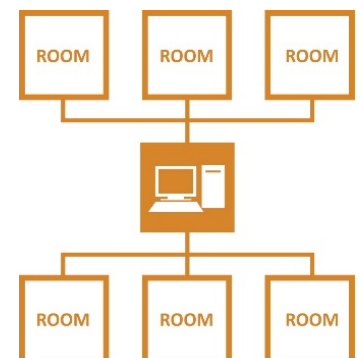
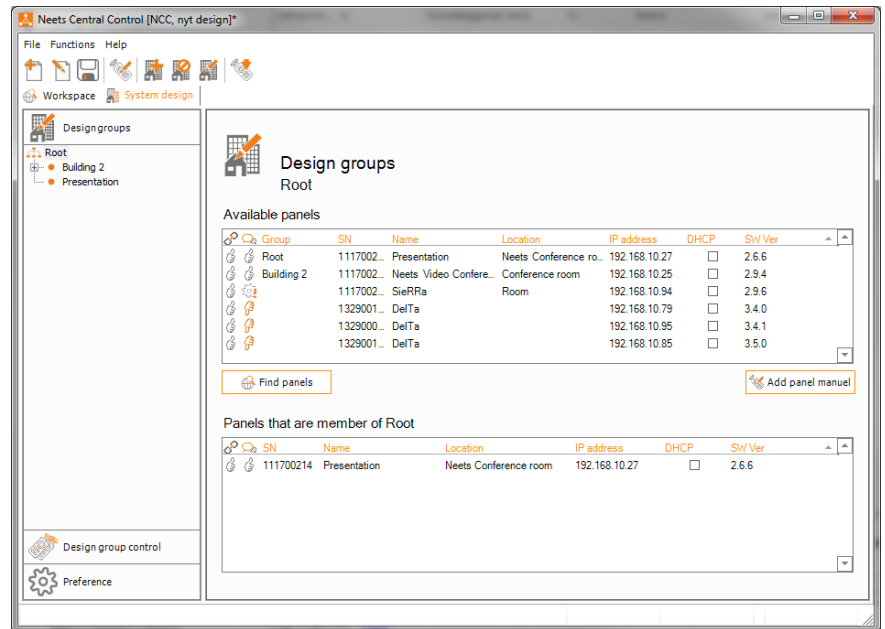
Control groups or individual rooms over network – e.g. one “POWER OFF” command for all rooms

#### Remote AV support

From AV/IT support you can immediately get an overview of a room and test the control commands

#### Software included free-of-charge

Neets Central Control software is a free-of-charge and no-license software



### Technical Specifications

Communication ports:  
1 RS-232 (TX and RX)  
Baud: 1200 – 115200

Data Bit: 7/8  
Parity: None, Even, Odd  
Stop Bit: 1/1.5/2

1 RS-232 or IR (TX only)  
Baud: 1200 – 115200  
Parity: None, even, odd  
Stop Bit: 1/1.5/2

IR:  
Transmit  
381 Hz – 500 kHz  
Devices: 2

1 Ethernet port  
Speed: 10/100 Mbit  
auto-detect  
Devices: 2

3 I/Os (GPIO)  
Input:  
Sense Low: <1 VDC  
Sense High: >4 VDC

Output:  
Type: Open drain  
Max Voltage: 24 VDC  
Max Current: 0.5 A

Neets Expansion Bus (NEB)  
12 V (0.3 A) output  
2 devices

Included in box  
12 V PSU (110- 230V AC)

Dimensions  
(without frame)(EU):  
Width: 55 mm  
Height: 55 mm  
Depth: 17 mm

Dimensions  
(without frame)(DK):  
Width: 72 mm  
Height: 45 mm  
Depth: 17 mm

Weight:  
90 g

Conformity:  
Approval: CE  
EN 55022  
EN 55024

Product item numbers:  
310-0252:  
Neets Control – EcHo Plus,  
DK - Polar white

310-0152:  
Neets Control – EcHo Plus,  
EU - Polar white